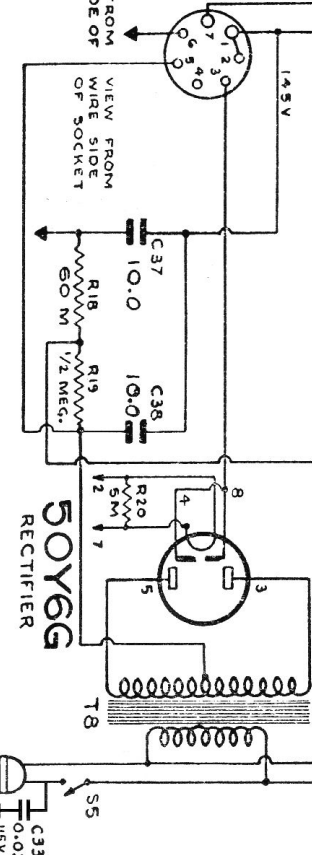
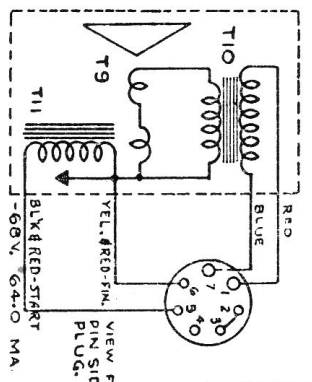


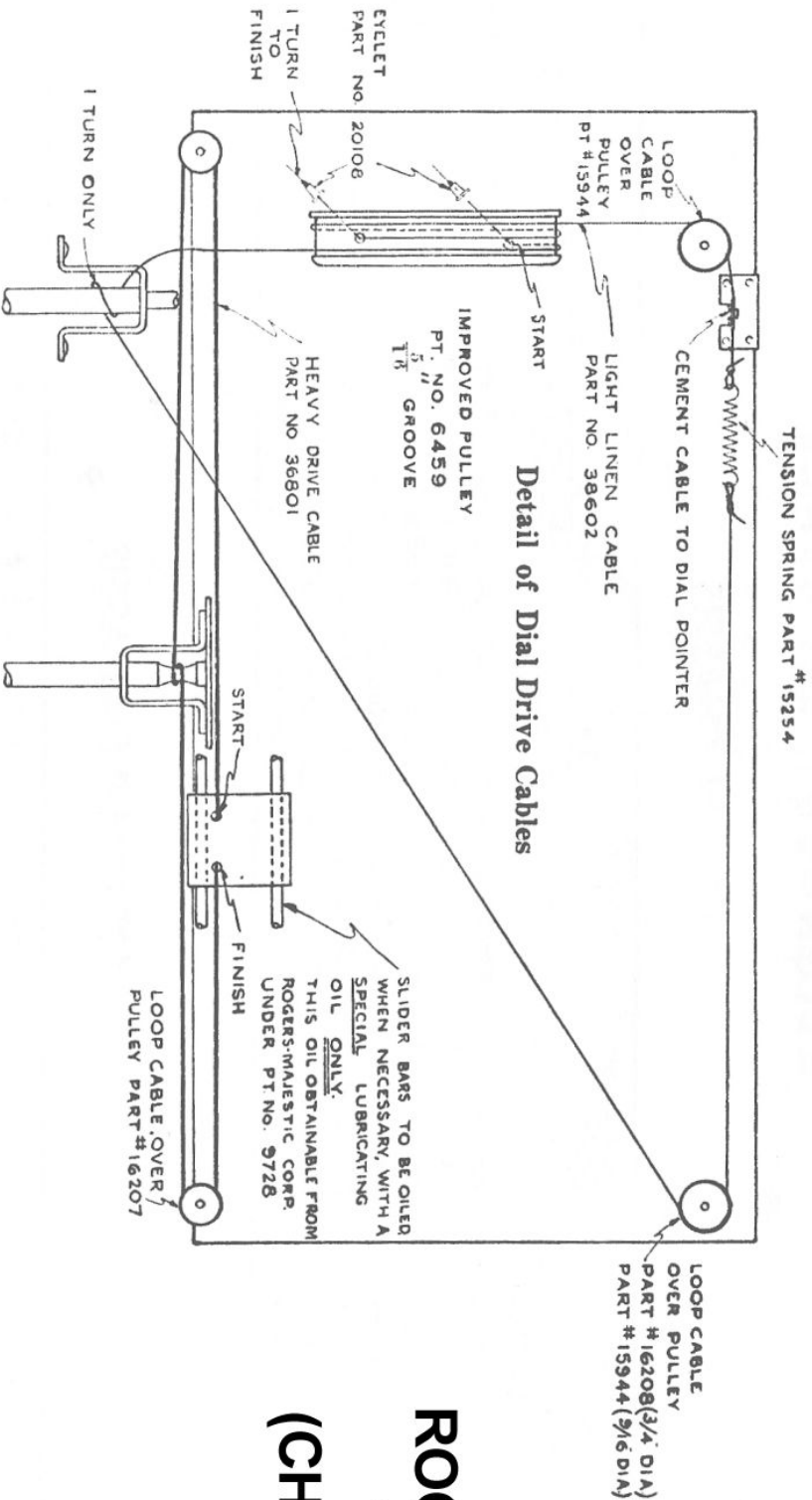
20J8M 50Y6G 35L6GT 12K7M 12B6M
HEATER CONNECTIONS
CIRCUIT SCHEMATIC — TYPE 10RA561 CHASSIS



SEE DETAIL OF HEATER CONNECTIONS

ALIGNMENT SEQUENCE

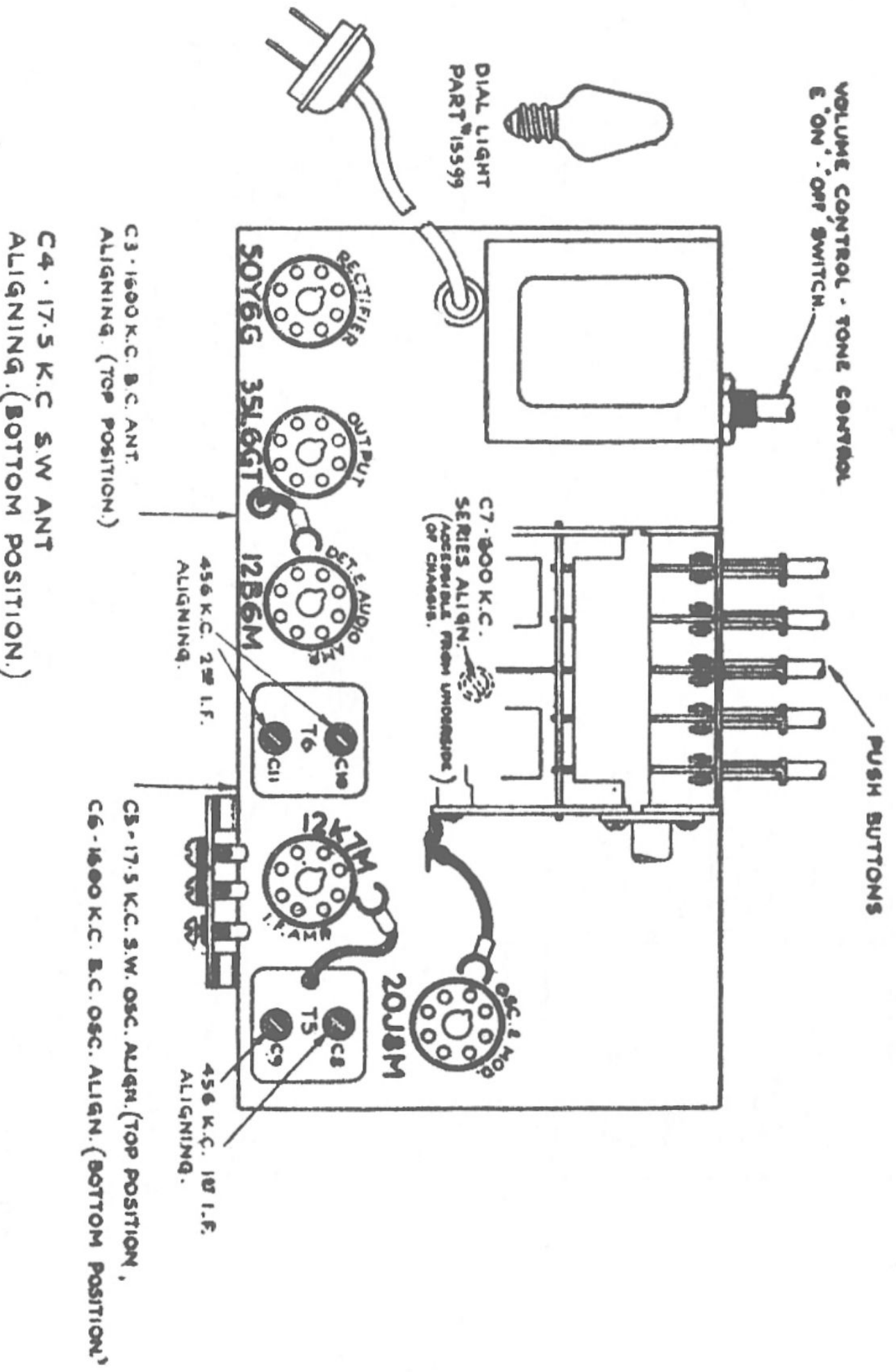
Opera-tion	Connect Generator	Set Gen'rator Tuning	Set Receiver Tuning	Wave Band	Dummy Antenna	Volume Control	Adjust	Remarks
1	To Grid Cap of 20J8M Tube	456 kc/s.	700-800 kc/s.	Broadcast	.1 mfd.	Max.	C8, C9, C10, C11	To Peak I.F.
2	To Antenna	1600 kc/s.	1600 kc/s.	Broadcast	.0002 mfd.	Max.	C6	To Peak Osc.
3	To Antenna	1600 kc/s.	1600 kc/s.	Broadcast	.0002 mfd.	Max.	C4	To Peak Ant
*4	To Antenna	600 kc/s.	600 kc/s.	Broadcast	.0002 mfd.	Max.	C7	To Track Osc.
5	To Antenna	1600 kc/s.	1600 kc/s.	Broadcast	.0002 mfd.	Max.	C6	To Check Osc.
6	To Antenna	17.5 mc/s.	17.5 mc/s.	Short-wave	400 ohms	Max.	C5	To Peak Osc
7	To Antenna	17.5 mc/s.	17.5 mc/s.	Short-wave	400 ohms	Max.	C3	To Peak Ant.
8	To Antenna	17.5 mc/s.	17.5 mc/s.	Short-wave	400 ohms	Max.	C5	To Peak Osc.



ROGERS MAJESTIC 15/55 & 15/58 (CHASSIS 10RA561)

DIAL CABLES:

- (1) Remove one of the turns from the tuning spindle if this has not been removed.
- (2) Replace the cable drum on the end of the condenser gang with the new improved drum, Pt. No. 6459. This drum is wider, with slightly higher shoulders.



ROGERS MODEL 15/55, 15/58 (CHASSIS 10RA561)