



RCA VICTOR



MODEL VE 22 TWO-TUBE, A-C ELECTRIC PHONOGRAPH

TECHNICAL INFORMATION AND SERVICE DATA

—1947 No. 11—

GENERAL SERVICE DIVISION

RCA VICTOR COMPANY LTD.



Electrical and Mechanical Specifications

RADIOTRON COMPLEMENT

- (1) Type 50L6GT Audio Voltage Amplifier
(2) Type 35Z5GT Rectifier

POWER OUTPUT

Undistorted80 watts
Maximum 1.75 watts

LOUDSPEAKER

Type 4" x 6" Elliptical P.M.
Impedance (V.C.) 3.4 ohms at 400 cycles

POWER SUPPLY

Rating A 105-125 volts, 60 cycles, 40 watts
Rating B 105-125 volts, 25 cycles, 40 watts

MOTOR-BOARD

Motor Type Synchronous, rim drive
Turntable Speed 78 r.p.m.
Pickup High-Impedance crystal
Pickup Impedance 100,000 ohms at 1000 cycles

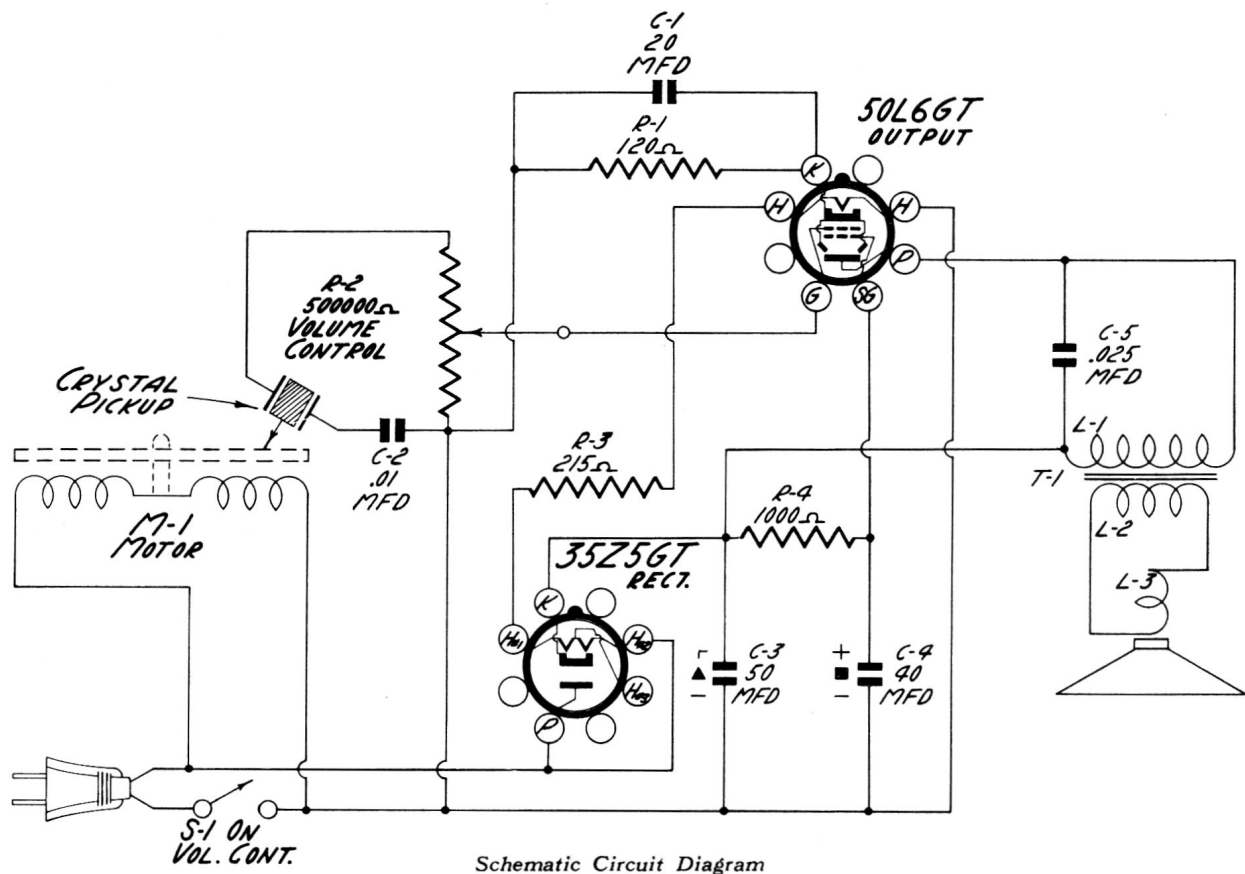
CABINET DIMENSIONS

Height 6½ inches
Width 12½ inches
Depth 10 inches

General Description

The Model VE22 electric phonograph consists of a two tube amplifier, a four inch by six inch elliptical speaker, a constant speed rim drive induction motor, and

a light weight crystal pickup, combined in a portable type cabinet.

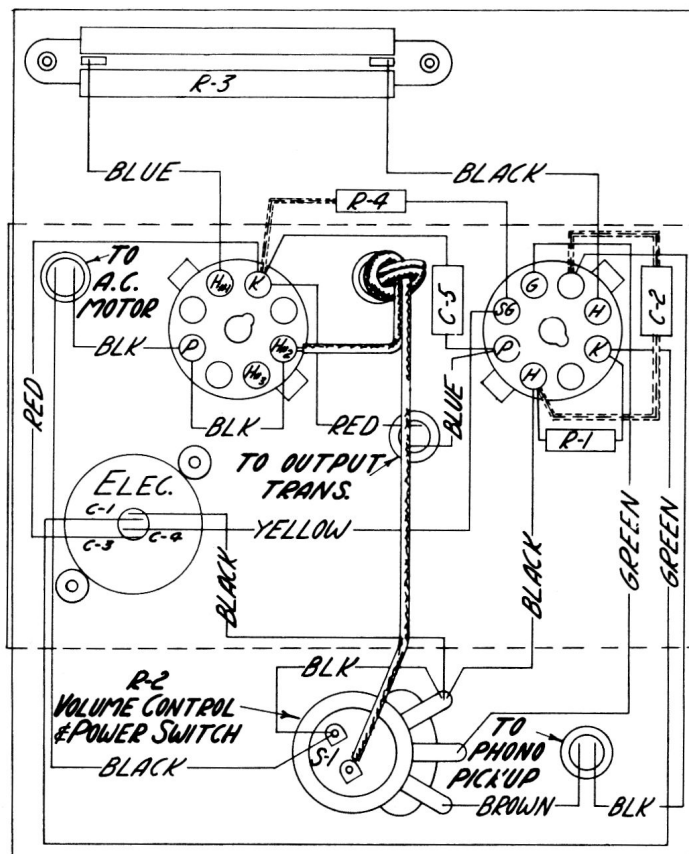


Service Data

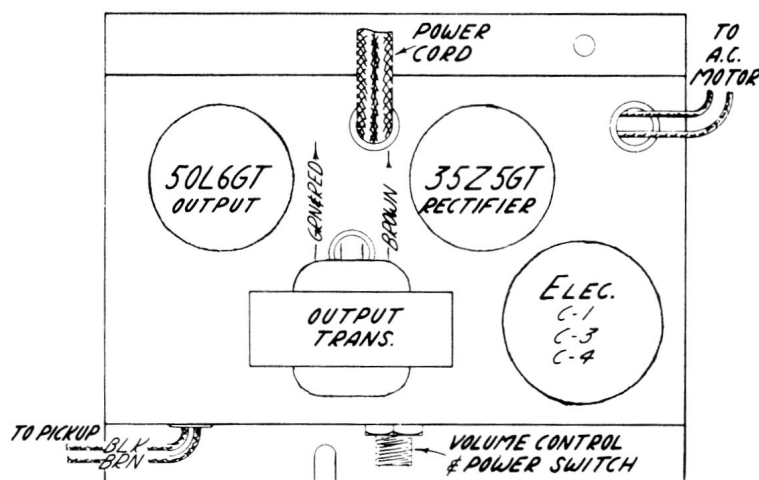
The Crystal pickup unit is thoroughly sealed in a metal casing as protection against extreme changes of climate. If failures occur due to a defective crystal unit, no attempt should be made to repair the unit, but a new replacement crystal unit should be installed.

The Turntable drive is a self-starting, constant speed rim drive induction motor. The motor speed should be 78 R.P.M., and may be checked by placing a piece of paper between a record and the turntable, with the paper protruding beyond the edge of the record, and counting the number of revolutions of the turntable per minute while playing a record.

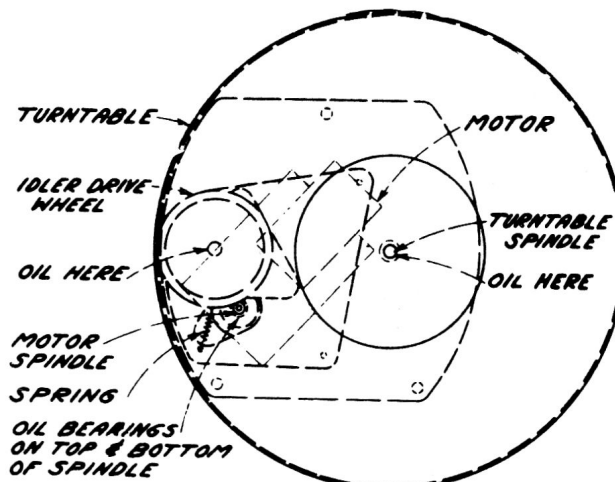
It is important that the drive motor spindle, and rubber tire be kept clean and free from oil, grease, dirt or any foreign matter at all times. Any quick drying naphtha is satisfactory for cleaning these parts.



Motor Data



Chassis Layout



Turntable Lubrication.—Apply a few drops of medium machine oil to the turntable spindle bearing every six months.

REPLACEMENT PARTS FOR MODEL VE 22

Insist on genuine factory tested parts, which are readily identified and may be purchased from authorized dealers.

STOCK NO.	DESCRIPTION	STOCK NO.	DESCRIPTION
AMPLIFIER ASSEMBLY			
4937	Capacitor-.01 Mfd. (C2).....	S-3462	Screw-Pickup needle screw (Pkg.2)..
37706	Capacitor-.025 Mfd.(C5).....	S-3465	Screw-Pickup crystal retaining screw (Pkg.10).....
S-3558	Capacitor-Electrolytic 50-40-20 Mfd. (C1,C3,C4).....	S-3466	Spring-Pickup cable retaining spring (Pkg.2).....
30189	Resistor-120 Ohms (R1).....	MOTOR ASSEMBLIES	
S-3560	Resistor-215 Ohms 8 Watt (R3)....	S-3077	Motor-110 V. 60 cycle (M1).....
34766	Resistor-1000 Ohms 1/4 Watt (R4)..	S-3078	Motor-110 V. 25 cycle (M1).....
37605	Socket-Tube socket.....	Note:- Above motors supplied with short spindle.	
S-4193	Volume Control (R2, S1).....	S-4247	Spindle-Turntable spindle (long)...
SPEAKER ASSEMBLIES		S-3080	Spring-Drive wheel tension(Pkg.2)..
S-3556	Dust Cap (Pkg.3).....	S-3081	Turntable.....
S-3867	Cone and Voice Coil Ass'y. (L3)...	S-3082	Wheel-Rubber tired drive wheel....
S-3554	Speaker.....	MISCELLANEOUS ASSEMBLIES	
S-4194	Output Transformer (L1,L2).....	S-3266	Knob-Volume Control Knob.....
PICKUP ASSEMBLIES		31986	Cable-Pickup cable.....
S-3459	Arm-Pickup arm shell only.....	S-3463	Rest-Pickup arm rest (Pkg.2).....
S-4249	Base-Pickup arm base & pivot shaft..	S-3467	Cord-Power cord.....
S-3553	Crystal-Crystal cartridge.....	S-4250	Support-Lid support.....
31054	Grommet-Pickup base rubber grommet	S-4252	Hinge-Lid Hinge.....
		S-4251	Catch-Lid ring pull catch.....

All prices and parts are subject to change or withdrawal without notice.