



RCA VICTOR



MODEL VA34

Automatic Record Player

TECHNICAL INFORMATION AND SERVICE DATA

1948 No. 2

GENERAL SERVICE DIVISION

RCA VICTOR COMPANY LTD.



MODEL VA34

Electrical and Mechanical Specifications

PHONOGRAPH

Type ----- Automatic
Record Capacity ----- Twelve 10-inch or Ten 12-inch
Turntable Speed ----- 78 r.p.m.

PICKUP

Type ----- Crystal
Impedance ----- 100,000 ohms at 1,000 cycles
Average Output ----- 1.0 volts at 400 cycles
across 500,000 ohm load

POWER SUPPLY

Rating A ----- 105-125 volts, 60 cycles, 20 watts
Rating B ----- 105-125 volts, 25 cycles, 20 watts

CABINET DIMENSIONS

Height ----- 10 inches
Width ----- 17 $\frac{5}{8}$ inches
Depth ----- 14 $\frac{1}{2}$ inches

GENERAL DESCRIPTION

Model VA34 is a table model radio attachment incorporating an automatic record changing mechanism and a compensated volume control network. The record changer used is similar to the 960260-2 mechanism with the exception of the tone arm and crystal cartridge. These parts are listed in the replacement parts list. Reference to the 960260-2 Service Notes will disclose complete adjustment details and service hints for the automatic mechanism.

Where a receiver has a phono input socket supplied for ease in connecting a record player, simply plug it into the socket and the unit is ready for operation.

CONNECTION TO RADIO RECEIVER

In general, the automatic record player attachment must be used with radio receivers or amplifiers having at least two stages of high gain audio amplification. The output of the automatic record player attachment should be connected to the input of the first audio tube, and at the same time the output of the radio receiver portion of the chassis should be shorted or opened, to prevent radio signals being heard while the automatic record player is in operation.

With ordinary audio amplifiers, the output from the automatic record player should be connected directly to the input, provided the input is of the high impedance type.

Methods of connecting the automatic record player to various types of audio systems are given in the accompanying text and illustrations. The RCA Stock No. S-4200 Radio-Phono switch is used for switching from radio to phonograph, as desired.

SWITCH AND PICKUP DATA

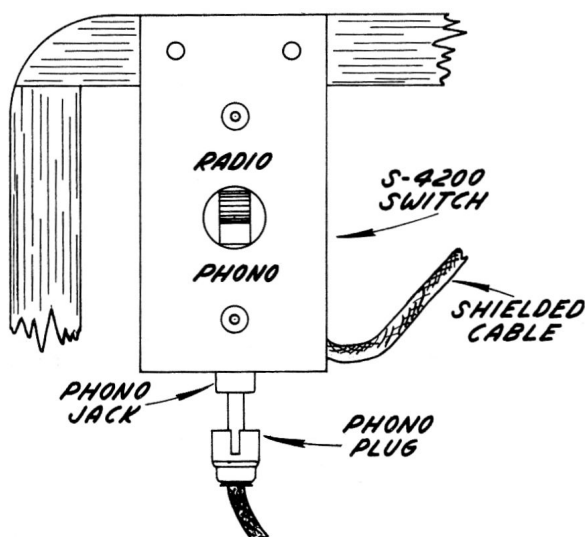


Figure 1—Switch Mounting

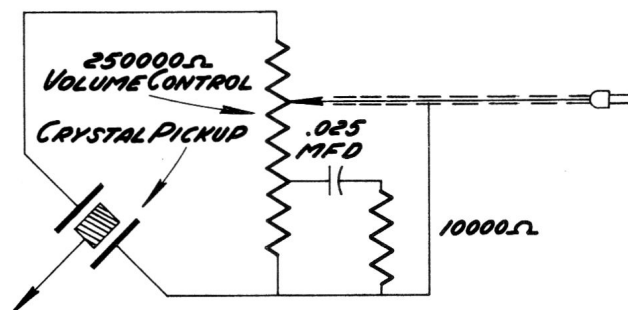
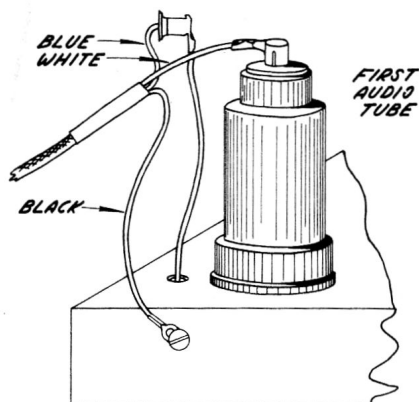


Figure 2—Pickup Schematic

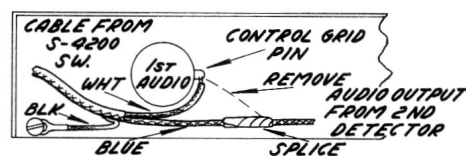
Connecting Record Player to Radio Receivers

In radio receivers which do not incorporate any connections for record player attachment, proceed as follows:—

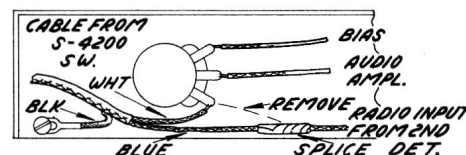
RADIO RECEIVERS WHERE FIRST AUDIO AMPLIFIER TUBE IS OF THE GRID CAP TYPE.



RADIO RECEIVERS WHERE FIRST AUDIO TUBE IS OF THE GRID CAP TYPE, AND FIXED BIAS FOR TUBE IS OBTAINED THROUGH GRID LEAD.



RADIO RECEIVERS WHERE THE VOLUME CONTROL IS IN THE AUDIO INPUT CIRCUIT.



REPLACEMENT PARTS FOR MODEL VA34

Insist on genuine factory tested parts, which are readily identified and may be purchased from authorized dealers.

STOCK NO.	DESCRIPTION	STOCK NO.	DESCRIPTION
RECEIVER ASSEMBLIES		S-4009 Spring-Motorboard Mounting (Pkg. 2)	
S-3651	Capacitor—.025 MFD.....	S-4040	Support-Lid Support (L.H.).....
S-3642	Motor-60 cycles.....	S-4312	Washer "C" Washer & Rubber Washer for Motorboard Mtg. (Pkg. 2).....
S-3641	Motor-25 cycles.....	AUTOMATIC RECORD CHANGER MECHANISM	
3078	Resistor-10,000 ohms.....	Refer to 960260-2 Service Note for Replacement Parts and Service Data.	
S-3881	Volume Control-250,000 ohms.....	NOTE: With following exception:	
MISCELLANEOUS ASSEMBLIES		71172	Arm-Pickup arm shell only.....
S-3467	Cord-power cord.....	S-3461	Crystal-Crystal cartridge.....
S-3882	Cover-Volume Control Cover.....	71174	Screw-Needle screw (Pkg. 2).....
36386	Decal.....		
S-3883	Knob-Red brown.....		

All parts and prices subject to change or withdrawal without notice.