



RCA Victor

Model VA-15A Deluxe Victrola Attachment

TECHNICAL INFORMATION AND SERVICE DATA

SERVICE DIVISION • RCA VICTOR COMPANY LIMITED • MONTREAL



Model VA-15A

Specifications

Record Capacity Twelve 10-inch or Ten 12-inch
MOTOR, Rim Drive Constant-speed,
PICKUP, Permanent Stylus Crystal
Pickup Impedance 0.1 meg. at 1,000 cycles
Average Output $1\frac{1}{2}$ volts across 0.5 meg.

POWER SUPPLY RATING

A 105-125 volts, 60 cycles, 14 watts
B 105-125 volts, 25 cycles, 14 watts
CABINET DIMENSIONS VA-15A..... $10\frac{3}{8}$ x $17\frac{1}{2}$ x 15 $\frac{1}{2}$ in.
Weight, gross 33 lbs.

General Description

Model VA-15A is a table model deluxe Victrola attachment incorporating the Type RP-158 automatic record changing mechanism and a compensated volume control network. Reference to the RP-158 Service Notes will disclose complete adjustment details and service hints for the automatic mechanism.

Where a receiver has a terminal board supplied for ease in connecting a record player, reference to the Service Notes will disclose full connection details for the particular model in question.

Connecting Model VA-15A to Radio Receivers

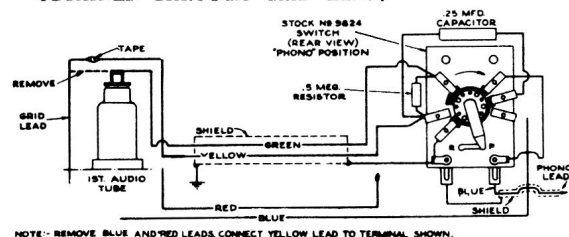
Methods of connecting the Victrola Attachment to various types of audio systems are given in the accompanying text and illustrations. The data given requires that an RCA Stock No. 9824 Radio-Phono switch be used for switching from radio to phonograph, as desired. For ease in connecting the "phono" lead to the Stock No. 9824 switch, the male plug on the end of the lead should be removed by unsoldering or by cutting it off. RCA VICTOR RECEIVERS MFG. 1939, 1940, 1941, 1942.

Plug male connector on the end of the "phono" lead into the female connector on the receiver chassis, or push button switch.

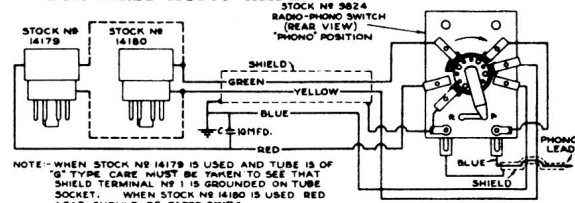
Push or turn the "Phono" switch to "Phono" position, and operate the Victrola Attachment according to instructions.

In general, the Victrola Attachment must be used with radio receivers having at least two stages of high-gain audio amplification. The output of the Victrola Attachment should be connected to the input of the first audio tube, and at the same time the output of radio receiver portion of the chassis should be shorted or opened, to prevent radio signals being heard while the Victrola Attachment is in operation.

RADIO RECEIVERS WHOSE FIRST AUDIO TUBE IS OF THE GRID CAP TYPE, AND FIXED BIAS FOR TUBE IS OBTAINED THROUGH GRID LEAD.



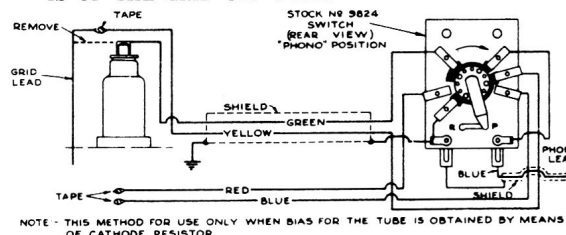
RADIO RECEIVERS USING 6C5 OR 6J5, 6C5G OR 6J5G, TUBE FOR FIRST AUDIO AMPLIFIER.



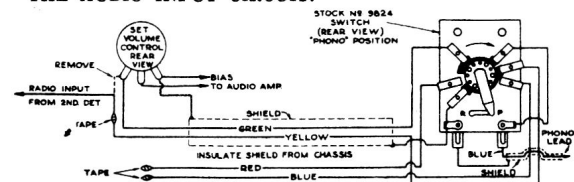
Stock No. 14179 Adapter opens grid circuit, and inserts 2,700 ohm resistor in cathode of 6C5 or 6J5 tubes, for bias on Phono reproduction.

Stock No. 14180 Adapter opens grid circuit of 6C5 or 6J5 tube.

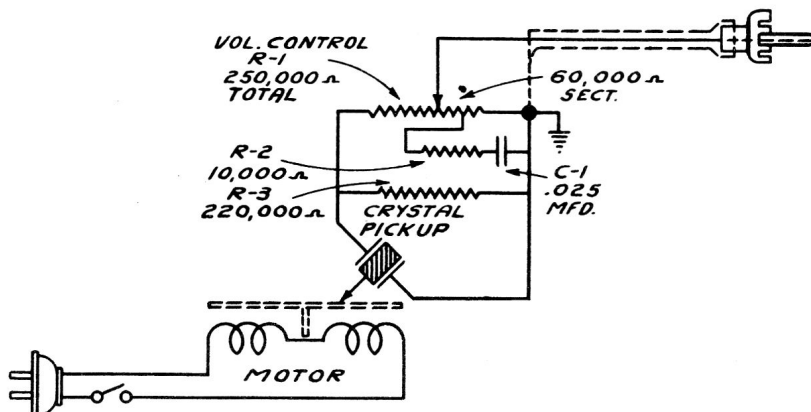
RADIO RECEIVERS WHOSE FIRST AUDIO AMPLIFIER TUBE IS OF THE GRID CAP TYPE.



RADIO RECEIVERS WHERE THE VOLUME CONTROL IS IN THE AUDIO INPUT CIRCUIT.



METHODS OF ATTACHING STOCK NO. 9824 SWITCH ASSEMBLY TO RADIO RECEIVERS.



Pickup and Motor Schematic Circuit Diagram

REPLACEMENT PARTS FOR MODEL VA-15A

Insist on genuine factory tested parts, which are readily identified and may be purchased from authorized dealers.

STOCK NO.	DESCRIPTION	STOCK NO.	DESCRIPTION
MISCELLANEOUS ASSEMBLIES			
33595	Cable-Shielded Output cable with Plug.....	30900	Spring-Knob Spring (Pkg.5).....
4870	Capacitor-.025 mfd. (C1).....	S-3395	Volume Control (R1).....
S-3101	Knob-Volume Control Knob.....	REFER TO RP-158 SERVICE NOTES FOR PICKUP AND RECORD CHANGER ASSEMBLIES	
31048	Plug-Pickup Cable Plug.....		
3078	Resistor-10,000 ohm 1/4 watt (R2)..		
14583	Resistor-220,000 ohm 1/4 watt (R3).		