

RCA VICTOR



RADIO-PHONOGRAPH COMBINATION

MODEL V-800

SERVICE DATA

—1952 NO. 8—

HEAD OFFICE SERVICE DEPARTMENT
RCA VICTOR COMPANY LIMITED
MONTREAL, QUE.

THIS SERVICE DATA IS ISSUED AS A SUPPLEMENT TO THE ORIGINAL (First Edition—First Printing) SERVICE DATA FOR MODEL 4QV8C.

Due to a scarcity of type 6SF7 tubes it became necessary to make a change in the radio chassis. In chassis stamped RC 620A a type 6SF7 tube is used as I.F. amplifier and detector. In later chassis (stamped RC 620D) a 6SK7 tube is used

as I.F. amplifier and a crystal diode rectifier (CR101) is wired into the circuit to perform the detector function. The revised part of the circuit is shown below.

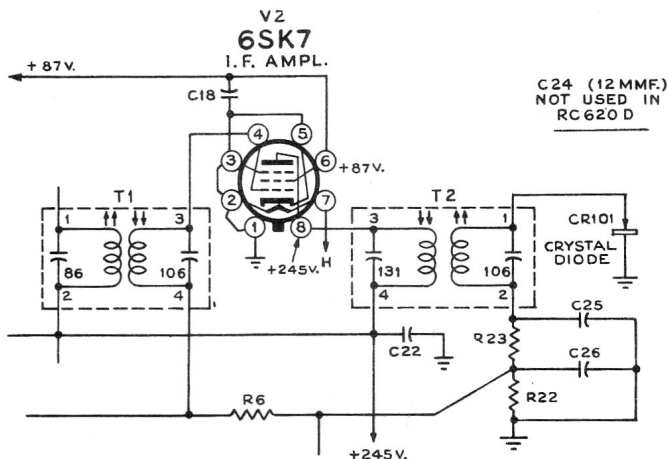
REPLACEMENT PARTS

Same as listed in 4QV8C Service Data except as listed below.

STOCK NO.	DESCRIPTION
	CHASSIS NO. RC-620D
S-7579	Rectifier—Crystal diode rectifier (CR101) Add:
S-5834	Capacitor—Ceramic, 12 mmf. (C24) Delete:

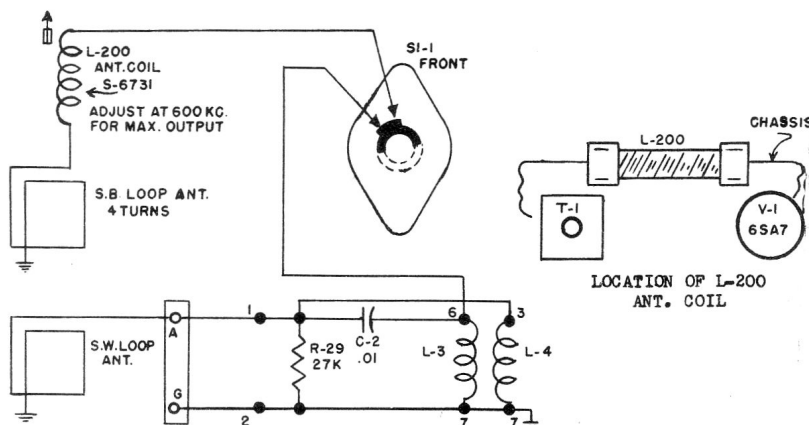
FOR 45 r.p.m. RECORD CHANGER SERVICE INFORMATION—REFER TO RP-168 SERIES SERVICE DATA.

FOR 78/33 r.p.m. RECORD CHANGER SERVICE INFORMATION—REFER TO 960282 SERIES SERVICE DATA.



Except as described above and in the replacement parts, the original service data will apply to instruments using chassis stamped RC 620D as well as for chassis stamped RC 620A.

The Model V-800 is a Radio-Phonograph Combination receiver similar to Model 4QV8C with the exception of the antenna circuit as shown below.



SCHEMATIC DIAGRAM OF V-800 ANTENNA CIRCUIT

For more detailed technical information, alignment and parts list, please refer to the following 4QV8C Service Note.