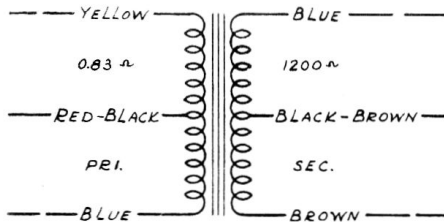
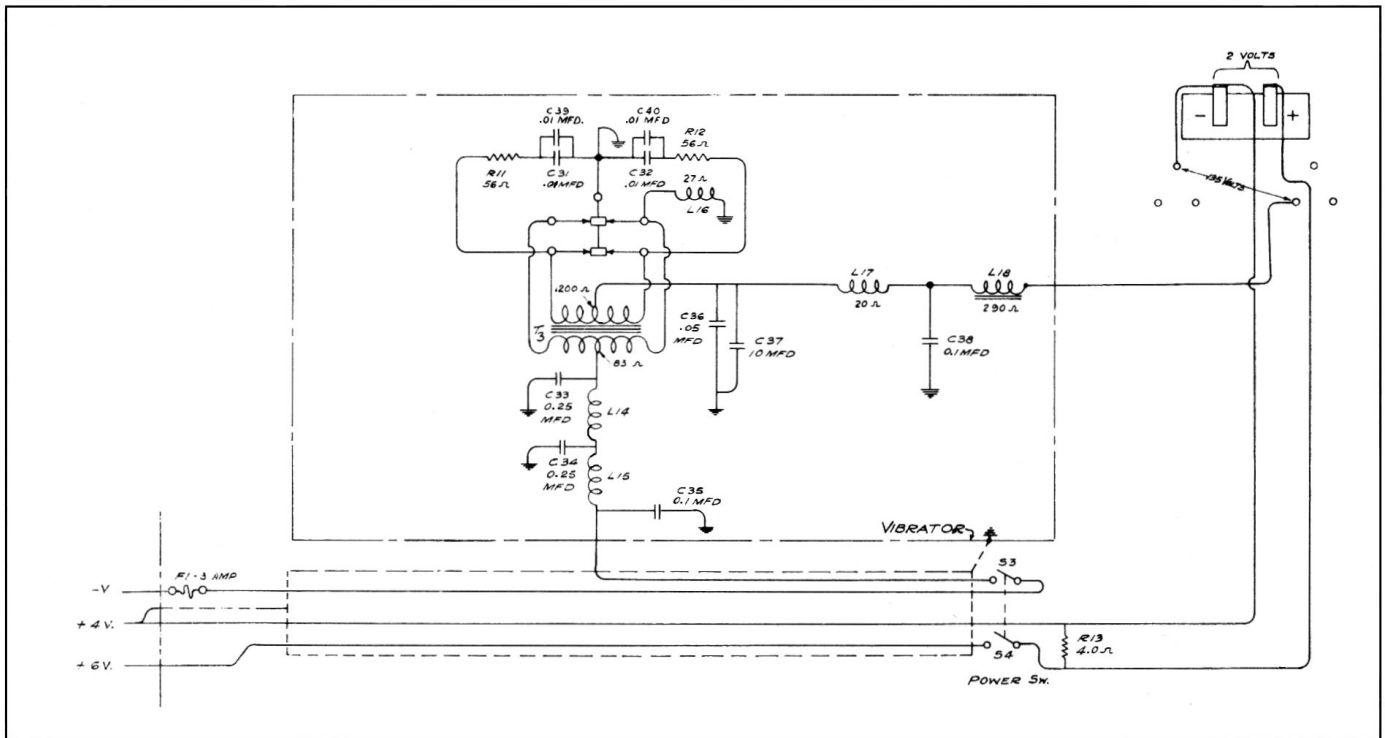
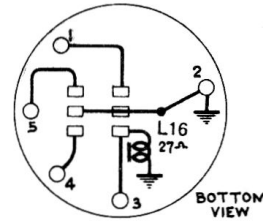


Model V 6-1 Vibrator



Vibrator Transf.



INTERNAL CONNECTIONS OF VIBRATOR

REPLACEMENT PARTS

Insist on genuine factory tested parts, which are readily identified and may be purchased from authorized dealers.

Stock No.	Description	Stock No.	Description
S-1656	Cable—Battery cable complete with fuse connector, fuse and battery clips	12819	Coil—Coil Assembly complete (L17)
6516	Connector—Fuse connector	4323	Knob—"ON" and "OFF" Knobs
10907	Fuse—3 Ampere fuse (F1)	5034	Resistor—56 ohms—carbon type 1/2 watt (R11, R12)
4937	Capacitor—.01 Mfd. (C31, C32, C39, C40)	S-1659	Resistor—4 ohms, Flexible type (R13)
4791	Capacitor—.01 Mfd. (C35)	12815	Reactor—(L14)
4836	Capacitor—.05 Mfd. (C36)	12818	Reactor—(L18)
S-1657	Capacitor—.1 Mfd. (C38)	S-1660	Socket—3 contact socket
S-1658	Capacitor—.25 Mfd. (C34)	S-1627	Socket—5 contact vibrator socket....
4840	Capacitor—.25 Mfd. (C33)	S-1661	Switch—Power switch (S3, S4)
11387	Capacitor—10 Mfd. (C37)	12816	Transformer—Vibrator Transformer (T3)
12179	Coil—Choke coil (L-15)	12817	Vibrator