



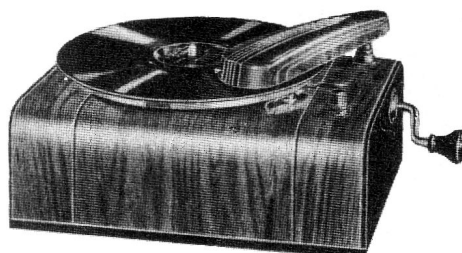
RCA Victor

MODEL V3

Victrola Attachment

TECHNICAL INFORMATION AND SERVICE DATA

SERVICE DIVISION • RCA VICTOR COMPANY LIMITED • MONTREAL



General Description

The RCA Victor Model V-3 Victrola attachment is designed for use with a battery-operated receiver where a mechanical type unit is required having the characteristics necessary for record fidelity. The motor is of the mechanical, spring wound, variable speed type completely governed to maintain a constant

speed. The pickup assembly is of the crystal type housed in a light weight, plastic shell of modern styling. A volume control is placed across the pickup output terminals providing a means of controlling the output voltage.

Service Data

Motor.—The drive motor is of simple design and substantial construction. It should require little or no service if properly maintained. Attention to lubrication of the moving parts and occasional cleaning of the mechanism will go far to prevent faulty operation. Should it become necessary to repair the motor, the following procedure should be applied: CAUTION. —Allow the motor mechanism to run down completely before attempting adjustment, repairs, or replacements.

Removing Motor from Cabinet.—Remove the winding key. To dismount the motor, unscrew the spindle cap and remove turntable, slightly tapping the spindle while exerting an upward lift on the turntable. Loosen the screw holding the speed-regulating lever and remove the latter. The three screws holding motor to motor board should then be loosened to permit removal of motor assembly.

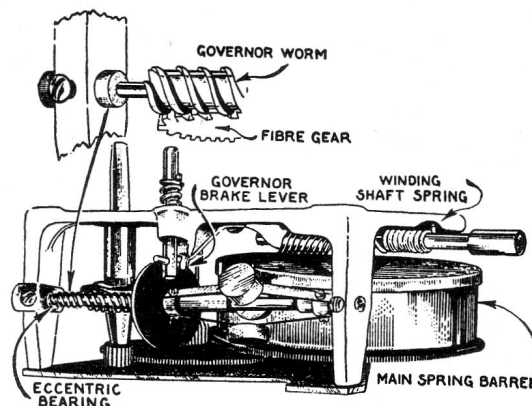
Replacing Main Spring Barrel.—In case of main spring failure, the entire spring barrel and gear should be replaced. Remove the spring-barrel spindle screw by **unscrewing to right**. Remove the C washer and two pillar screws holding bottom plate. Remove bottom plate, intermediate spindle shaft, and spring barrel. Reassemble parts in reverse sequence.

Winding Shaft Spring.—This spring functions as a friction ratchet. It may be removed as follows: remove pin holding winding worm on shaft; remove winding shaft; then remove screw holding spring. Replace in reverse sequence.

Governor Adjustments.—The mesh of the worm and fiber gears is adjusted by rotation of the eccentric spindle bearings. The adjustments should be made so that the worm meshes properly with the fiber gear and rotates freely without binding. The

bearings should be accurately aligned with each other. The minimum of spindle end-play which permits smooth operation should be used.

Speed Regulator Lever.—After assembly, adjust the speed regulator until the turntable rotates at 78 r. p. m.; loosen the speed regulator screw and set pointer to center of speed indicator scale; tighten screw and re-check turntable speed.



Lubrication.—All moving parts of the motor should be thoroughly cleaned and lubricated every six months to prevent excess wear and to assure proper operation. A small amount of grease should be applied to the worm gear of the governor, the gear of the winding shaft, and on the small pinion gear. All other points, including regulator friction pad, should be lubricated with light oil. All motor parts should be covered with a light film of oil to prevent rusting.

REPLACEMENT PARTS FOR MODEL V-3

Insist on genuine factory tested parts, which are readily identified and may be purchased from authorized dealers.

STOCK NO.	DESCRIPTION	STOCK NO.	DESCRIPTION
MOTOR ASSEMBLIES		PICKUP ASSEMBLIES	
33682	Brake-Turntable brake complete.....	S-2451	Base-Pickup arm mounting base and pivot shaft.....
33371	Cap-Turntable spindle cap.....	33122	Crystal-Pickup crystal cartridge and needle screw.....
33366	Gear-Intermediate drive gear and shaft.....	33123	Damper-Viscoloid damper for pickup armature.....
13858	Gear-Winding worm gear-located on spring barrel shaft.....	33529	Screw-Pickup needle screw.....
13859	Gear-Winding gear-located on spring barrel shaft.....	33591	Shell-Pickup shell-less crystal unit and base.....
13857	Governor-Governor assembly complete	MISCELLANEOUS ASSEMBLIES	
33679	Indicator-Speed regulator arm & pointer.....	9824	Cable-Radio-Record switch and cable assembly.....
33685	Key-Winding key.....	S-2612	Control-Volume control.....
13854	Motor-Spring motor complete.....	33681	Escutcheon-Speed lever escutcheon.
13860	Shaft-Winding key shaft & socket - less winding gear.....	3961	Knob-Volume control knob.....
33367	Spindle-Motor spindle & two gears assembled.....	31048	Plug-Male plug for pickup cable.....
13835	Spring-Mainspring, spring barrel and drive gear.....		
33369	Turntable-Motor turntable complete.		
33372	Washer-Turntable drive washer and rubber bushing.....		
13862	Weight-Governor weight and spring..		