

The output lead from the volume control is a single conductor shielded cable, terminating in a small, male, pin plug. This pin plug fits into the female jack receptacle provided on most RCA Victor radio receivers. If no receptacle is provided on the receiver the correct adaptor with No. S-3122 Switch may be used.

Motor and Pickup Data

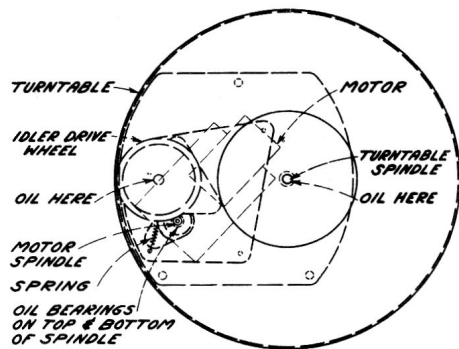


Figure 1—Motor Top View

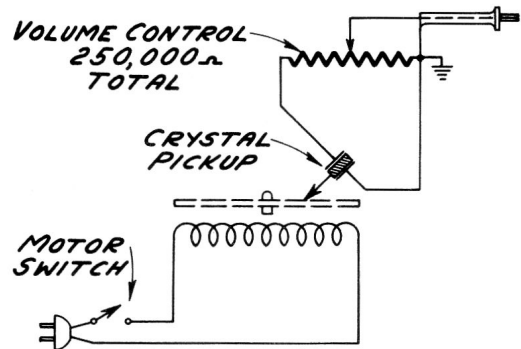


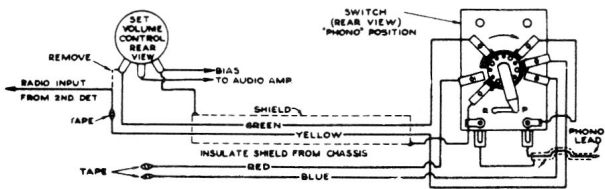
Figure 2—Motor and Pickup Schematic

Connecting Record Player to Radio Receivers

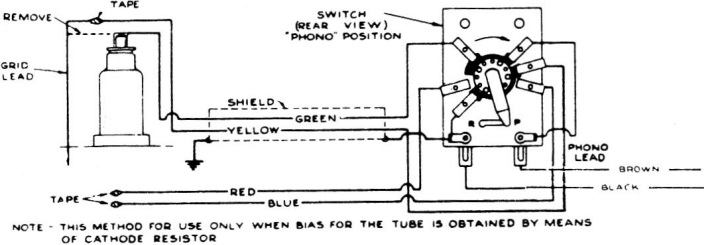
In general, the Record Player must be used with radio receivers having at least two stages of high-gain audio amplification. The output of the Record Player should be connected to the input of the first audio tube, and at the same time the output of radio receiver portion of the chassis should be shorted or opened, to prevent radio signals being heard while the Record Player is in operation.

Methods of connecting the Record Player to various types of audio systems are given in the accompanying diagrams. The data given requires that a Stock No. S-3122 Radio-Phono switch be used for switching from radio to phonograph. For ease in connecting the 'phono' lead to the Stock No. S-3122 switch, the male plug on the end of the lead should be removed by unsoldering or by cutting it off.

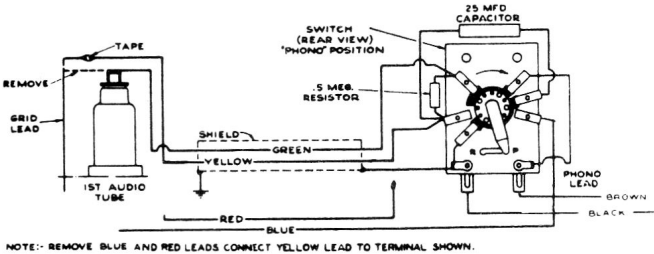
RADIO RECEIVERS WHERE THE VOLUME CONTROL IS IN THE AUDIO INPUT CIRCUIT.



RADIO RECEIVERS WHERE FIRST AUDIO AMPLIFIER TUBE IS OF THE GRID CAP TYPE.



RADIO RECEIVERS WHERE FIRST AUDIO TUBE IS OF THE GRID CAP TYPE, AND FIXED BIAS FOR TUBE IS OBTAINED THROUGH GRID LEAD.



REPLACEMENT PARTS FOR MODEL V26

Insist on genuine factory tested parts, which are readily identified and may be purchased from authorized dealers.

STOCK NO.	DESCRIPTION	STOCK NO.	DESCRIPTION
<b>MOTOR ASSEMBLIES</b>			
S-3077	Motor 110 volts-60 cycle.....	31054	Grommet-Pickup base rubber grommet
S-3078	Motor 110 volts-25 cycle.....	S-3462	Screw-Pickup needle screw (Pkg.2).
S-3079	Spindle-Turntable spindle.....	S-3465	Screw-Pickup crystal retaining screw (Pkg.10).....
S-3080	Spring-Drive Wheel tension spring (Pkg.2).....	S-3466	Spring-Pickup cable retaining spring (Pkg.2).....
S-3081	Turntable-Motor turntable.....	<b>MISCELLANEOUS ASSEMBLIES</b>	
S-3082	Wheel-Rubber tired drive wheel.	S-3524	Cable-Pickup cable.....
<b>PICKUP ASSEMBLIES</b>		S-2779	Knob-Volume control knob.....
S-3459	Arm-Pickup arm (shell only)....	31048	Plug-Pickup cable plug.....
S-3460	Base-Pickup arm base and pivot shaft.....	S-3463	Rest-Pickup arm rest (Pkg.2).....
S-3461	Crystal-Crystal cartridge.....	S-4040	Support-Cabinet lid support.....
		S-3522	Volume Control & Switch.....

All parts subject to change or withdrawal without notice.