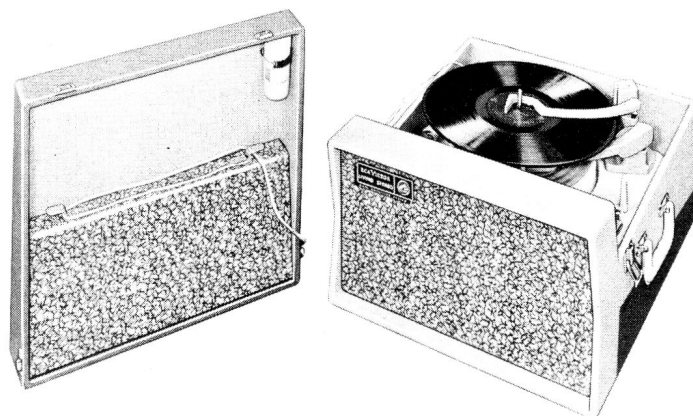




RCA VICTOR



Model SF-582

Portable Stereo Record Player

MODEL SF-582

BSR — Model UA-14 Record Changer

SERVICE DATA

— 1960 No. 20 —

ISSUED BY
SERVICE DIVISION
RCA VICTOR COMPANY, LTD.
MONTREAL, CANADA

SPECIFICATIONS

TUBE COMPLEMENT:

1. RCA 50EH5 Right Audio Output
2. RCA 50EH5 Left Audio Output

POWER SUPPLY RATING:

115 volts, 60 cycles A.C. 50 watts

LOUDSPEAKERS (2):

Size and type 4" P.M.
Voice coil impedance 3.2 ohms at 400 cycles

POWER OUTPUT:

Undistorted 1.0 watts Maximum 1.2 watts

RECORD PLAYER

Turntable speed 16-2/3, 33-1/3, 45 or 78 r.p.m.

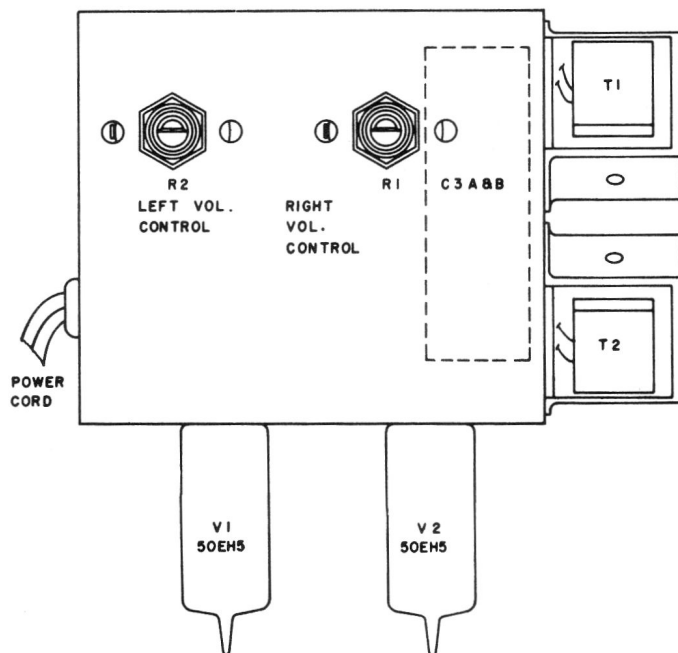
Record capacity Up to fifteen 7 inch or

twelve 10 inch or

ten 12 inch or

ten 10 inch and 12 inch intermixed

Pickup Stock No. 63-24378 Stereophonic Ceramic

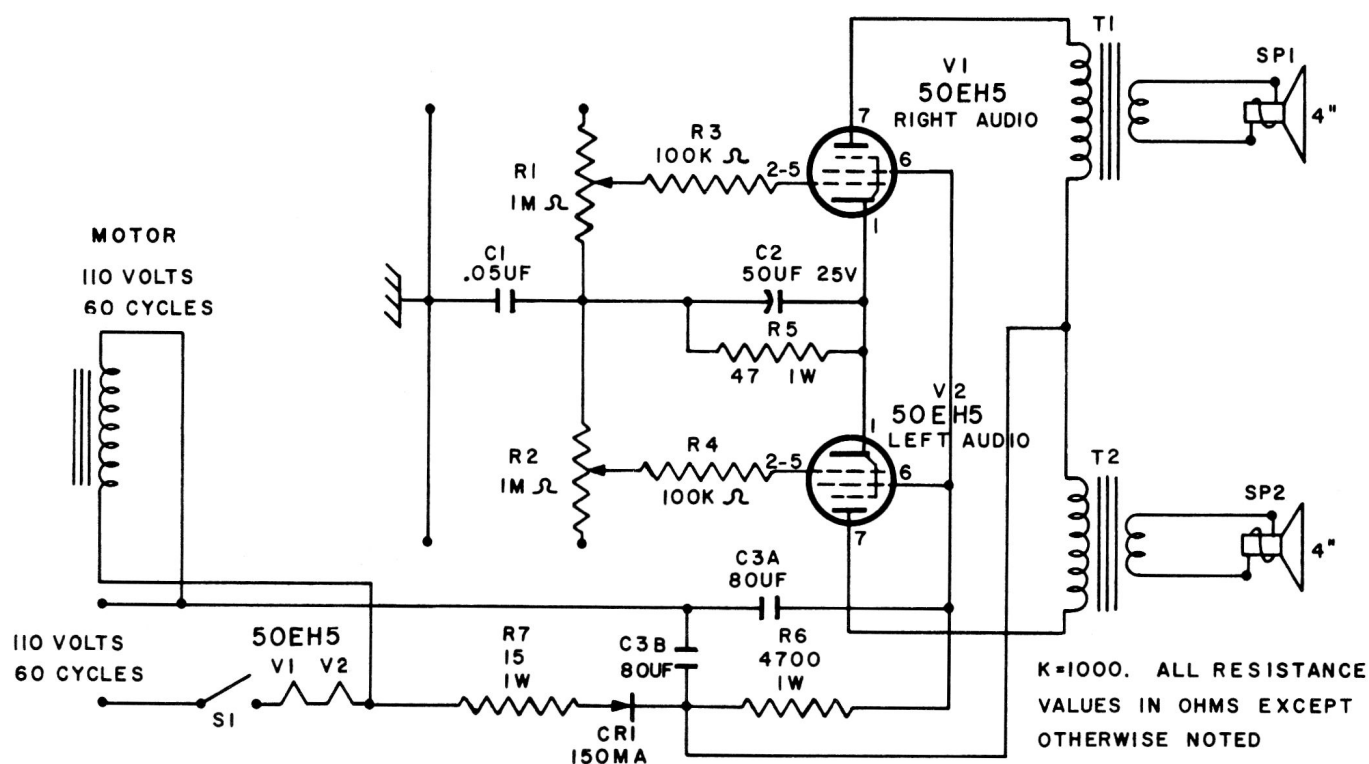


Chassis Layout

CRITICAL LEAD DRESS

1. Dress all A.C. leads away from audio input circuit.
2. Dress power cord and other leads away from moving parts of record changer.

FOR RECORD PLAYER
SERVICE INFORMATION
REFER TO
BSR—MODEL UA-14 RECORD CHANGER
SERVICE DATA
ISSUE 1960 NO. 13



SCHEMATIC DIAGRAM

REPLACEMENT PARTS LIST

Insist on Genuine Factory Tested Parts, which are readily identified and may be purchased from Authorized Dealers.

SYMBOL	STOCK NO.	DESCRIPTION	SYMBOL	STOCK NO.	DESCRIPTION
CHASSIS ASSEMBLY			MISCELLANEOUS ASSEMBLY		
C-1		Capacitor-.05 mfd. 10% 400V	*63-24379		Board-Motor Board-Brown
C-2	63-23875	Capacitor-Electrolytic-50 mfd. 25V	*63-24380		Board-Motor Board-Gray
C-3A, B	63-23197	Capacitor-Electrolytic-80/80 x 150/150V	*63-24381		Cabinet-Cabinet Ass'y.-Brown
CR-1	63-23198	Rectifier-Selenium Rectifier-150 MA	*63-24382		Cabinet-Cabinet Ass'y.-Green
R-1	63-23199	Control-Volume-Control-1 megohm	*63-24383		Cabinet-Cabinet Ass'y.-Gray
R-2	63-23199	Control-Volume-Control-1 megohm	63-24400		Clamp-45 RPM Clamp
R-3		Resistor-100,000 ohms, 10%, 1/2W	63-23207		Lid Catch
R-4		Resistor-100,000 ohms, 10%, 1/2W	63-23044		Escutcheon-"Living Stereo"
R-5		Resistor-47 ohms, 10%, 1W			Escutcheon
R-6		Resistor-4700 ohms, 10%, 1W	63-23208		Foot-Cabinet Feet (4 req'd.)
R-7		Resistor-15 ohms, 10%, 1W	63-23824		Hinge-Lid hinge
R-8		Resistor-100 ohms, 10%, 7W	63-23825		Handle-Carrying handle-White
T-1, T2	63-23874	Transformer-Audio output transformer	63-23213		Knob-Knob Ass'y. (2 req'd.)
SP1, SP2	63-20698	Speaker 4" PM Speaker-(2 req'd.)	*63-24384		Manual-Customers Instruction Manual
			63-23828		Socket-7 pin socket for 50 EH 5
			63-23215		Support-Handle Support Hardware

* Indicates New Stock Items. Only items listed under stock numbers are available as Replacement Parts.

All parts subject to change or withdrawal without notice.