

ADAPTERS Model R-93B

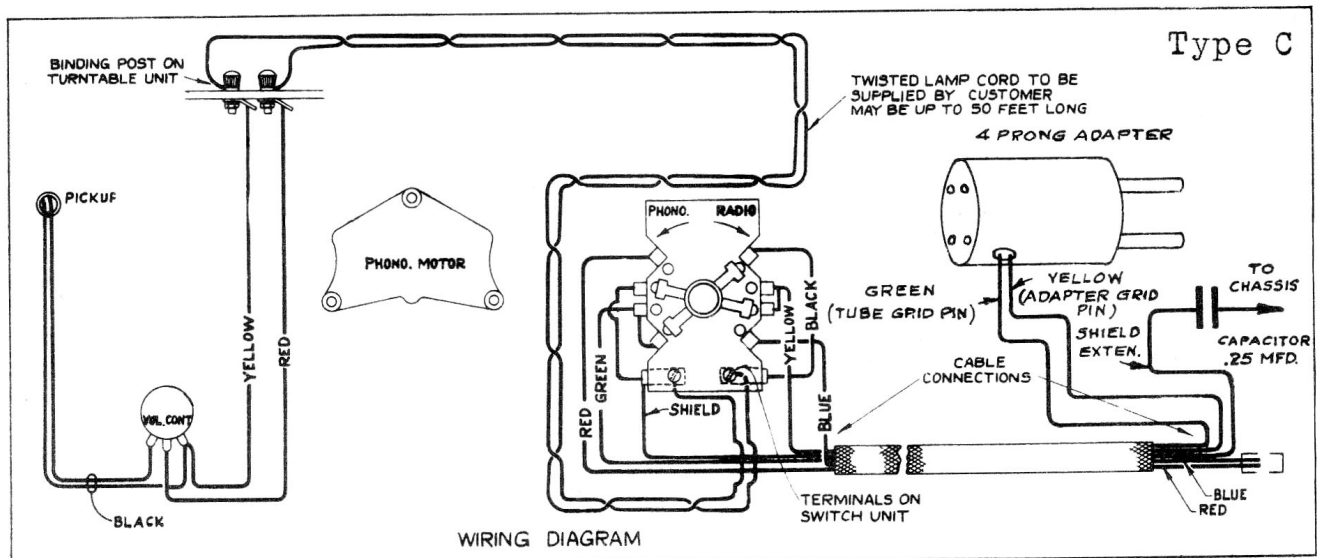
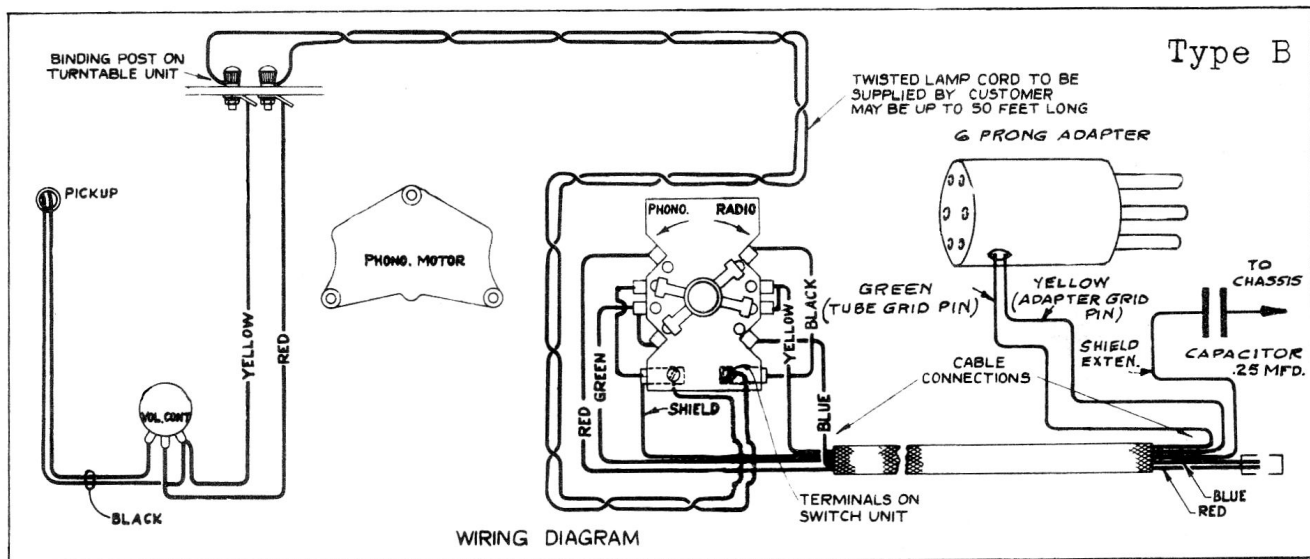
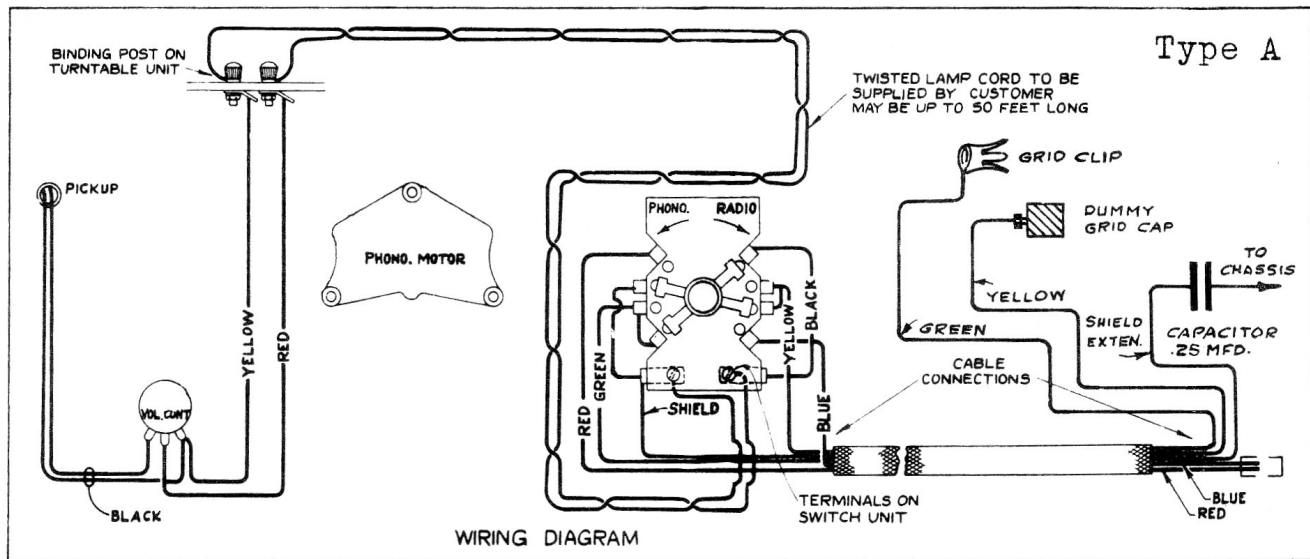


Figure 1-Wiring Diagram

ADAPTER CHART Model R93B

Model	No. of Tubes	Type Adapter	Tube Involved	Physical Position	Model	No. of Tubes	Type Adapter	Tube Involved	Physical Position
DE FOREST CROSLEY					MAJESTIC				
B510	5	A	1A6	4th	Huron	5	A	1A6	4th
B515	5	A	1A6	4th	Chippewa	5	A	1A6	4th
New Prelude	8	C	230	3rd	2751	7	C	230	1st
Empire	7	C	230	1st	Algonquin	7	C	230	3rd
Realm	7	C	230	1st	Iroquois	7	C	230	3rd
Cambridge	7	C	230	3rd	NORTHERN ELECTRIC				
Oxford	7	C	230	3rd	601	6	A	232	2nd
T. EATON CO.					502	5	A	232	2nd
4B70	7	A	234	-	503	5	A	232	2nd
4B75	7	A	234	-	412	4	B	1B5	1st
2B93-4	9	C	230	-	PHILCO				
5G85	8	C	230	-	344	7	A	232	2nd§
5B75	7	B	1B5	-	339	6	A	232	1st§
5B65	6	C	230	-	3623	6	A	232	1st§
5B60	6	C	230	-	ROGERS				
5B60A	6	C	230	-	4751	7	C	230	1st
5B56	5	B	1B5	-	955	9	C	230	2nd
5B55	5	C	230	-	925	6	A	234	1st
5B55A	5	C	230	-	930	6	A	234	1st
5B50	5	C	230	-	B7/30	7	C	230	3rd
4B61	6	A	234	-	B7/35	7	C	230	3rd
4B60	6	A	234	-	Eton	5	A	1A6	4th
3B64-5	6	A	234	-	Harrow	5	A	1A6	4th
3B61-2	6	A	234	-	ROBT. SIMPSON CO.				
4B50	5	C	230	-	6B72S	7	C	230	-
3B51-2	5	C	230	-	SPARTON				
GENERAL ELECTRIC					182	5	C	230	1st
E6B	6	B	1B5	2nd	970A	7	A	1A6	3rd
A6B	6	B	1B5	2nd	970B	7	A	1A6	3rd
EC6B	6	B	1B5	2nd	951	5	A	1C6	1st§
AC6B	6	B	1B5	2nd	954	5	A	1C6	1st§
A7B	7	A	232	2nd*	968	6	A	1A6	1st§
A7CB	7	A	232	2nd*	955	5	A	1C6	1st§
M7B	7	A	232	2nd*	STEWART-WARNER				
M7CB	7	A	232	2nd*	Dover	6	A	234	1st*
MARCONI					Galais	6	A	234	1st*
32B	8	A	234	3rd	Marvel	5	A	1C6	1st*
43	6	A	234	1st	Miracle	5	A	1C6	1st*
45	6	A	234	1st	VICTOR				
64	6	A	1A6	1st	BT6-1	6	B	1B5	2nd
65	6	A	1A6	1st	BC6-1	6	B	1B5	2nd
57	6	A	1A6	1st	BT7-1	7	A	32	2nd*
					BC7-1	7	A	32	2nd*
					135B	7	A	32	2nd*
					235B	7	A	32	2nd*

*-Denotes tube position in second row from rear. §-Denotes tube position in third row from rear.
All other positions are in first row from rear.