

# RCA VICTOR



## Model C-57 Series G-5, G-10, G41 Clock Timers SERVICE DATA

—1950 No. 12—

HEAD OFFICE SERVICE DEPARTMENT  
RCA VICTOR COMPANY, LTD  
MONTREAL, QUE.

### CLOCK-TIMER CONTROLS

1. The **RADIO Control knob** has three positions:—

- (1) **AUTO**—Connects power to radio through clock timing mechanism.
- (2) **OFF**—Disconnects power to radio.
- (3) **ON**—Connects power directly to radio.

2. The **ALARM Control knob** when pulled out, permits rotation of the small central disc to pre-set the time at which the radio is turned on automatically. The alarm buzzer, which is set when the knob is out, operates 10

minutes after the radio is turned on.

When the knob is pushed in, the alarm presetting mechanism is disengaged and the alarm buzzer is silenced.

3. The **LULLABY SWITCH knob** can be set to turn off the radio automatically after an interval of from zero (0) to sixty (60) minutes has elapsed.

4. The **TIME-SET Control** at the back of the receiver, directly behind the clock, is used to set the clock hands to the correct time.

### CLOCK-TIMER OPERATION

Operation of the clock-timer may be most readily illustrated by means of the following example. Assume that it is now 6.30 p.m. and that it is desired to have the radio turn on automatically at 9 p.m.

1. Pull out the **ALARM Control knob** and rotate counter-clockwise until "9" on the small central disc falls under the narrow pointer which is opposite (but attached to) the clock hour hand. Push the knob in again unless buzzer action is required.

2. Set **RADIO control** to **AUTO**. The radio will be turned on automatically at 9 p.m.

After listening to the radio until 10.30 p.m. assume that it is desired to re-set the clock-timer to turn the radio on again at 7 a.m.

3. Pull out the **ALARM control knob** and rotate counter-clockwise until "7" on the small central disc falls under the narrow pointer which is opposite (but attached to) the clock hour hand.

4. Set **RADIO control** to **OFF**, then back to **AUTO**. The radio is now off and will be turned on again at 7 a.m. The alarm buzzer will operate 10 minutes later.

The clock timing mechanism may also be set to operate the alarm buzzer without simultaneously turning on the radio. Proceed as in section 3, then set **RADIO control** to **OFF**. The alarm will operate 10 minutes after the time set on the small central disc.

If it is desired to listen to the radio while going to sleep, the **LULLABY SWITCH** may be set to turn off the radio automatically after an interval of from zero (0) to sixty (60) minutes has elapsed, even though the **RADIO control** is set at **OFF** or to **AUTO**. It will not turn off the radio if the **RADIO control** is set at **ON**. The **LULLABY SWITCH knob pointer** should be set between zero (0) and sixty (60) in accordance with the number of minutes operation desired.

### CONTACT ADJUSTMENT

1. Set switch to "alarm" position so that cam follower rests on timing cam. Contacts should be adjusted to .017" min. gap.

2. With switch in "OFF" position contacts should remain open as in (1) above and there should be clearance between the cam follower and the cam.

3. With switch in "ON" position, the contacts should be closed.

4. Set switch to "Alarm" position, turn alarm set knob until cam follower drops into state of timing cam. The contacts should now be closed.

5. Check for proper contact pressure by depressing lower contact strip, using a small pointed tool. If upper contact strip follows the lower, a noticeable amount before the contacts separate, the pressure is correct.

6. To check on the closing of contacts, connect a small lamp in series with the switch assembly when testing.

## TIMING

1. Set the minute and hour hands to 12 o'clock.
2. Set the timer dial so that the 12 o'clock mark lines up with small line on the dial. In this position the indicator on the hour hand should also line up with the line on the dial.
3. Adjust the timer for contact closure at 6.55 o'clock when dial is set for alarm to operate at 7:00 o'clock. On repeat tests, the contacts should close at 6.55 plus or minus 3 minutes. At all other settings, the contacts should close within 12 minutes ahead or 2 minutes after the time for which dial is set.

## VIBRATOR ADJUSTMENT

1. Vibrator should start buzzing 10 minutes plus or minus 5 minutes after contacts close.
2. When the vibrator is in "Shut-off" position the shut-off spring should lift the vibrator sufficiently above the cam, so that the cam will not contact vibrator in any position.
3. Adjust vibrator for maximum sound.

## GENERAL

1. The alarm set knob should be sufficiently tight on the shaft to permit setting the alarm disc in a clockwise or counter-clockwise direction but should loosen if the cam is turned against the vibrator.
2. The switch knob should turn freely.
3. The alarm disc should not rub against the dial in any position. Prongs must be fully seated in the alarm set groove.
4. This clock-timer will operate satisfactorily only on the supply voltage and frequency as stamped on the name plate of the receiver and the clock.
5. If clock loses time or hands do not rotate, check clearance of time setting shaft from case back. This shaft must be allowed to rotate freely while clock is in operation.

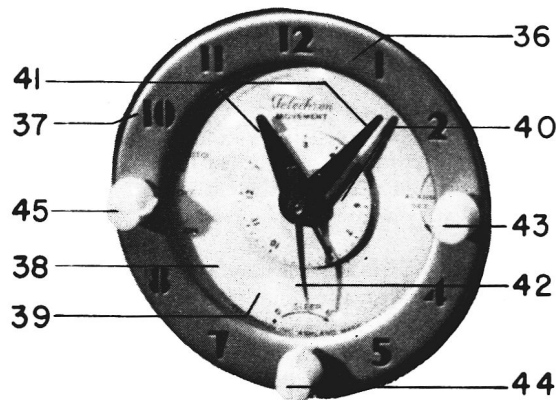


Fig. 1 Front View of Clock  
(See Parts List for Symbol No.)

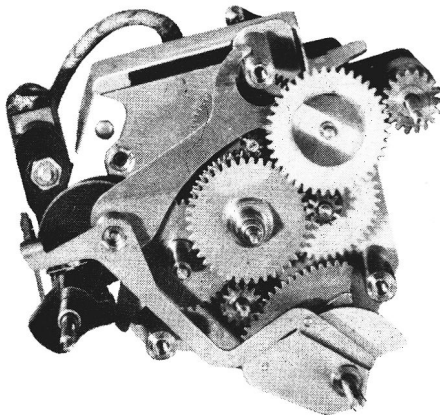


Fig. 2 Front View of Clock, Front Plate Removed

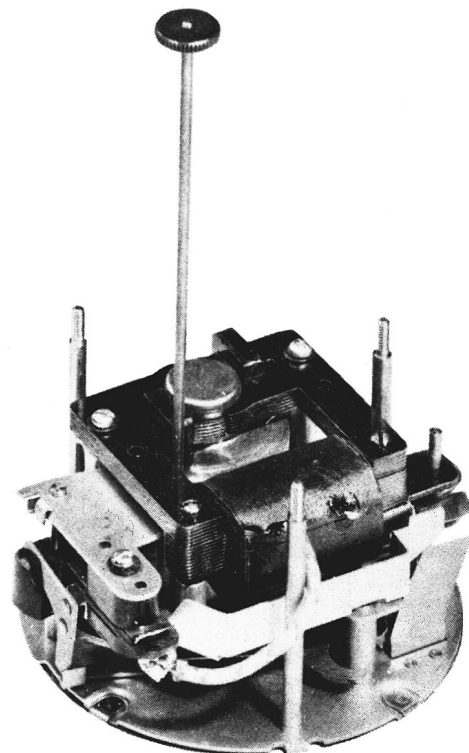
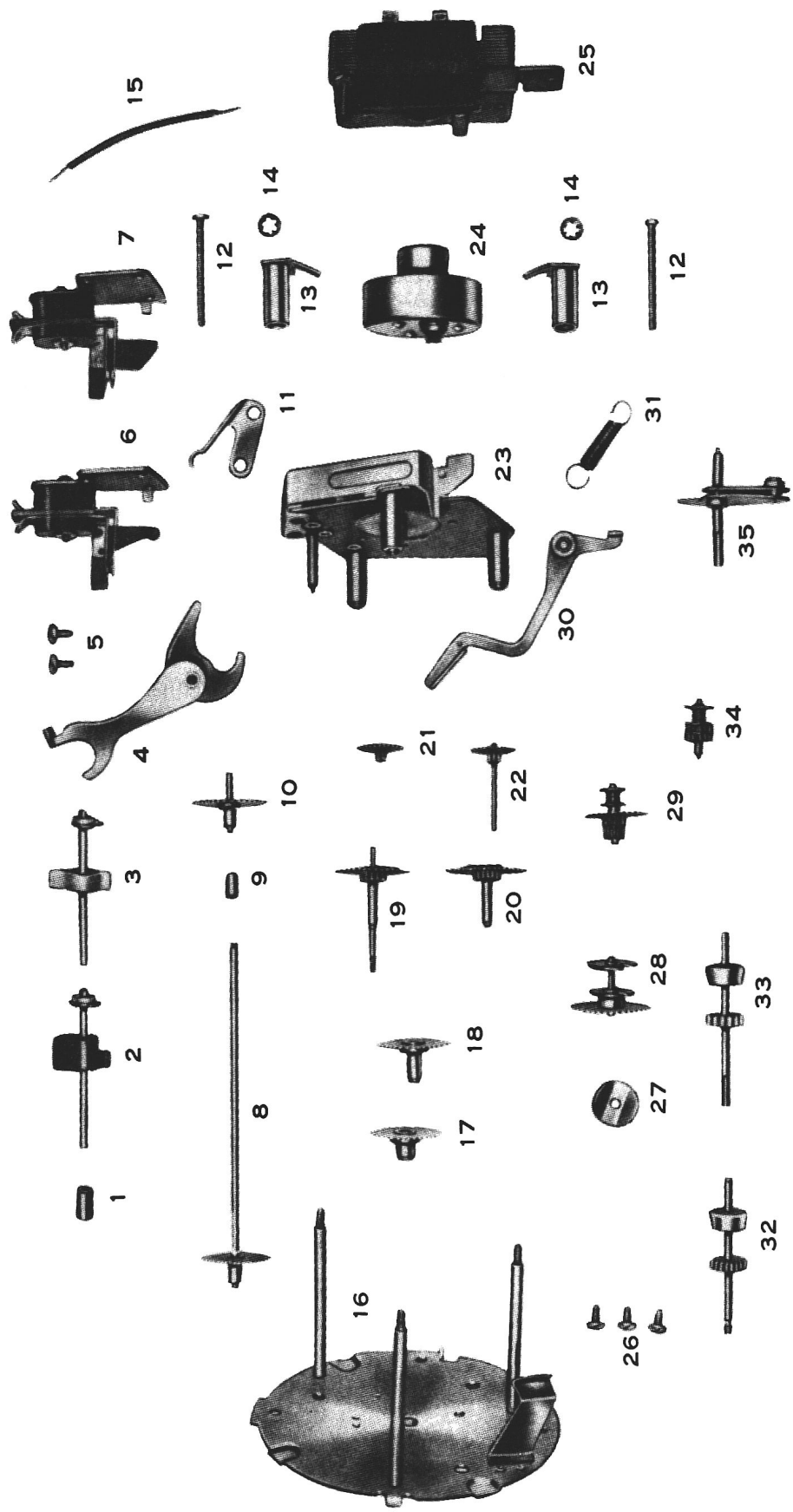


Fig. 3 Back View of Clock



EXPLODED MOVEMENT VIEW C57 TIMER  
FIG. 4  
(See Parts List For Symbol No.)

C57-G5  
C57-G10  
C57-G41

# REPLACEMENT PARTS LIST—C-57—Series G5, G10, G41 CLOCK TIMERS

SYMBOL NO.	STOCK NO.	PARTS DESCRIPTION	SYMBOL NO.	STOCK NO.	PARTS DESCRIPTION
1	S-5808	Switch Shaft Spacer	26	S-5801	Front Plate Screws
2	S-5807	" " with a black bakelite cam.	27	S-6435	Cam. Shaft Washer
3	S-6429	" " " " white nylon cam.	28	S-5791	" "
4	S-5806	" Lever	29	S-5797	Intermediate Shaft
5	S-5801	" Contact Screws	30	S-6127	Sleep Switch Lever
6	S-5804	" " for (S-5807)	31	S-6126	Booster Spring
7	S-6430	" " " (S-6429)	32	S-5789	Alarm Shaft (Threaded)
8	S-5809	Time Set Shaft	33	S-6120	" " (Slotted)
8	S-6431	" " "	34	S-6128	Sleep Switch Friction
9	S-5810	" " " Spacer	35	S-6104	" " Shaft
10	S-6432	" " Idler Gear	36	S-5778	Bezel - Numeral Gold
11	S-5805	Index Spring	36	S-6436	" " "
12	S-6124	Field Screw	37	S-5779	" Color Ring Maroon
13	S-5802	Spreader Post	38	S-5780	Crystal 2 9/16" round
14		#1204 Lockwasher	39	S-5781	Dial
15		Wire lead	39	S-6437	" "
16	S-5795	Front Plate Assembly for (S-5807)	40	S-5782	Alarm Disc.
16	S-6125	" " " " (S-6429)	40	S-6438	" "
17	S-5788	Alarm Set Sleeve	41	S-5783	Hour and Minute - Maroon
18	S-5796	Hour Hand Sleeve	41	S-6439	" " " - Luminous
19	S-6433	Minute Hand Shaft	42	S-5784	Sweep Second - Gold
20	S-5798	" " Sleeve	43	S-5785	Alarm Set - Ivory (Threaded)
21	S-6434	Sweep Second Gear	43	S-5786	" " " (Slotted)
22	S-5803	" " Hand Shaft	44	S-5786	Sleep Switch - Ivory
23	S-5790	Base Plate Assembly	45	S-5786	Radio Switch - Ivory
24	S-5799	Rotor Unit (60 cycle)	46	S-5786	Time Set - Bronze
24	S-5831	" " (50 cycle)		S-5993	Complete Clock-Timer (60 cycle)
24	S-5800	" " (25 cycle)		S-5995	" " " (25 cycle)
25	S-6121	Field and Coil (60 cycle)		S-6427	" " " (60 cycle)
25	S-6122	" " " (50 cycle)		S-6428	" " " (25 cycle)
25	S-6123	" " " (25 cycle)			

Only items listed under stock numbers are available as Replacement Parts.  
All parts subject to change or withdrawal without notice.