



RCA VICTOR

MODEL BP6A



PORTABLE 6 TUBE SINGLE BAND AC-DC SUPERHETERODYNE

TECHNICAL INFORMATION AND SERVICE DATA

1948 No. 11

GENERAL SERVICE DIVISION

RCA VICTOR COMPANY LTD.

Electrical and Mechanical Specifications

Frequency Range 540-1,600 kc

Intermediate Frequency 455 kc

Power Supply Rating

110 to 125 volts, AC 25 to 60 cycles, or DC.....18 watts

Batteries required

One Eveready Pack. No. 753

Tube Complement

- (1) RCA—1T4 R.F.
- (2) RCA—1R5 Converter
- (3) RCA—1T4 I.F. Amplifier
- (4) RCA—1U5 2nd Det. AVC. & A.F.-Amplifier
- (5) RCA—3V4 Power Output
- (6) RCA—117Z3 Rectifier

Current Consumption

Battery Operation....."A" 50 ma., "B" 13 ma.

Total Rect. Current (117 volt, 60 cycle) 61 ma.

Power Output

Undistorted 150 watt

Maximum 275 watt

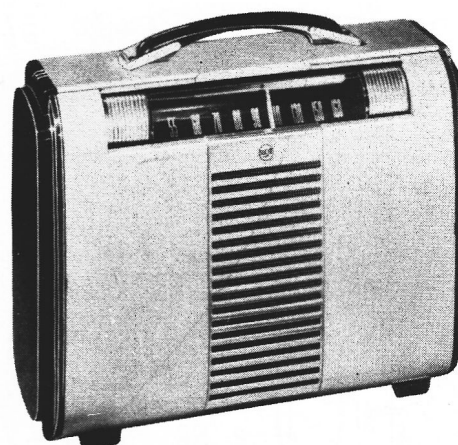
Loudspeaker..... 4 in. P.M. 3.4 ohms at 400 cycles

Cabinet Dimensions

Height...13¼ in. Width...9½ in. Depth...5½ in.

CAUTION —

1. Do not remove any tubes from the chassis with the set operating and the plug connected to the power line. Damage to tubes may result.
2. When cleaning the aluminum portion of the case use soap and water or cleaning fluid. Do not use abrasive cleansers.



(PHOTOGRAPH OF MODEL BP6)

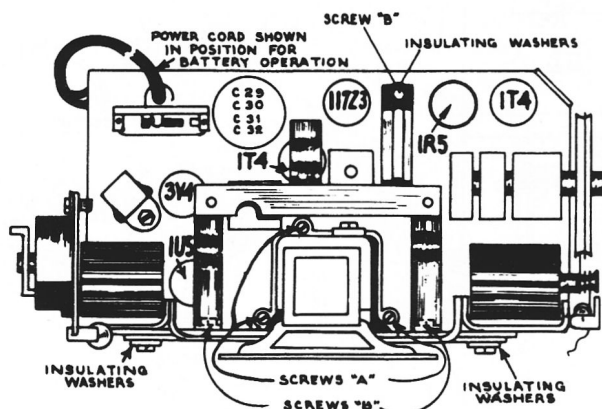
AC-DC Operation.—

This receiver will operate on 105 to 125 volts, AC 25 to 60 cycles, or DC.

A power cord is stored in the fiber tube which is clamped above the chassis inside the cabinet. To open the cabinet, push the wire latch on the bottom of the case to the right, and raise the back cover upward on its hinges. Then pull the power cord plug out of the socket on the top of the chassis as shown, and take out and unroll the power cord. A slot in the bottom of the cabinet allows the closing of the cabinet with the power cord passing through. Close the cabinet with the cord extending through the slot and insert the plug into a convenient electrical outlet.

When returning to battery operation, be sure to replace the power plug in its socket inside the case with the cord stored in the fiber tube.

NOTE. If reception is not obtained on DC, reverse plug in outlet receptacle. This may also reduce hum on AC operation.



Insulating Washers:

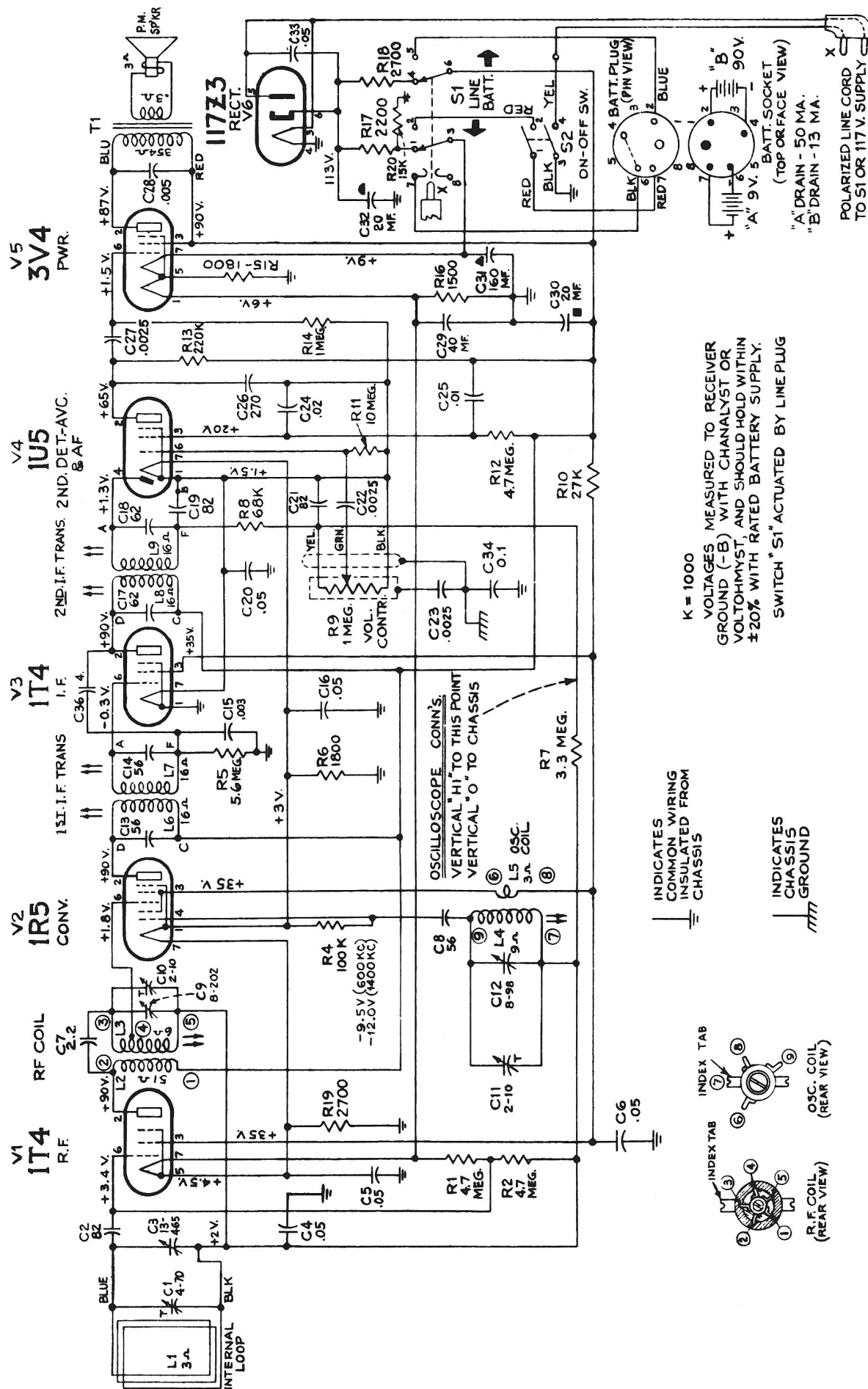
The mounting bracket and dial frame are insulated from the chassis with insulating washers. This serves to insulate the case from the chassis. In servicing make certain that these washers are in place and properly positioned.

To Remove Chassis from Cabinet:

1. Disconnect battery plug and remove battery.
2. Disconnect antenna in cabinet.
3. Remove the two screws in the top of the cabinet (beneath handle).
4. Remove the two battery clips.
5. Remove the chassis from the cabinet

To Remove Speaker:

1. Remove tubes 3V4 and 1U5.
2. Remove the three screws "B" holding power cord bracket assembly and remove bracket.
3. Remove the three screws "A" holding speaker bracket assembly.
4. Disconnect voice coil leads.
5. The speaker and speaker bracket may now be removed.



SCHEMATIC DIAGRAM