

MODEL 9JY

For Record Changer Service Information—Refer to RP168 Series Service Note.

Electrical and Mechanical Specifications

MODELS 9JY & 9EY3 (Record Changer RP-168-1)

Turntable speed ----- 45 R.P.M.

Records used ----- Long playing—7 in.

Record capacity -----8 Records

Pickup -----Crystal (Medium output)

POWER SUPPLY RATING	9JY	9EY3
---------------------	-----	------

115 Volts, 25 or 60 cycles A.C. -----	15 watts	45 watts
---------------------------------------	----------	----------

TUBE COMPLEMENT (9EY3 only)

1) Type 12AV6 ----- Amplifier

2) Type 50C5 ----- Output

3) Type 35W4 ----- Rectifier

LOUDSPEAKER (9EY3 only)

Size and Type ----- 4 in. P.M.

Voice coil impedance -----3.20 ohms at 400 cycles

POWER OUTPUT (9EY3 only)

Undistorted ----- 1.0 watt

Maximum -----1.25 watts

DIMENSIONS (Overall)	Height	Width	Depth
----------------------	--------	-------	-------

9JY ----- $6\frac{5}{8}"$ $9\frac{1}{8}"$ $6\frac{7}{8}"$

9EY3	75 ⁵ / ₈ "	91 ¹ / ₁₆ "	95 ⁵ / ₈ "
------	----------------------------------	-----------------------------------	----------------------------------



MODEL 9EY3

Record Separator

In the out of cycle position the record separator knives or discs are normally concealed inside the center post. During service, the position of the star wheel on the underside of the record changer may be accidentally shifted; this may cause the separator knives to be extended when they should be concealed.

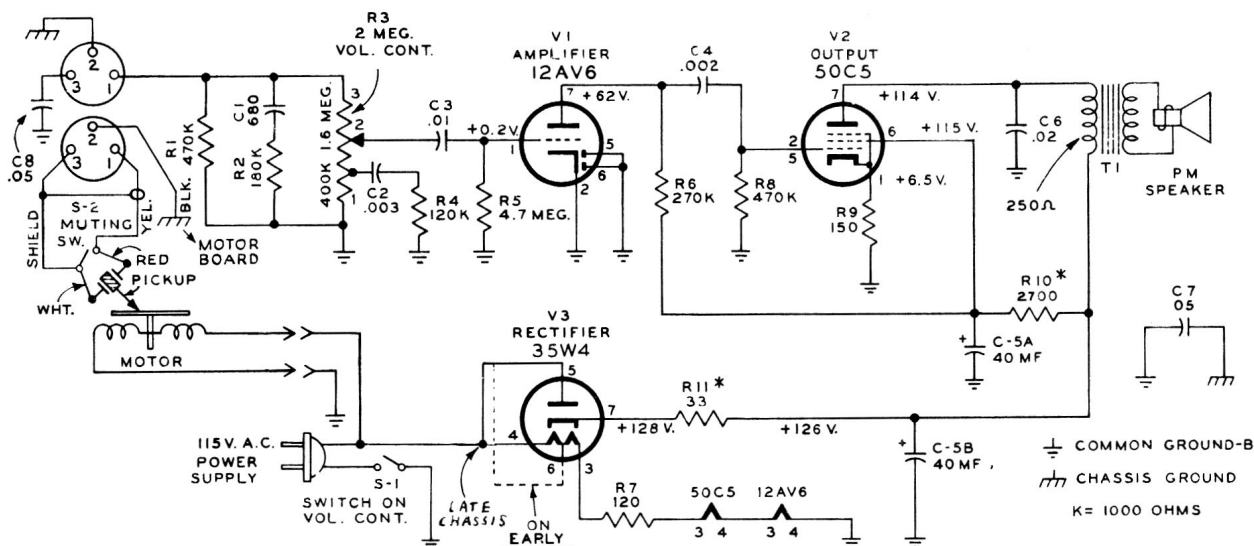
If the separator knives are thus extended—turn the power on so that the turntable is revolving, gently press fingers against the extended knives until they disappear inside the center post—DO THIS ONLY WHILE MECHANISM IS OUT OF CYCLE.

REPLACEMENT PARTS FOR MODELS 9JY & 9EY3

Insist on Genuine Factory Tested Parts, which are readily identified and may be purchased from Authorized Dealers

STOCK NO.	DESCRIPTION	LIST PRICE	STOCK NO.	DESCRIPTION	LIST PRICE
Amplifier Chassis Assembly 9EY3			Miscellaneous Assembly		
39648	Capacitor 680 MMF 10%, 300 V. Mica (C1)		S-5035	Base - cabinet base (9JY)	
	" .003 Mfd. 10%, 200 V. (C2)		S-4990	" " " (9EY3)	
	" .002 " 40%, 400 V. (C4)		S-5037	Baffle	
	" .05 " 40%, 400 V. (C7-C8)		S-5002	Button - push button (9JY)	
	" .02 " 10%, 400 V. (C6)		74138	" " " ass'y (9EY3)	
	" .01 " 20%, 200 V. (C5)		S-4992	Bracket & shaft assembly (9EY3)	
S-4995	" - Electrolytic 80 - 40 - Mfd. (C5A-B)		S-4989	Cabinet (9EY3)	
S-4996	Resistor - 120 ohms 5 watt (R7)		S-5001	" (9JY)	
	" - 150 " $\frac{1}{2}$ " (R9) 10%		S-5036	Cable - pickup cable	
	" -2700 " $\frac{1}{2}$ " 10% (R10)		S-5039	Cable - 2 pin plug & cable assy	
	" -120,000 ohms $\frac{1}{2}$ watt 10% (R4)		S-5038	Cord - power cord (9EY3)	
	" -180,000 " $\frac{1}{2}$ " 10% (R2)		31051	Foot - rubber foot (pkg. 2)	
	" -270,000 " $\frac{1}{2}$ " 10% (R6)		S-4991	Knob - volume control	
	" -470,000 " $\frac{1}{2}$ " 20% (R1-R8)		S-5034	Monogram - RCA Victor	
	" -4.7 Megohms $\frac{1}{2}$ " 20% (R5)		74192	Plug - pickup cable plug (3 pin)	
73117	Socket - tube socket		30868	" - 2 pin plug (female) for motor cable	
S-4994	Volume Control (9EY3) (R3-S1)		30870	" - 2 " " (male)	
S-5003	" " (9JY)		14270	Spring - knob retaining spring (Pkg. 2)	
Speaker Assembly - 4" PM			Automatic Record Changer Mechanism		
S-3556	Dust Cap (Pkg. 3)		Refer to RP 168 Series Service Note for replacement parts & service data.		
S-4330	Cone - cone & voices coil assy				
S-5033	Output Transformer (TI)				

All Prices and Parts are subject to change or withdrawal without notice.



VOLTAGES MEASURED TO COMMON WIRING WITH "VOLTOHMYST" — SHOULD HOLD WITHIN $\pm 20\%$
* IN SOME CHASSIS R10 IS 5600 OHMS, R11 IS NOT USED, RECTIFIER CIRCUIT AS SHOWN BY DOTTED LINE
FIG. 1 SCHEMATIC DIAGRAM (9EY3)

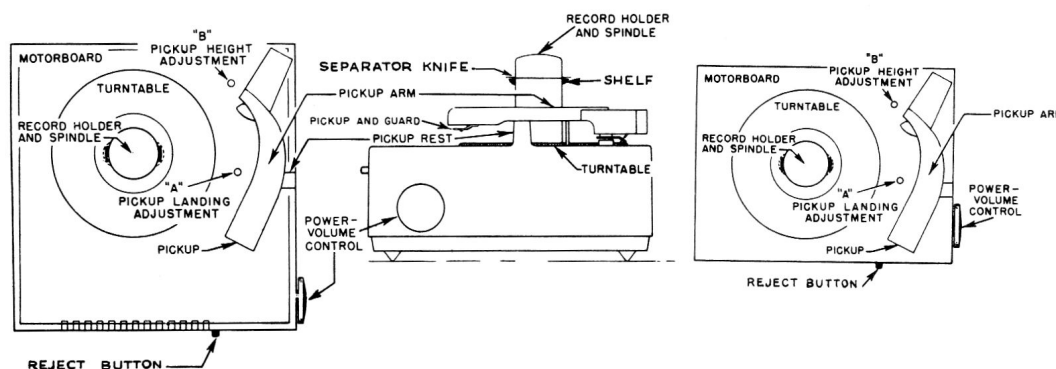


FIG. 2 TOP VIEW (9EY3)

FIG. 3 SIDE VIEW (9EY3)

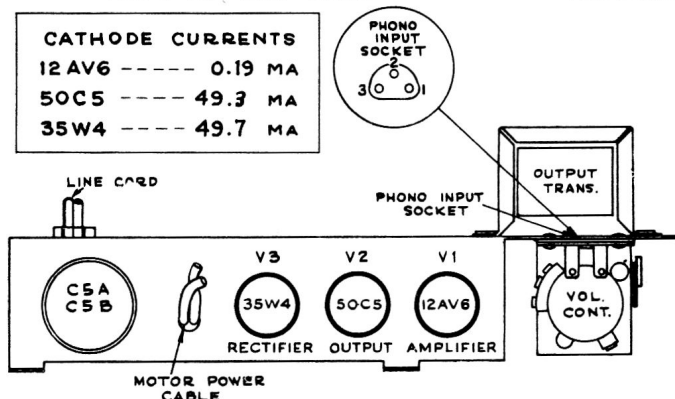


FIG. 5 CHASSIS LAYOUT (9EY3)

Pickup Landing Adjustment "A"

The pickup point should land half-way between the outer edge of the record and the first music groove.

If the pickup lands inside the starting grooves—turn screw "A" slightly clockwise. If pickup lands outside the starting grooves—turn screw "A" slightly counterclockwise.

Pickup Height Adjustment "B"

During cycle the pickup arm must rise high enough to clear a stack of eight records on the turntable, but not high enough to cause the top of the arm to touch records resting on the record supports.

If pickup does not clear a stack of eight records—turn screw "B" slightly clockwise. If pickup arm touches records on record supports—turn screw "B" slightly counterclockwise.

Record Changer Mounting

The cabinet is used as the motor board of the record changer. The record changer is attached to the cabinet with three screws, grommets and spacers. THE PICKUP ARM MUST BE REMOVED BEFORE THE RECORD

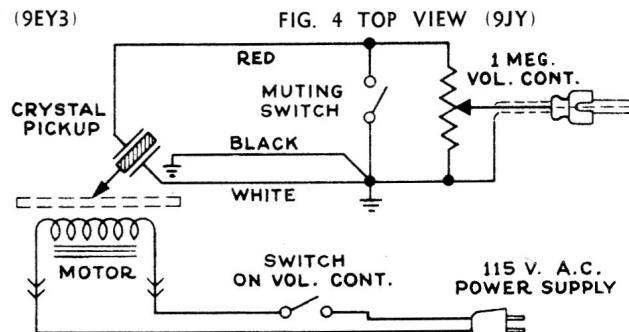


FIG. 6 SCHEMATIC DIAGRAM (9JY)

CHANGER CAN BE REMOVED—REFER TO RP-168 SERIES SERVICE DATA.

To Remove Chassis (9EY3)

Remove the four screws at the corners of the bottom cover, separate the motor power plug and socket and remove the pickup cable from its socket on the amplifier chassis.

Elongated holes permit the speaker position to be adjusted. If the speaker should be replaced or its mounting bracket loosened, the speaker mounting bracket screws should not be tightened until after the bottom cover is assembled to the cabinet.

RCA TYPE S-5097 RECORD PLAYER SELECTOR

When two record attachments are used in conjunction with one receiver, it is necessary to have some means of switching from one record attachment to the other. Switch S-5097 has been designed to simplify this switching operation.

Refer to the Model VA34 Service Note (Switch and Pickup Data) for information on connecting the Model 9JY record player to radio receivers not equipped with phono input sockets.