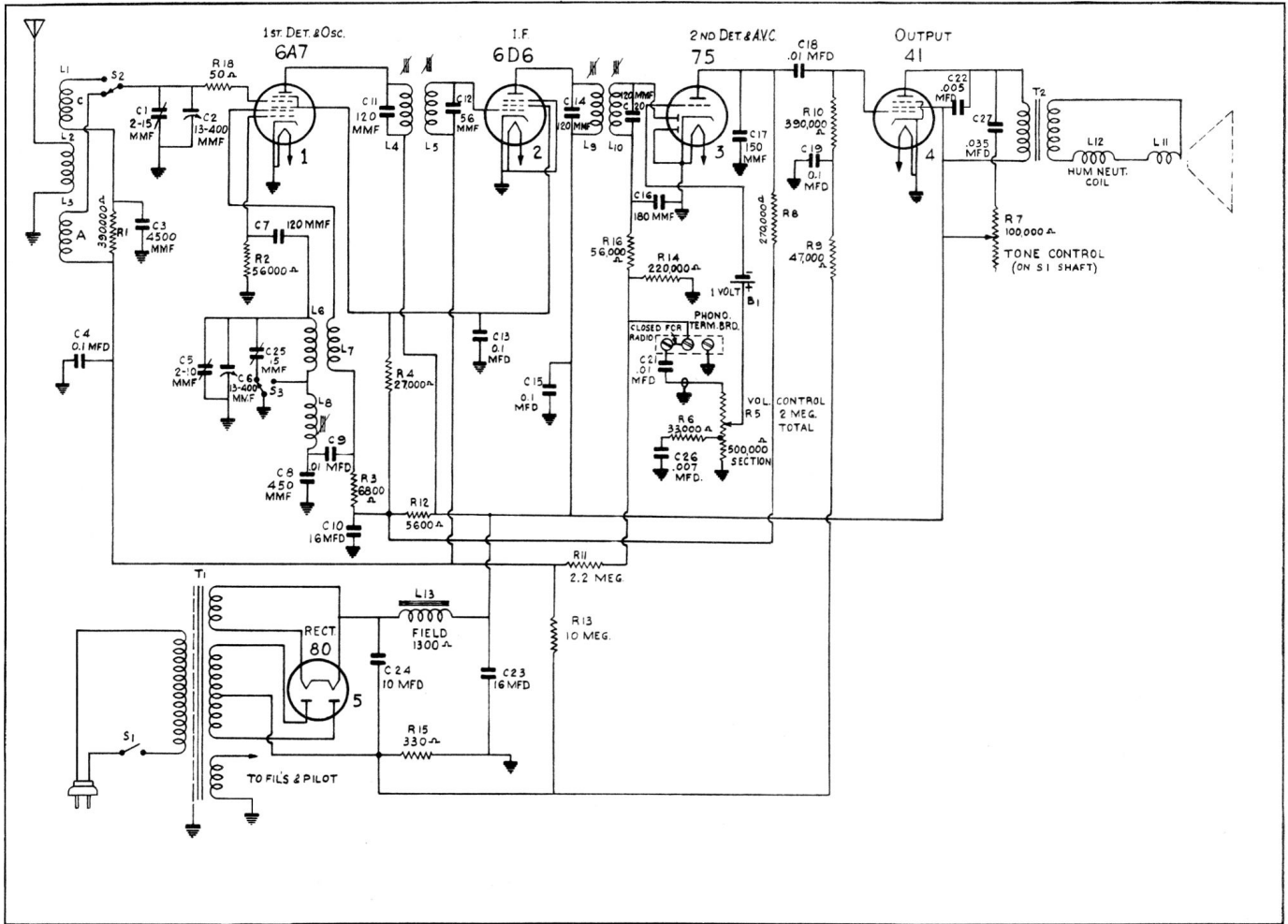


Models 85T-2, 85TA, 85K & 85KA A.C. Receivers Models U-101, U-102 & U-103 RCA Victrolas



Schematic Circuit Diagram

| Order of Alignment | Test Oscillator | | | Range-Selector | Receiver Dial Setting | Circuit to Adjust | Adjustment Symbols | Adjust to Obtain |
|--------------------|------------------------|---------------|-------------------|----------------|---------------------------|-------------------|--------------------|------------------|
| | Connection to Receiver | Dummy Antenna | Frequency Setting | | | | | |
| 1 | 6D6 I-F Grid Cap | .001 Mfd. | 460 kc | "A" Left | No Signal 550-750 kc | 2nd I-F Trans. | L9 and L10 | Max. (peak) |
| 2 | 6A7 Det. Grid Cap | .001 Mfd. | 460 kc | "A" Left | No Signal 550-750 kc | 1st I-F Trans. | L4 and L5 | Max. (peak) |
| 3 | Ant. Lead | 300 Ohms | 15,000 kc | "C" Right | 15,000 kc | "C" Osc. | C5 | Max. (peak)† |
| 4 | Ant. Lead | 300 Ohms | 15,000 kc | "C" Right | Rock Through 15,000 kc | "C" Ant. | C1 | Max. (peak)* ‡ |
| 5 | Ant. Lead | 200 Mmfd. | 600 kc | "A" Left | 600 kc | "A" Osc. | L8 | Max. (peak) |

† Use maximum capacity peak if two peaks can be obtained.

* Use minimum capacity peak if two peaks can be obtained.

‡ After this adjustment, check for image signal by shifting receiver dial to 15,920 kc.