

# RCA VICTOR



Automatic Record Player

## Model 7-EY-1 Series

# SERVICE DATA

— 1956 No. 16 —

ISSUED BY

GENERAL SERVICE DEPARTMENT  
RCA VICTOR COMPANY, LTD.  
MONTREAL, CANADA

*Model 7-EY-1JF*  
*Charcoal Gray Cabinet with Coral Grille*

*Model 7-EY-1DJ*  
*Black Cabinet with Pearl Gray Grille*

*Model 7-EY-1EF*  
*Antique White Cabinet with Flame Red Grille*

### ELECTRICAL & MECHANICAL SPECIFICATIONS

#### Tube Complement

RCA 25L6-GT ..... A.F. Amplifier  
A selenium rectifier is used.

#### Loudspeaker

Size and type ..... 4" P.M.  
Voice coil impedance ..... 3.2 ohms at 400 cycles

#### Dimensions (over-all)

Height, 7¼"      Width, 11¾"      Depth, 11"

Weight ..... 8¼ lbs. net

#### Power Supply Rating

115 volts, 60 cycles A.C. .... 45 watts

#### Power Output

Undistorted ..... 1 watt      Maximum ..... 1.5 watts

#### Record Changer (RP-190D-1)

Turntable speed ..... 45 r.p.m.  
Records used ..... RCA-Type 7-inch fine groove  
Record capacity ..... Up to 14 records  
Pickup (Stock No. S-21801) ..... Crystal (medium output)

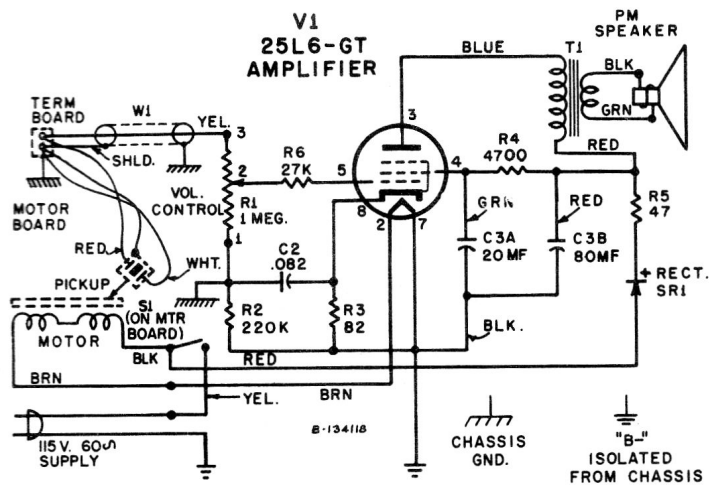
### REPLACEMENT PARTS

SYMBOL NO.	STOCK NO.	DESCRIPTION	SYMBOL NO.	STOCK NO.	DESCRIPTION
		<b>AMPLIFIER ASSEMBLY</b> RS-155			<b>MISCELLANEOUS</b>
C2		Capacitor—Fixed, paper, 0.082 mf., ±10%, 400 v.	Y2876		Cabinet—Polystyrene cabinet—black—with pearl gray grille—for Model 7EY1DJ
C3A, C3B	79823	Capacitor—Electrolytic, 20/80 mf., -10 +100%, 150 v.	Y2877		Cabinet—Polystyrene cabinet—antique white—with flame red grille—for Model 7EY1EF
R1	101594	Control—Volume control	Y2875		Cabinet—Polystyrene cabinet—charcoal—with coral grille—for Model 7EY1JF
R2		Resistor—Fixed, composition, 220,000 ohms, ±20%, ½ w.	101598		Cover—Cabinet bottom cover assembly with feet
R3		Resistor—Fixed, composition, 82 ohms, ±10%, ½ w.	75950		Eyelet—Metal eyelet for mounting record changer (3 req'd)
R4		Resistor—Fixed, composition, 4700 ohms, ±10%, ½ w.	75697		Grommet—Rubber grommet for mounting record changer (3 req'd)
R5		Resistor—Fixed, composition, 47 ohms, ±10%, 1 w.	101596		Knob—Volume control knob with spring—black—for Model 7EY1DJ
R6		Resistor—Fixed, composition, 27,000 ohms, ±10%, ½ w.	101597		Knob—Volume control knob with spring—antique white—for Model 7EY1EF
S1		Part of Record Changer	101595		Knob—Volume control knob with spring—charcoal—for Model 7EY1JF
SR1	77958	Rectifier—Selenium rectifier	100162		Monogram—RCA trademark monogram
T1	77993	Transformer—Output transformer	74734		Spring—Control knob retaining spring
	70392	Cord—AC power cord and plug			
	70827	Socket—Tube Socket, 8 pin octal			
		<b>SPEAKER ASSEMBLY</b>			
	79696	Speaker—4" P.M. speaker complete with cone and voice coil (3.2 ohms)			

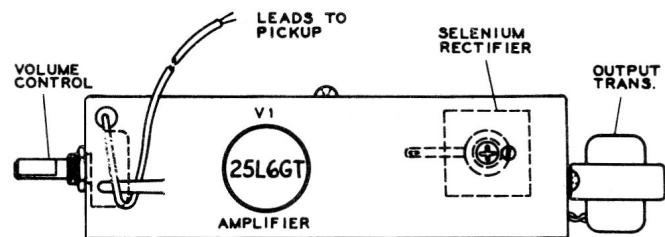
Only items listed under stock numbers are available as Replacement Parts.

All parts subject to change or withdrawal without notice.

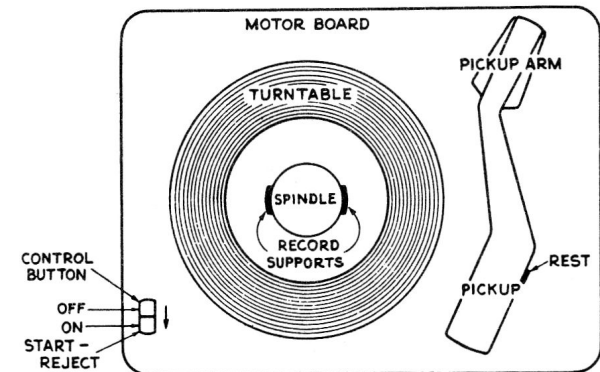




Schematic Diagram



Chassis Assembly (Top View)



Record Changer Controls

Pickup Height Adjustment

Adjust knurled nut "A" until the distance (during change cycle) between the top of the turntable and the stylus point is approximately 1 1/8".

Pickup Landing Adjustment

Adjust the screw driver landing adjustment stud "B" so the stylus lands 2 3/4" ± 1/64" from the side of the center post.

Tripping Adjustment

Adjust the eccentric tripping stud "C" until the mechanism trips when the stylus is 1-9/32" from the side of the center post.

Stop Dog Adjustment

Turn the eccentric screw "E" until the record drops to the turntable without striking the pickup arm.

Critical Lead Dress

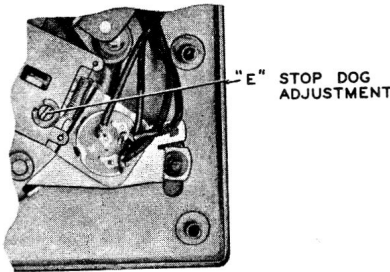
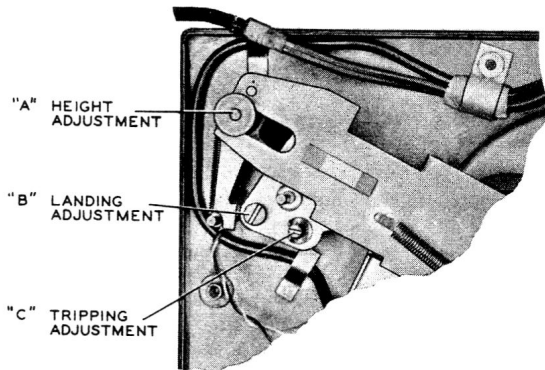
1. Dress all leads away from R5 and SR1.
2. Dress filament leads down to chassis.

FOR RECORD CHANGER SERVICE INFORMATION—REFER TO RP-190 SERIES SERVICE DATA.

RP-190D-1 RECORD CHANGER

This record changer is the same as RP-190B-5 record changer except for color of parts and voltage of motor. Replacement parts are identical to those previously listed for RP-190B-5 except for the following items:

RECORD CHANGER ILLUSTR. NO.	STOCK NO.	DESCRIPTION OF PART USED IN RP-190D-1
7	101685	Knob—Control knob—antique white
9	101690	Motorboard—Motorboard subassembly with welded and/or staked studs and pickup rest—satin gold enamel
14	101684	Cap—Spindle nose cap—antique white
24	101692	Arm—Pickup arm shell only—antique white
48	101694	Motor—95 volt, 60 cycle, 300 ma. motor



Record Changer Adjustments