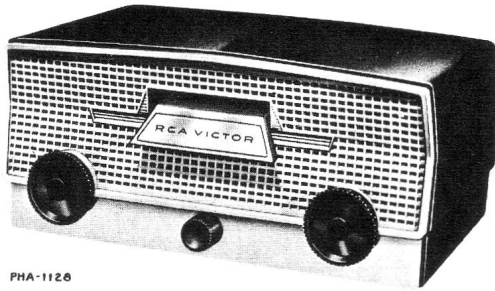




RCA VICTOR



PHA-1126

*Model 6-XY-5A
Black with Gray Grille
Model 6-XY-5B
White with Green Grille*

**FOR RECORD PLAYER MECHANISM SERVICE
INFORMATION—REFER TO RP-199 SERVICE
DATA AND REPLACEMENT PARTS LIST**

Radio-Phonograph Combination MODELS 6-XY-5A, 6-XY-5B

Chassis No. RC-1152
Record Player Mechanism RP-199-2

SERVICE DATA

— 1956 No. 3 —

ISSUED BY
GENERAL SERVICE DEPARTMENT
RCA VICTOR COMPANY, LTD.
MONTREAL, CANADA

SPECIFICATIONS

TUNING RANGE540-1600 kc

INTERMEDIATE FREQUENCY455 kc

TUBE COMPLEMENT

1. RCA 12BE6Converter
2. RCA 12BA6I. F. Amplifier
3. RCA 12AV6Det.-AVC-A.F. Amp.
4. RCA 50C5Output
5. RCA 35W4Rectifier

POWER SUPPLY RATING

115 volts, 60 cycles A.C.45 watts

POWER OUTPUT

Undistorted1.0 watt
Maximum1.4 watt

SPEAKER

Size and Type4" P.M.

Voice coil impedance3.2 ohms @ 400 cps

RECORD PLAYER

Record capacityOne record (7-inch—45 r.p.m.)

Pickup (Stock No. 74067)Crystal (medium output)

TUNING DRIVE RATIO1:1 (direct drive)

DIMENSIONS (Overall)

Height.....5 $\frac{3}{8}$ " Width.....12 $\frac{1}{4}$ " Depth.....8 $\frac{1}{2}$ "

WEIGHT (net)7 $\frac{1}{2}$ lbs.

DESCRIPTION

Model 6-XY-5 is a five-tube (including rectifier) radio and "Slide-O-Matic" record player combination. The radio chassis has the five tubes and the two I-F transformers mounted horizontally at the rear of the chassis. This is done to make a very compact unit.

The plastic cabinet is a one-piece molding and is available in either black or white. A contrasting grille color is used. The grille and record playing mechanism are both mounted

on the radio chassis enabling it to be removed from the cabinet as one unit after removal of four screws at the underside of the cabinet. A switch actuated by the volume control knob controls application of power to both the radio and the record player. The record player mechanism also incorporates an automatic shut-off switch to control only the power applied to the motor.

RECORD PLAYER OPERATION

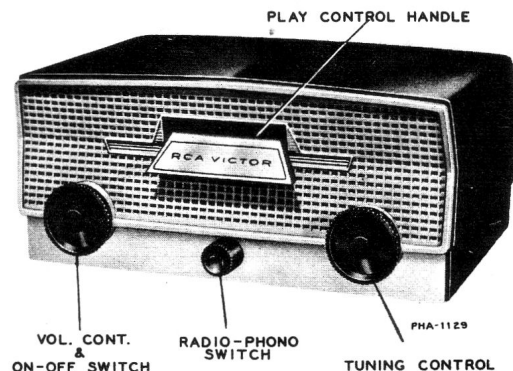
To operate, slide a record into the slot with the desired selection facing up. Lift up on the handle until it latches. Lifting up on the handle will:

1. Center the record on the turntable.
2. Actuate the switch and energize the motor.
3. Bring the record in contact with the pickup stylus.

When the record has finished playing, the mechanism will.

1. Unlatch the handle and allow it to lower for removal of record.
2. Shut off the power to the motor.
3. Return the pickup arm to the starting position.

Record player operation can be stopped at any time by pushing inward on the play control handle.



Alignment Procedure

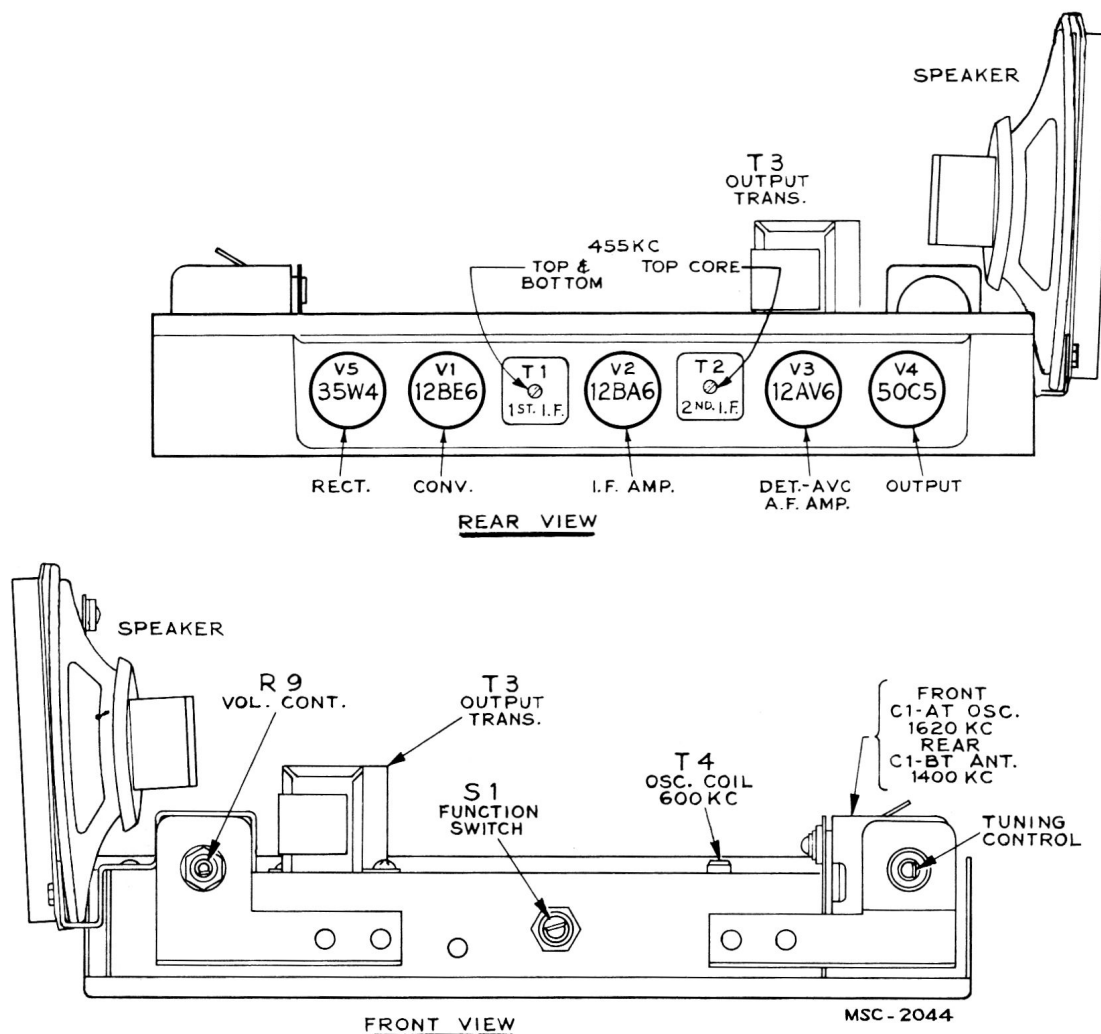
Output Meter—Connect meter across speaker voice coil. Turn volume control to maximum.

Test Oscillator—Connect low side of test oscillator to common wiring in series with a .1 mf. capacitor. If the test oscillator is a.c. operated it may be necessary to use an isolation transformer for the receiver during alignment and the low side of the test oscillator connected directly to common wiring at the electrolytic capacitor. Keep the oscillator output low to prevent a-v-c action.

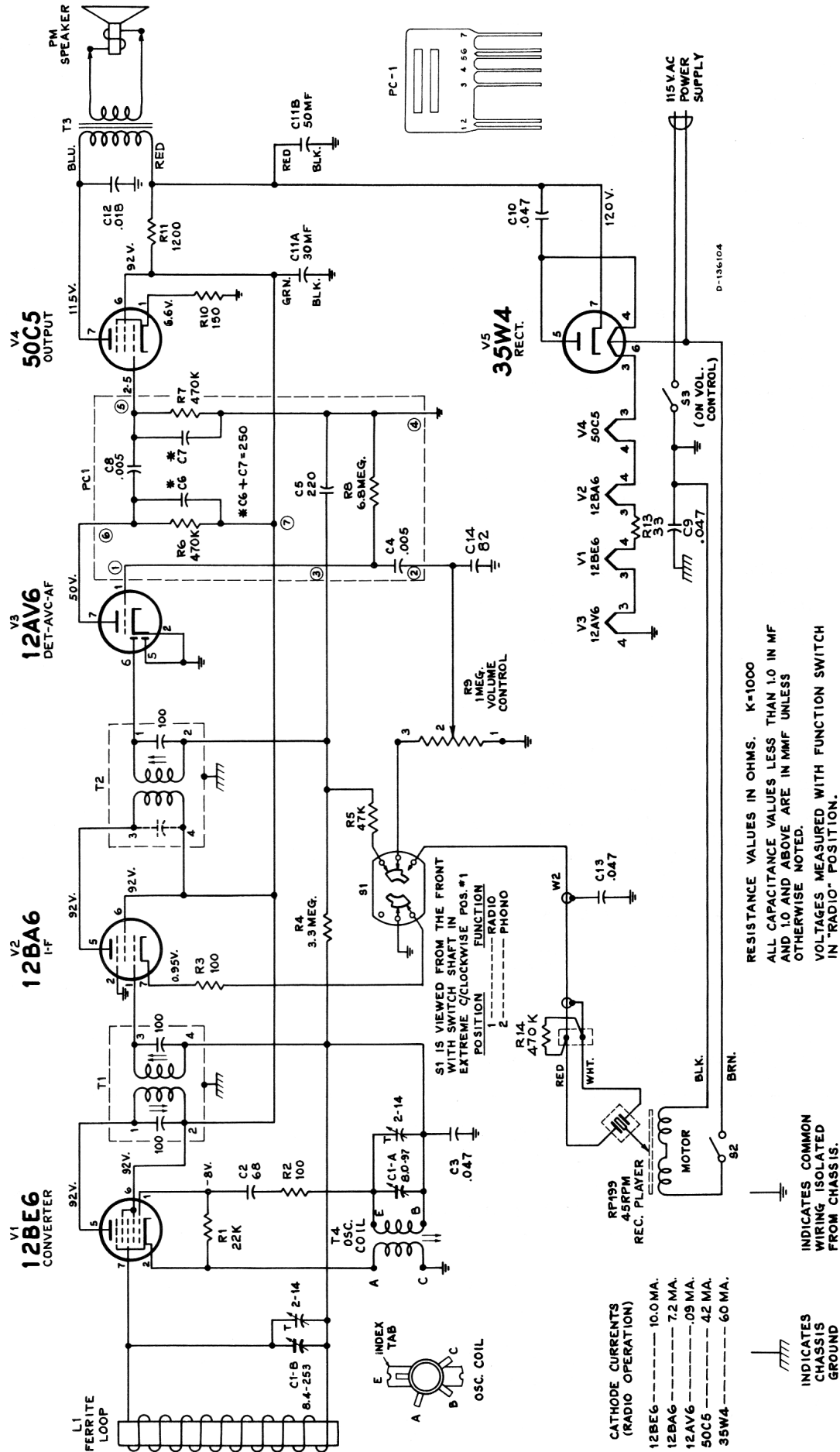
LEAD DRESS

1. Dress all circuit wiring against chassis.
2. Dress printed circuit unit (PC-1) away from I.F. circuits and chassis.
3. Dress R12 away from chassis and C10.

Steps	Connect the high side of test osc. to—	Tune test-osc. to—	Turn radio dial to—	Adjust the following for max. output
1	Pin #1 of 12BA6, in series with .01 mfd.	455 kc	Quiet point 1,600 kc end of dial	Sec. core 2nd I.F. transformer
2	Pin #7 of 12BE6 in series with .01 mfd.			Pri. & Sec. 1st I.F. transformer
NOTE—RECORD PLAYER MECHANISM AND GRILLE MUST BE MOUNTED ON CHASSIS FOR THE FOLLOWING				
3	Short wire placed near loop for radiated signal	1,620 kc	Extreme c/clockwise (gang open)	C1-A trimmer (osc.)
4		1,400 kc	1,400 kc signal	C1-B trimmer (ant.)
5		600 kc	600 kc signal Rock gang	Osc. Coil T4
6		Repeat steps 3, 4, & 5 if necessary		



Tube and Trimmer Locations



REPLACEMENT PARTS

SYMBOL NO.	STOCK NO.	DESCRIPTION	SYMBOL NO.	STOCK NO.	DESCRIPTION
		CHASSIS ASSEMBLY RC-1152			
C1A, C1B	101551	Capacitor—Variable tuning capacitor		101547	Insulator—Laminated phenolic insulator for variable tuning capacitor. (3 req'd)
C2	39624	Capacitor—Fixed, mica, 68 mmf., $\pm 20\%$, 500 v.		101375	Socket—Tube socket, 7 pin miniature for V4 & V5.
C3	73553	Capacitor—Fixed, paper, 0.047 mfd., $\pm 20\%$, 400 v.		73117	Socket—Tube socket, 7 pin miniature for V1 to V3 Incl.
C4 to C8 Incl.	—	Part of PC1		73131	Washer—Insulating washer, extruded, for tuning capacitor.
C9	73553	Same as C3			SPEAKER ASSEMBLY 972308-1
C10	75071	Capacitor—Fixed, moulded paper, 0.047 mfd., $\pm 20\%$, 400 v.		79696	Speaker—4" P.M. speaker complete with cone & voice coil (3.2 ohms)
C11A, C11B	76718	Capacitor—Fixed, electrolytic, 30/50 mmf., -10% , $+100\%$, 150 v.			MISCELLANEOUS
C12	100115	Capacitor—Fixed, paper, 0.018 mfd., $\pm 10\%$, 400 v.		101675	Baffle—Speaker baffle assembly with grille cloth—BLACK, for Model 6XY5A
C13	73553	Same as C3		101676	Baffle—Speaker baffle assembly with grille cloth—WHITE, for Model 6XY5B
C14	101836	Capacitor—Fixed, ceramic, 82 mmf., $\pm 10\%$, 500 v.		Y2871	Cabinet—Plastic cabinet—BLACK, for Model 6XY5A
L1	100086	Antenna—Ferrite antenna rod assembly		Y2872	Cabinet—Plastic cabinet—WHITE for Model 6XY5B
PC1	79058	Printed Circuit—Includes C4, C5, C6, C7, C8, R6, R7 and R8		100211	Connector—Closed end connector for motor lead.
R1	502322	Resistor—Fixed, composition, 22,000 ohms, $\pm 20\%$, $\frac{1}{2}$ w.		101548	Grille—Plastic grille for cabinet—GRAY—for Model 6XY5A
R2, R3	502110	Resistor—Fixed, composition, 100 ohms, $\pm 20\%$, $\frac{1}{2}$ w.		101549	Grille—Plastic grille for cabinet—GREEN—for Model 6XY5B
R4	502533	Resistor—Fixed, composition, 3.3 meg-ohm, $\pm 20\%$, $\frac{1}{2}$ w.		101555	Knob—Volume control knob—with spring—BLACK—for 6XY5A
R5	502347	Resistor—Fixed, composition, 47,000 ohms, $\pm 20\%$, $\frac{1}{2}$ w.		101556	Knob—Tuning control knob—with spring—BLACK—for Model 6XY5A
R6 to R8 Incl.	—	Part of PC1		101559	Knob—Radio/phono switch control knob—with spring—BLACK—for Model 6XY5A
R9	101550	Control—Volume control and "On-Off" switch (S3)		101557	Knob—Volume control knob—with spring—WHITE—for Model 6XY5B
R10	502115	Resistor—Fixed, composition, 150 ohms, $\pm 10\%$, $\frac{1}{2}$ w.		101558	Knob—Tuning control knob—with spring—WHITE—for Model 6XY5B
R11	512212	Resistor—Fixed, composition, 1200 ohms, $\pm 10\%$, 1 w.		101560	Knob—Radio/phono switch control knob—with spring—WHITE—for Model 6XY5B
R13	512033	Resistor—Fixed, composition, 33 ohms, $\pm 20\%$, 1 w.		101562	Retainer—Spring nut, retainer for ferrite antenna rod mounting grommet (2 req'd)
R14	502447	Resistor—Fixed, composition, 470,000 ohms, $\pm 20\%$, $\frac{1}{2}$ w.		101561	Shield—Metal shield for tuning capacitor shaft
S1	101553	Switch—Radio-phono transfer switch		101563	Shield—Heat shield—between chassis & record player mechanism
S2	101247	Part of Record Playing Mechanism		101602	Sleeve—Rubber insulating sleeve for antenna rod (2 req'd)
S3	—	Part of R9		74734	Spring—Spring clip, retainer for control knobs
T1	75486	Transformer—1st I.F. transformer			
T2	77994	Transformer—2nd I. F. transformer			
T3	77993	Transformer—Output transformer			
T4	79285	Coil—Oscillator coil			
	73935	Clip—I.F. transformer mounting clip			
	70392	Cord—A.C. power cord & plug			
	100270	Grommet—Strain relief for power cord. (1 set)			

RECORD PLAYING MECHANISM

MODEL RP-199-2 RECORD PLAYING MECHANISM IS IDENTICAL TO MODEL RP-199-1 DESCRIBED IN "MODEL RP-199" SERVICE DATA EXCEPT FOR THE FOLLOWING:

Item No.	Description	RP-199-1 Stock No.	RP-199-2 Stock No.
24	Plate (top)	100208	101249
42	Switch	100185	101247
46	Plate (bottom)	100209	101248

APPLY TO YOUR RCA DISTRIBUTOR FOR PRICES OF REPLACEMENT PARTS.