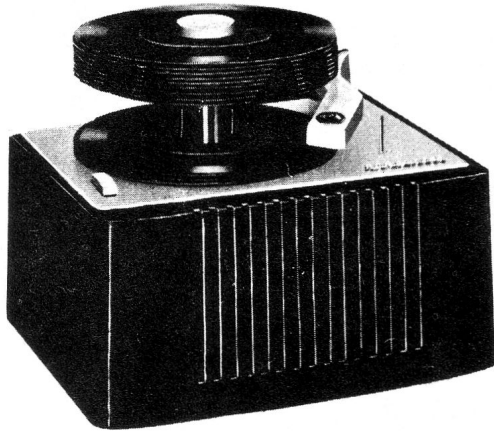




RCA VICTOR



Automatic Record Player

Model 6-EY-1

SERVICE DATA

—1955 No. 11—

ISSUED BY

GENERAL SERVICE DEPARTMENT
RCA VICTOR COMPANY, LTD.
MONTREAL, CANADA

FOR RECORD CHANGER SERVICE INFORMATION —
REFER TO RP-190 SERIES SERVICE DATA.

Specifications

Tube Complement

1. RCA 12AV6 Amplifier
2. RCA 50C5 Power amp. (Output)
3. RCA 35W4 Rectifier

Loudspeaker

- Size and type 4"x6" P.M.
Voice coil impedance 3.2 ohms at 400 cycles

Power Supply Rating

115 volts, 60 cycles A.C. 50 watts

Power Output

Undistorted 1.2 watts Maximum 1.5 watts

Dimensions (over-all)

Height, 8½" Width, 11" Depth, 8⅞"

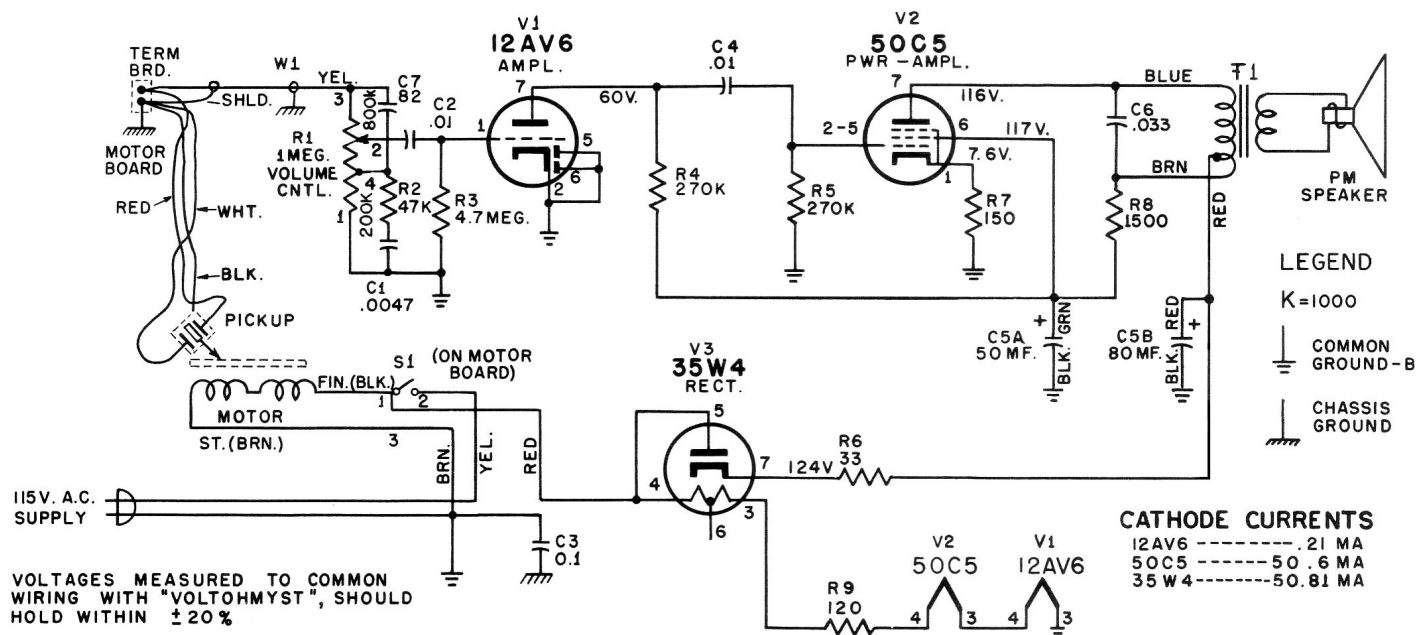
Record Changer (RP190B-1)

Turntable speed 45 r.p.m.
Records used RCA-Type 7-inch fine groove
Record capacity up to 14 records
Pickup (Stock No. 74067) Crystal (medium output)

Replacement Parts List For Model 6-EY-1

SYMBOL NO.	STOCK NO.	DESCRIPTION	SYMBOL NO.	STOCK NO.	DESCRIPTION
AMPLIFIER ASSEMBLY			T1	75939	Transformer—Output transformer
C1		Capacitor—Fixed, paper, tubular, .0047 mfd., 400 v.		100221	Baffle—Speaker baffle and grille cloth
C2		Capacitor—Fixed, paper, tubular, .01 mfd., 200 v.		70392	Cord—Power cord & plug
C3		Capacitor—Fixed, paper, tubular, 0.1 mfd., 400 v.		74838	Grommet—Power cord strain relief (1 set)
C4		Capacitor—Fixed paper, .01mfd., 200 v		73117	Socket—Tube socket, 7 pin miniature for V1
C5A & B	75980	Capacitor—Electrolytic comprising:— 1 section of 50 mfd., 150 v., 1 section of 80 mfd., 150 v.		74822	Socket—Tube socket, 7 pin wafer for V2 & V3
C6		Capacitor—Fixed, paper, tubular, .033 mfd., 400 v.		76407	Speaker—4" x 6" PM speaker complete with cone & voice coil
C7		Capacitor—Fixed, mica, 82 mmf., 500 v.			SPEAKER ASSEMBLY
R1	76201	Control—Volume control			
R2		Resistor—Fixed, composition, 47,000 ohms, ±10%, ½ w.	*S-20713		Cabinet—Phenolic cabinet—black
R3		Resistor—Fixed, composition, 4.7 megohm, ±20%, ½ w.	76203		Cover—Bottom cover for cabinet—complete with feet
R4, R5		Resistor—Fixed, composition, 270,000 ohms, ±10%, ½ w.	*S-20712		Knob—Control knob—black
R6		Resistor—Fixed, composition, 33 ohms, ±20%, 1 w.			
R7		Resistor—Fixed, composition, 150 ohms, ±10%, ½ w.			
R8		Resistor—Fixed, composition, 1500 ohms, ±10%, ½ w.			
R9	72314	Resistor—Fixed, wire wound, 120 ohms, ±10%, 5 w.			

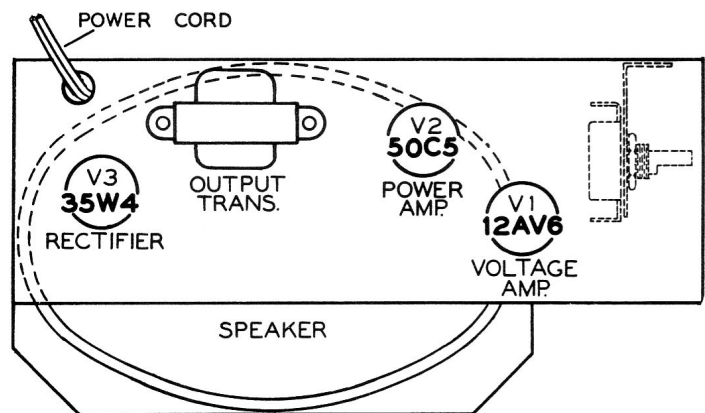
Only items listed under stock numbers are available as Replacement Parts.
All parts subject to change or withdrawal without notice.



Schematic Diagram

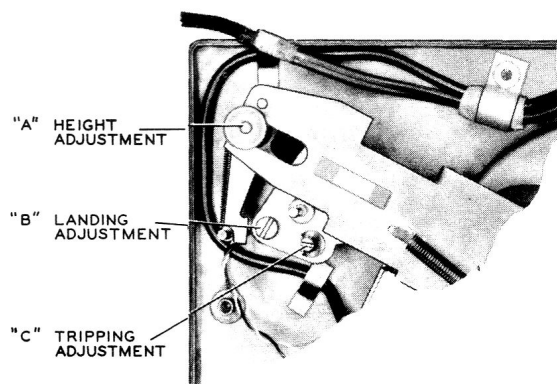
Critical Lead Dress

1. Dress all leads away from R6 and R9
2. Dress electrolytic capacitor away from R6 and R9
3. Dress filament leads down to chassis
4. Solder braid of W-1 such that it acts as a strain relief



Chassis Assembly (Top View)

VOL. CONT. & ON-OFF SW.

**Pickup Height Adjustment**

Adjust knurled nut (A) until the distance (during change cycle) between the top of the turntable and the stylus point is approximately $1\frac{1}{8}$ ".

Pickup Landing Adjustment

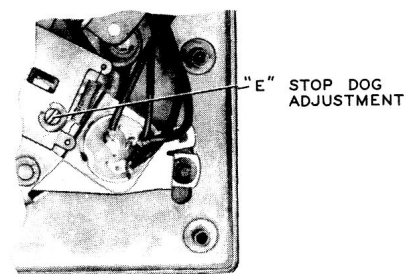
Adjust the screw driver landing adjustment stud "B" so the stylus lands $2\frac{5}{8}$ " $\pm 1/64$ " from the side of the center post.

Tripping Adjustment

Adjust the eccentric tripping stud (C) until the mechanism trips when the stylus is $1\frac{9}{32}$ " from the side of the center post.

Stop Dog Adjustment

Turn the eccentric screw (E) until the record drops to the turntable without striking the pickup arm.



Record Changer Adjustments