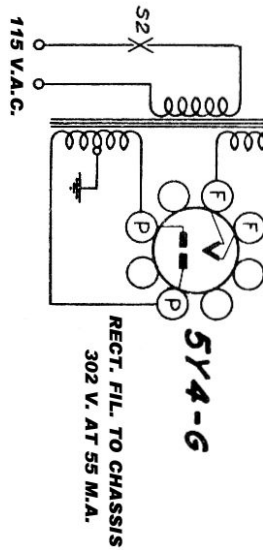


NOTE:
CONNECT TERMINAL NO. 2
TO ANTENNA SCREEN. IF
OUTSIDE ANTENNA BE USED
CONNECT LEAD ACROSS
TERMINALS 1 AND 2.

WINDING POLARITY
"S" DESIGNATES START OF WINDING
"F" DESIGNATES FINISH OF WINDING

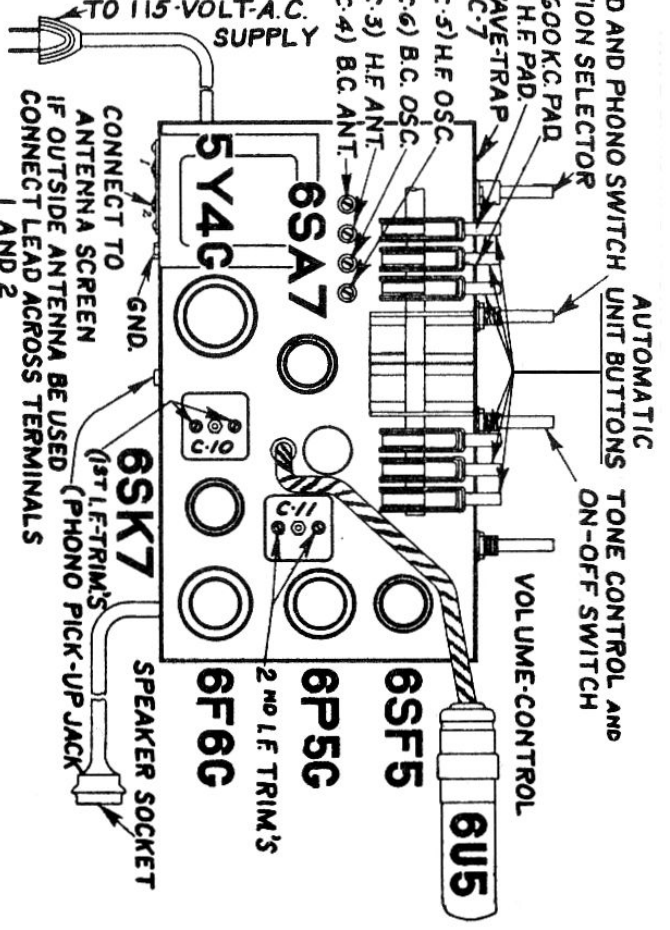
USED ON SOME
MODELS ONLY

**Phonola - Electrohome 9A62-P-1, 9A62-E4, 9A72-S,
9A62-E-3, Z9A62-E3 & Z9A62-E4**



RECT. FIL. TO CHASSIS
302 V. AT 55 M.A.

WAVE BAND AND PHONO SWITCH
 STATION SELECTOR
 (C-9) 600 K.C. PAD
 (C-8) H.F. PAD
 WAVE-TRAP
 C-7
 (C-5) H.F. OSC.
 (C-6) B.C. OSC.
 (C-3) H.F. ANT.
 (C-4) B.C. ANT.



ALIGNMENT — PROCEED IN SEQUENCE LISTED

ALIGNMENT AND CALIBRATION

These receivers are carefully aligned and calibrated at the factory with precision instruments. If realignment is necessary, the following equipment is required:

- (1) A Signal Generator to supply with accuracy the frequencies:
 - (a) 455 K.C., (b) 1460 K.C., (c) 600 K.C., (d) 15 M.C., (e) 6 M.C.
- (2) A dependable Output Meter.

Note 1—When aligning oscillator section at high frequencies, care should be taken that the receiver is not adjusted to an image frequency in place of the fundamental. At 15 M.C. the fundamental will be obtained at minimum trimmer capacity.

Note 2—When aligning antenna trimmer at high frequencies, rock gang condenser back and forth to obtain maximum peak.

Band	Band Switch Setting	Dummy Antenna	Connect Grid to	Radio Dial Setting	Generator Frequency	Trimmer Adjusted	Adjustment	Note
2nd I. F.	Centre	.1 Mfd.	Grid of 6SK7 I. F. Tube	1650 K. C.	455 K. C.	2nd I. F. C11	Maximum Output	
1st I. F.	Centre	.1 Mfd.	Grid of 6SA7 Converter	1650 K. C.	455 K. C.	1st I. F. C10	Maximum Output	
1460 K. C.	Centre	75 Mmfd.	Antenna	1460 K. C.	1460 K. C.	B.C. Osc. C6 B.C. Ant. C4	Maximum Output	
600 K. C.	Centre	75 Mmfd.	Antenna	600 K. C.	600 K. C.	B. C. Padder C9	Maximum Output	Rock Rotor Back & Forth
17 M. C.	Extreme Right	75 Mmfd. in Series with 350 Ohm	Antenna	17 M. C.	17 M. C.	S.W. Osc. C5 S.W. Ant. C3	Maximum Output	Check Image See Note 1
6 M. C.	Extreme Right	75 Mmfd. in Series with 350 Ohm	Antenna	6 M. C.	6 M. C.	S. W. Padder C8	Maximum Output	
Wave Trap	Centre	75 Mmfd.	Antenna	585 K. C.	455 K. C.	C7	Minimum Output	

Electrohome

- 9A62-P-1
- 9A62-E4
- 9A72-S
- 9A62-E-3
- 9A62-E3
- 9A62-E4