

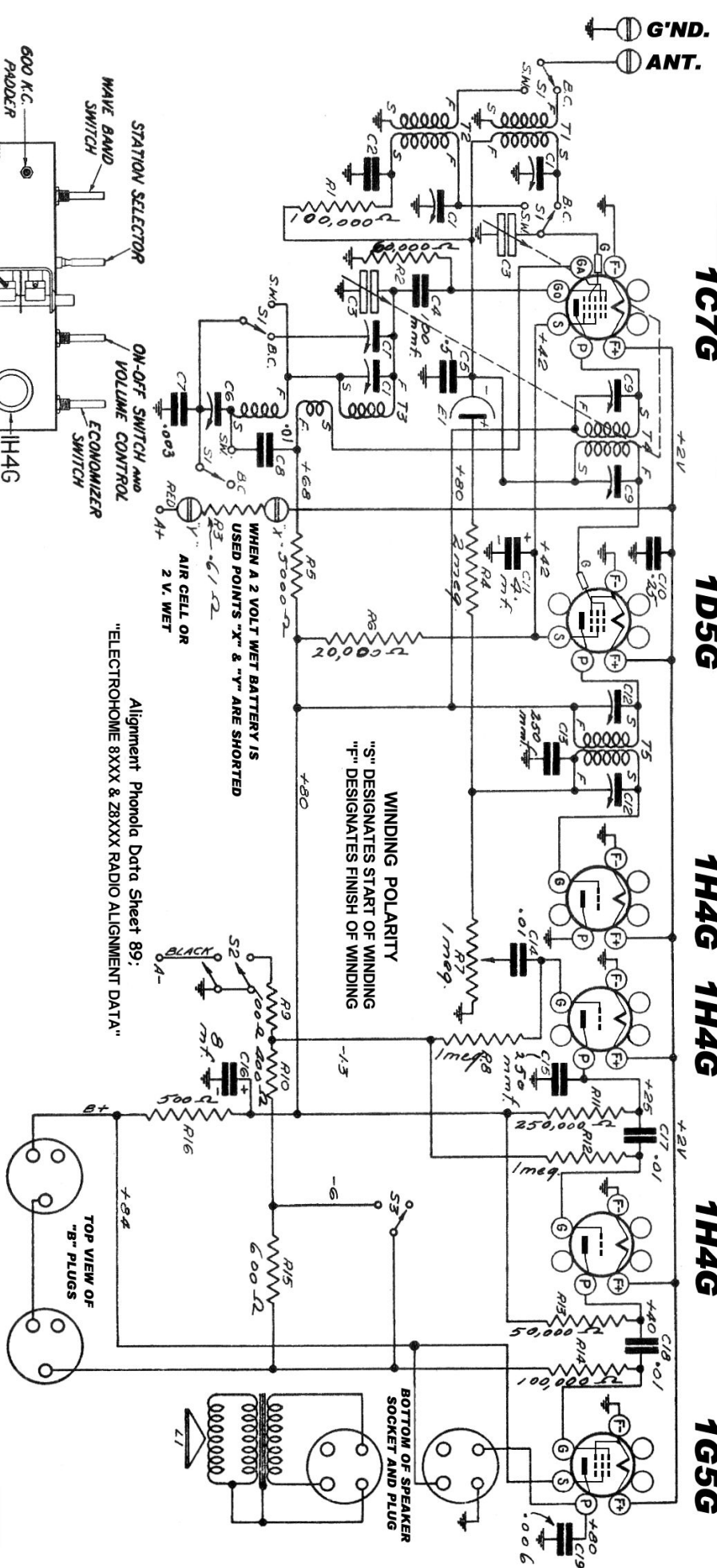
1C7G

1D5G

1H4G 1H4G

1H4G

1G5G



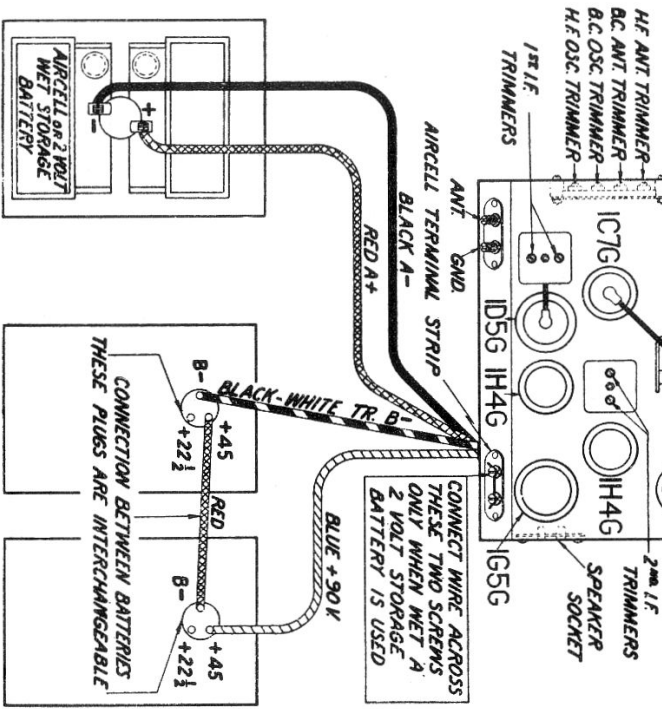
G'ND.
ANT.

WHEN A 2 VOLT WET BATTERY IS USED POINTS "X" & "Y" ARE SHORTED

AIR CELL OR 2 V. WET

WINDING POLARITY
"S" DESIGNATES START OF WINDING
"F" DESIGNATES FINISH OF WINDING

Alignment Phonola Data Sheet 89;
"ELECTROHOME 8XXX & Z8XXX RADIO ALIGNMENT DATA"



Phonola - Electrohome 8B62-E

Battery Operated Radio