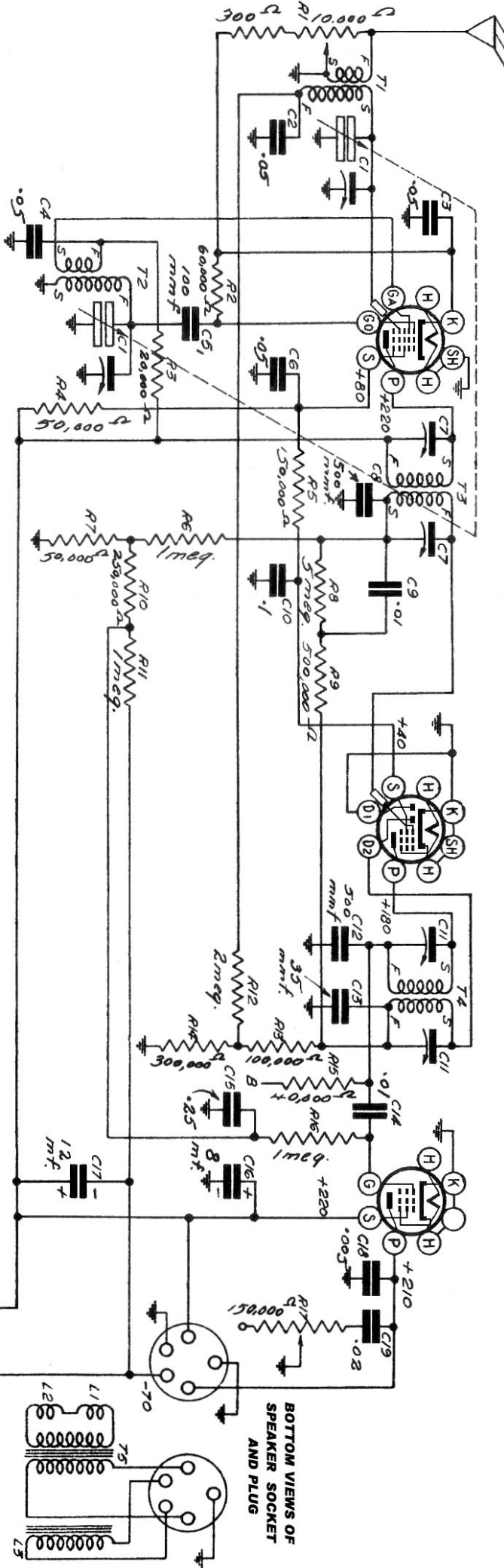


6A8

6B8

6K6G



WINDING POLARITY
 "S" DESIGNATES START OF WINDING
 "F" DESIGNATES FINISH OF WINDING

Alignment Phonola Data Sheet 89:
 "ELECTROHOME 8XXX & Z8XXX RADIO ALIGNMENT DATA"

ON-OFF SWITCH AND
 VOLUME CONTROL

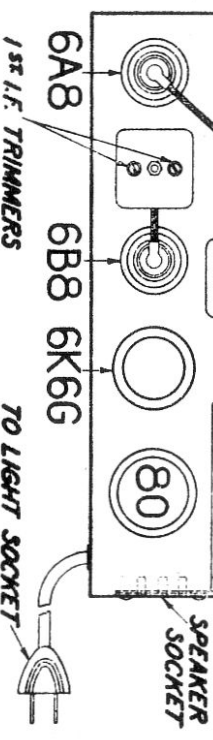
STATION
 SELECTOR

ANT.-WHITE
 GND.-BLACK

OSC.
 TRIMMER
 ANT.
 TRIMMER

2ND. I.F.
 TRIMMERS

Phonola -



Electrohome 841-P