



# PHILIPS

## SERVICE NOTES

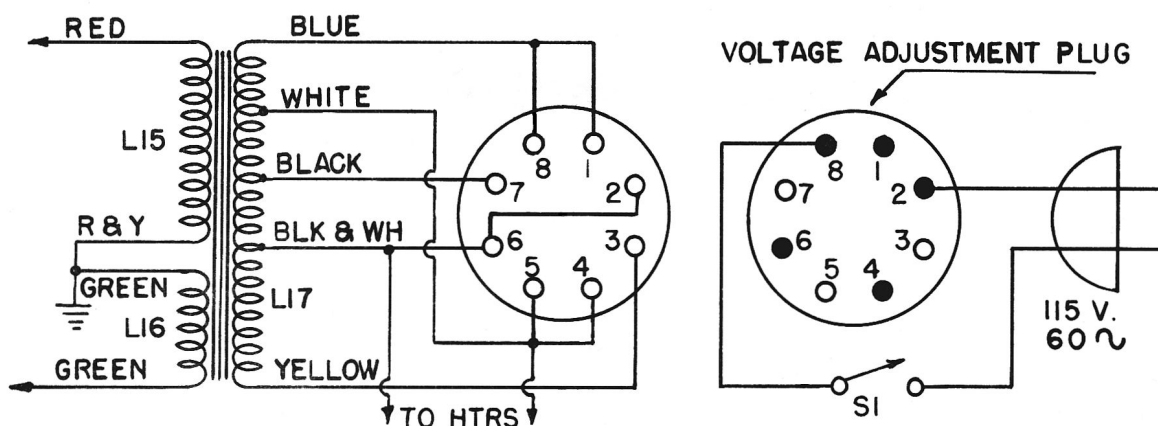
### RADIO RECEIVER CM50A6

The model CM50A6 is identical to the CM50A receiver, except that it is suitable for 60 cycle operation only. The CM50A6 power transformer incorporates a voltage adjustment plug and has a frequency rating of 60 cycles.

Refer to the CM50A Service Notes for specifications, alignment instructions, schematic diagram, replacement parts, etc.

Voltage Adjustment Plug - The voltage to which the receiver is set, is indicated by the voltage adjustment plug, which is located on the power transformer. The receiver is shipped with the plug set at 125 volts. The receiver should be operated at this setting when the line voltage is higher than average. The plug should be set at 110 volts when the receiver is to be operated on a line voltage that is normally average, or lower than average. Once the receiver has been adjusted to correspond with the average requirements of a local power line it should be left at that adjustment.

Details of the internal wiring of the primary of the power transformer, covering the voltage adjustment plug connections, are shown below.



Replacement Parts - All standard CM50A replacement parts may be ordered for the CM50A6 receiver. All new parts should be wired according to the CM50A circuit diagram.

The replacement power transformer for this receiver has a 115 volts, 25 to 60 cycle rating (and no voltage adjustment plug). The use of this 25 to 60 cycle transformer will make the CM50A6 identical to the CM50A receiver.