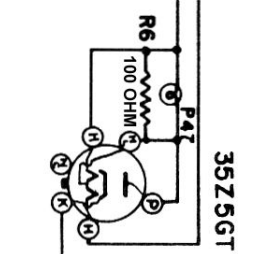
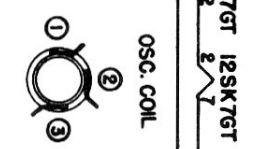
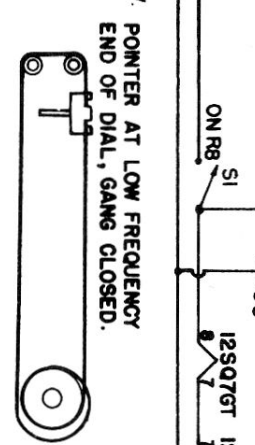
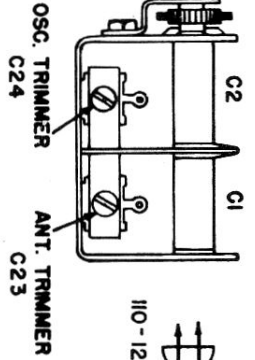
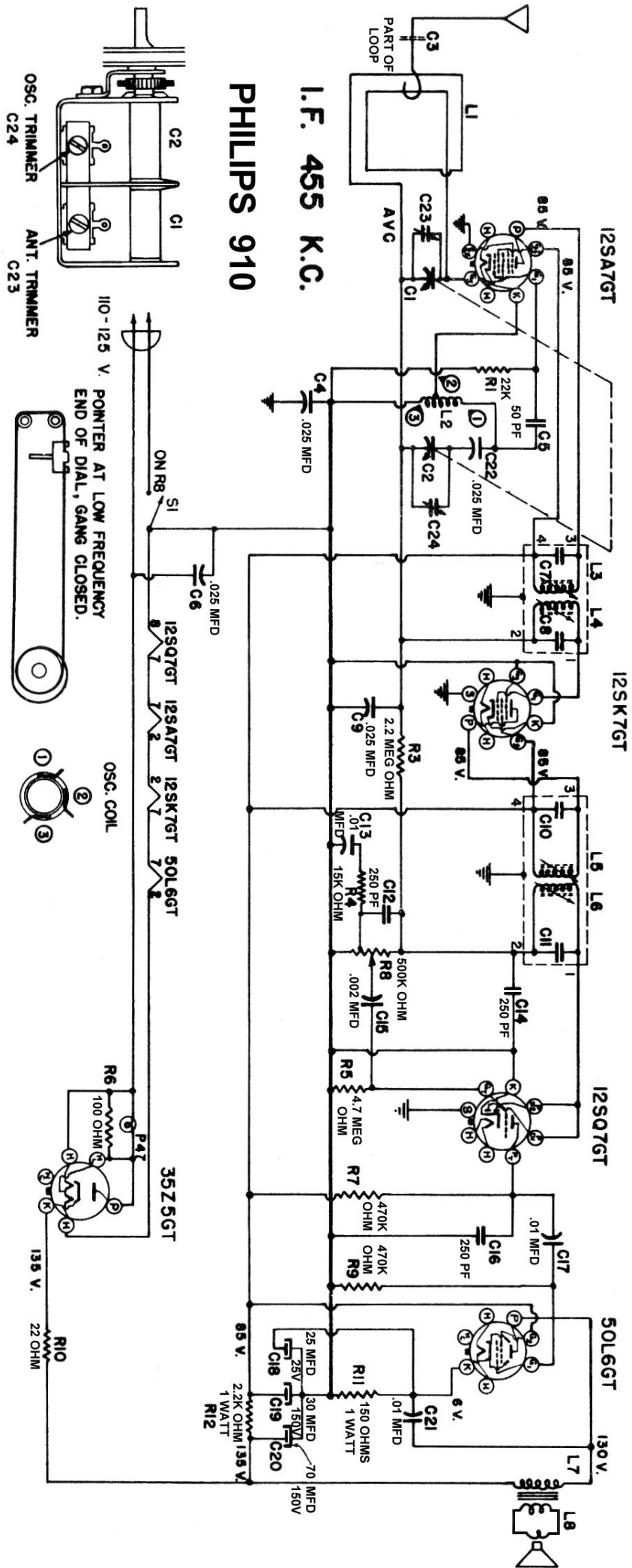
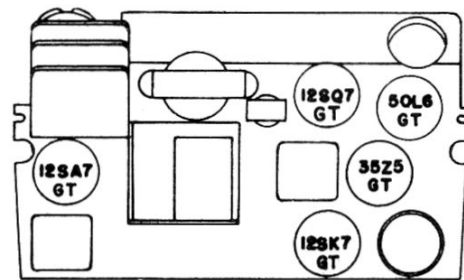
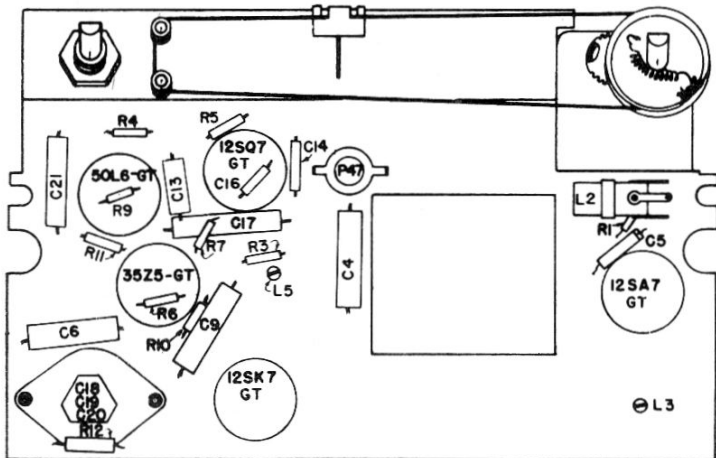
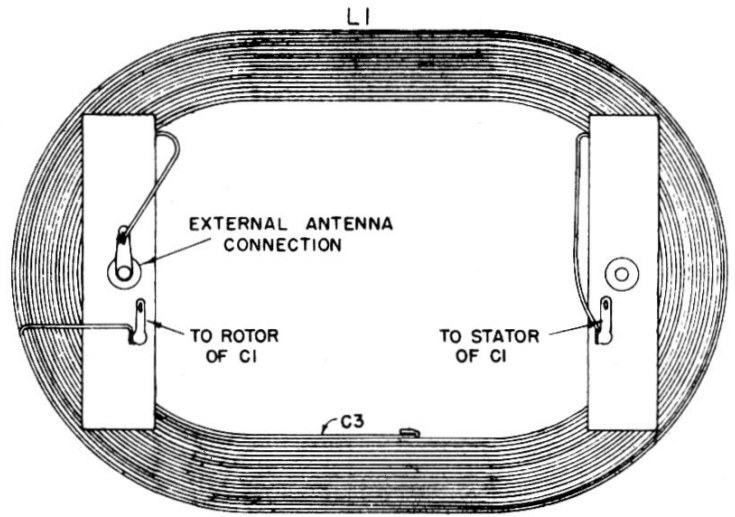
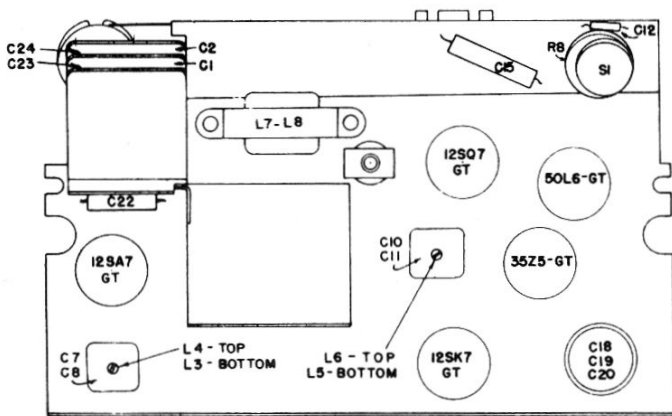


# I.F. 455 K.C. PHILIPS 910





## PHILIPS 910

For the purpose of alignment the dial background, (painted white) is provided with three Calibration points:

just the pointer to the extreme left hand marker on the dial background.

(1) With the tuning condenser closed (maximum capacity) ad-

(2) Turn the tuning condenser until the pointer is at the extreme right hand marker: \*proceed as follows:

STEPS	SIGNAL GENERATOR		RECEIVER	
	Output connection to receiver	Frequency	Pointer setting	Adjust in stated order for maximum output
1	To Pin 8 of 12SA7GT through .1 mfd. capacitor	455 kc.	Extreme Right Hand Marker	I.F. Transformers: L6-L5, L4-L3
2	To antenna lead through 200 mmf condenser	1400 kc.	Extreme Right Hand Marker	OSC Trimmer C24 ANT Trimmer C23

NOTE: Second Marker from left hand end is used to check calibration at 600 kc.