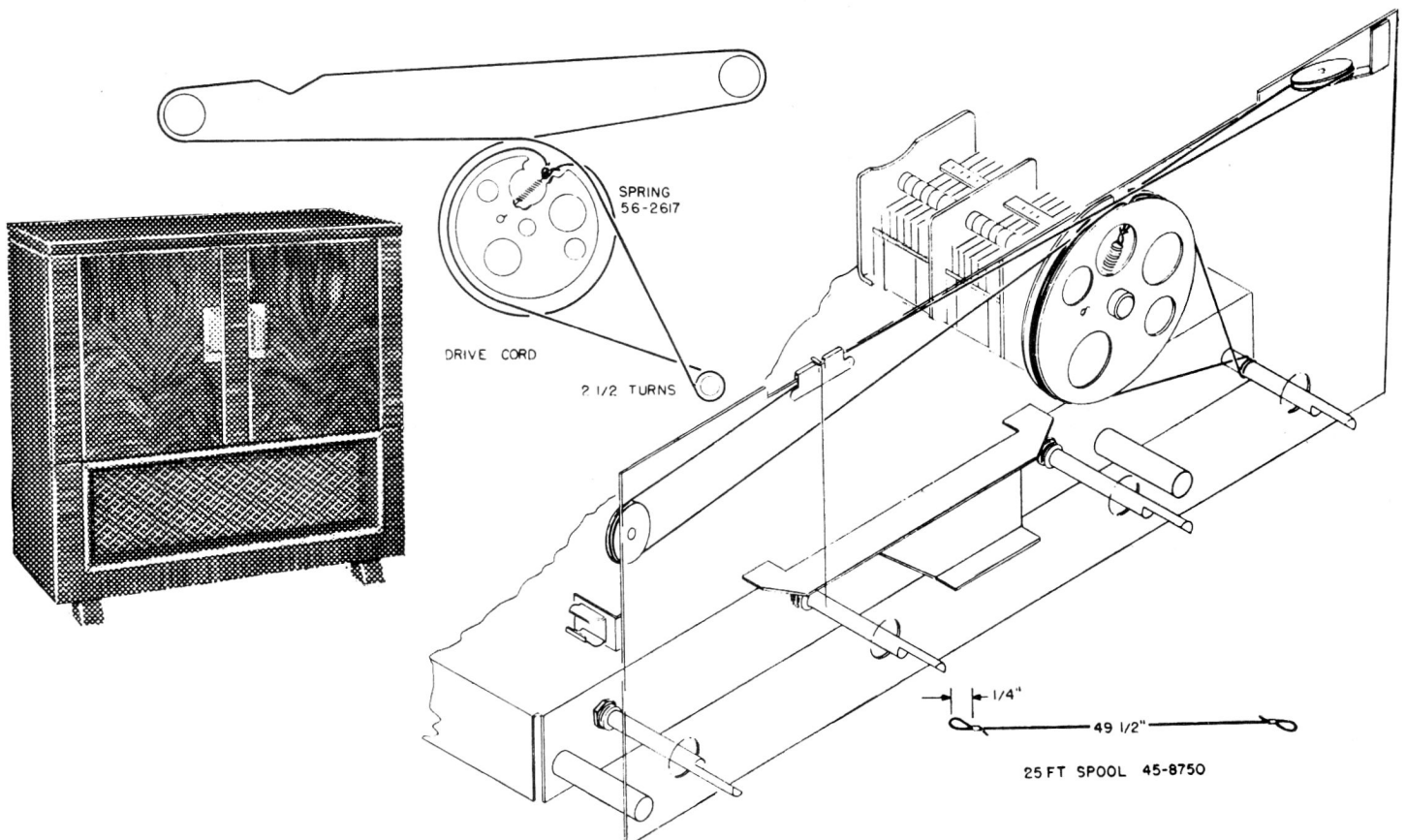
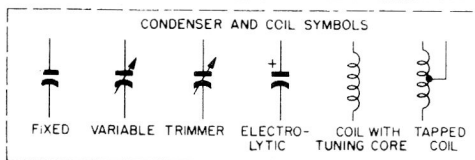
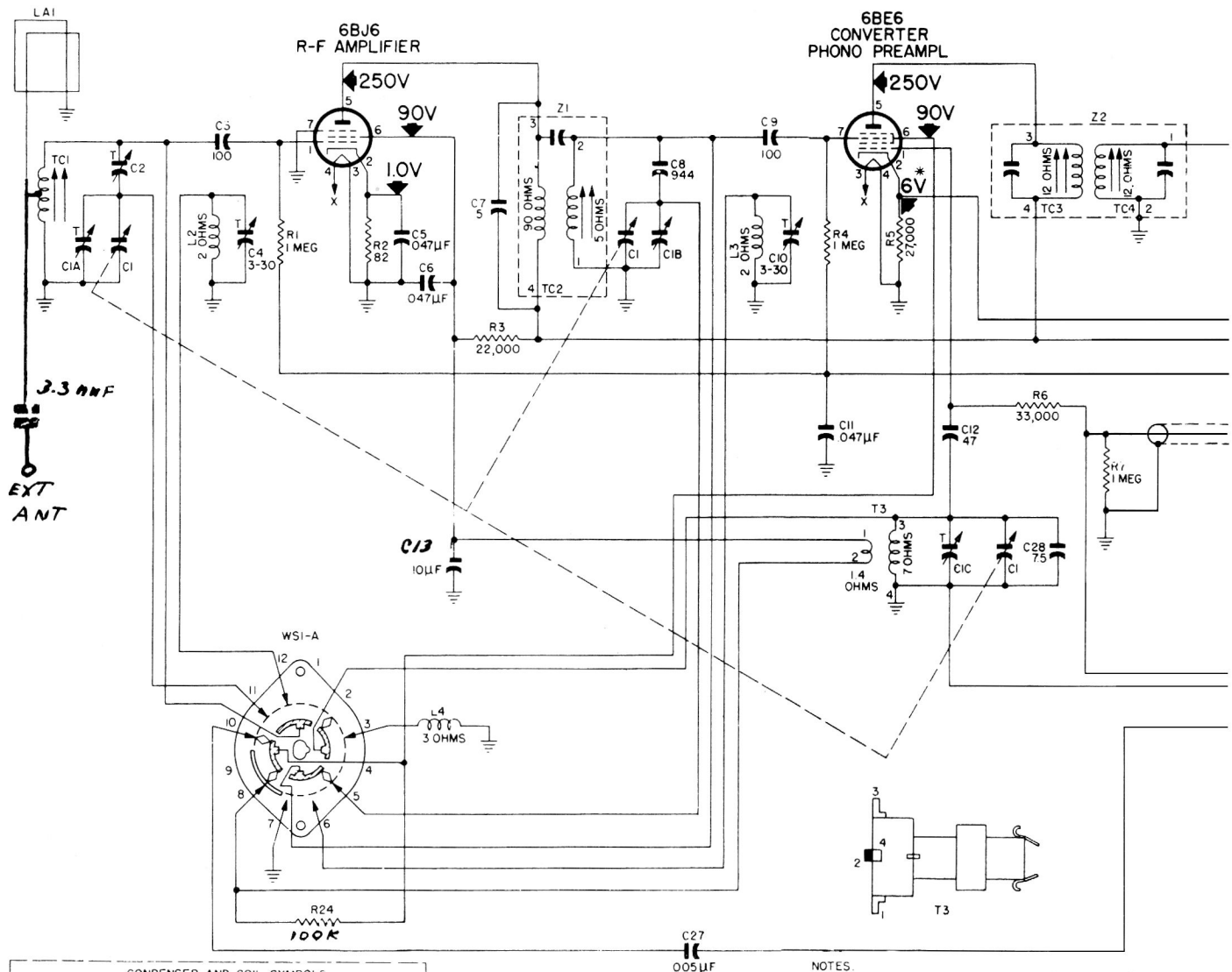


Top View, Showing Tuning Adjustments





FREQUENCY RANGE

Broadcast	540 k.c. to 1620 k.c.
Special Services	1700 kc. to 3400 kc.
Audio Output	4.5 watts

ALIGNMENT PROCEDURE

GENERAL

RADIO CONTROLS—Set volume control for maximum output, and set tuning control as indicated in the alignment chart. Set band switch to broadcast position for first 5 steps, then to special services position for steps 6 and 7.

OUTPUT INDICATOR—Connect output indicator (either an oscilloscope or a 1000-ohms-per-volt, a-c voltmeter across voice-coil terminals

NOTE 1: Make up a 6—8 turn, 6-inch-diameter loop from insulated wire; connect to signal-generator leads and place about 1 foot from radio loop antenna. The position of the radio loop with respect to the chassis should be approximately the same as when both are mounted in the cabinet.

NOTE 2: To set the tuning gang to 1620 kc., place a piece of 6-mil flat shim stock beneath the heel of the rotor, and turn the rotor until it holds the shim firmly in place. Then remove the shim.

SIGNAL GENERATOR—Use an AM r-f generator, connected as indicated in the alignment chart.

OUTPUT LEVEL—During alignment, attenuate signal-generator output to maintain output indication.

DIAL POINTER—Before the alignment is started, the dial pointer should be set to coincide with the dial scale mark to the left of “55” when the tuning gang is fully meshed.

NOTES:
ALL RESISTOR VALUES IN OHMS AND ALL CONDENSER VALUES
IN μF UNLESS OTHERWISE MARKED.

ALL VOLTAGES MEASURED WITH A 20,000-OHMS-PER-VOLT
VOLTMETER BETWEEN POINTS INDICATED AND CHASSIS
GROUND, AT A LINE VOLTAGE OF 117V AC.

* VOLTAGE MEASURED WITH WSI IN PHONO POSITION.

WSI SHOWN IN THE BROADCAST POSITION,
⊙ LESS THAN ONE OHM.

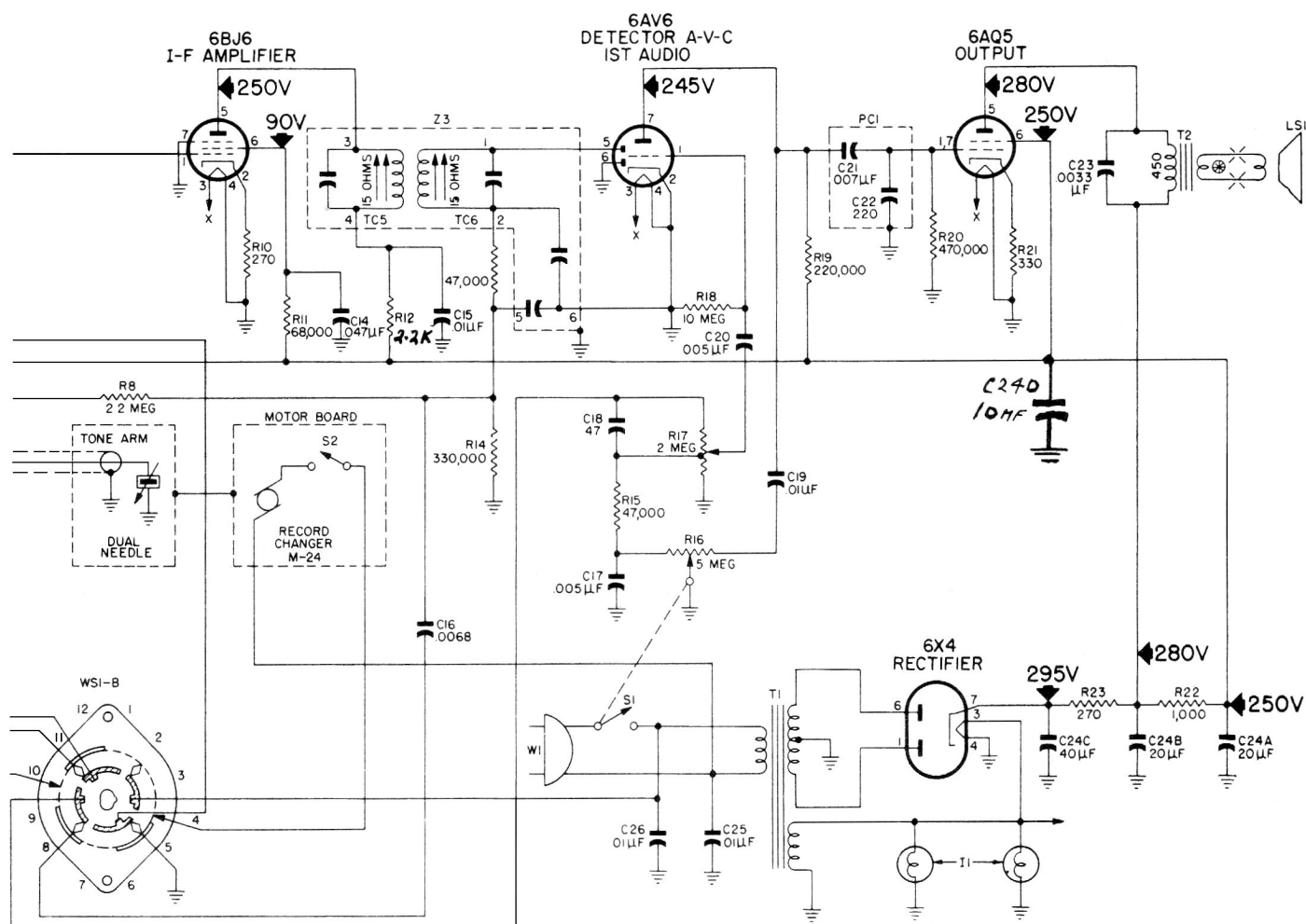
⑤ LESS THAN ONE UNIT.

OPERATING VOLTAGE 60 cycles — 105—120 volts, a-c.

POWER CONSUMPTION..... 80 watts

ANTENNA Built-in, low-impedance loop

INTERMEDIATE FREQUENCY 460 kc.



ALIGNMENT CHART

STEP	SIGNAL GENERATOR		RADIO		
	CONNECTION TO RADIO	DIAL SETTING	DIAL SETTING	SPECIAL INSTRUCTIONS	ADJUST
1	Ground lead to chassis. Output lead through a .01-μf. condenser to pin 7 (mixer grid) of 6BE6, converter.	460 kc.	Tuning gang fully open.	Adjust, in order given in next column, for maximum output.	TC6—2nd i-f sec. TC3—1st i-f pri. TC5—2nd i-f pri. TC4—1st i-f sec.
2	Radiating loop. See Note 1 below.	1620 kc.	1620 kc. See Note 2 below.	Adjust for maximum output.	C1C—osc. trimmer
3	Same as step 2.	1520 kc	Tune radio to generator signal.	Adjust for maximum output. (High-frequency adjustment)	C1B—mixer grid trimmer C1A—r-f trimmer
4	Same as step 2.	580 kc.	Same as step 3.	Adjust for maximum output. (Low-frequency adjustment)	TC2—r-f transformer
5	Repeat steps 3 and 4 until no further improvement is obtained.				
6	Same as step 2.	3200 kc	Same as step 3.	Adjust for maximum output.	C10—special services mixer-grid trimmer C4—special services r-f trimmer
7	Same as step 2.	1800 kc.	Same as step 3.	Adjust for maximum output.	C2—special services r-f padder