

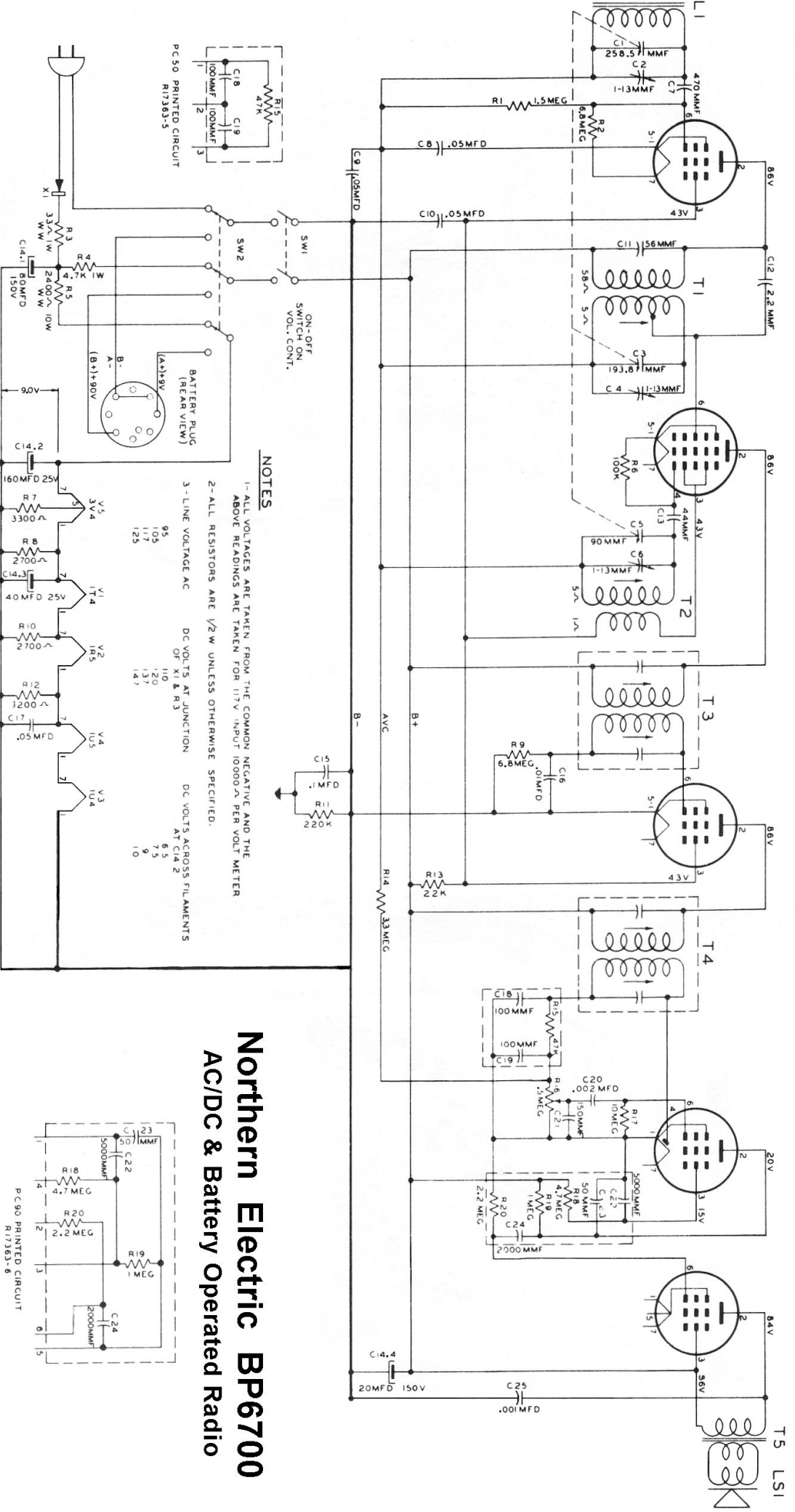
V1
1T4
R-F

V2
1R5
OSC-CONV

V3
1U4
I-F

V4
1U5
DET-AVC-AUDIO

V5
3V4
OUTPUT

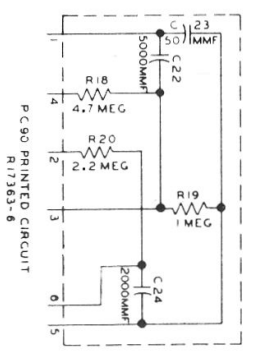
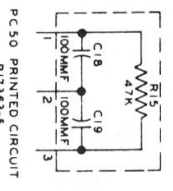


NOTES

1- ALL VOLTAGES ARE TAKEN FROM THE COMMON NEGATIVE AND THE ABOVE READINGS ARE TAKEN FOR 117V INPUT 10000- μ PER VOLT METER

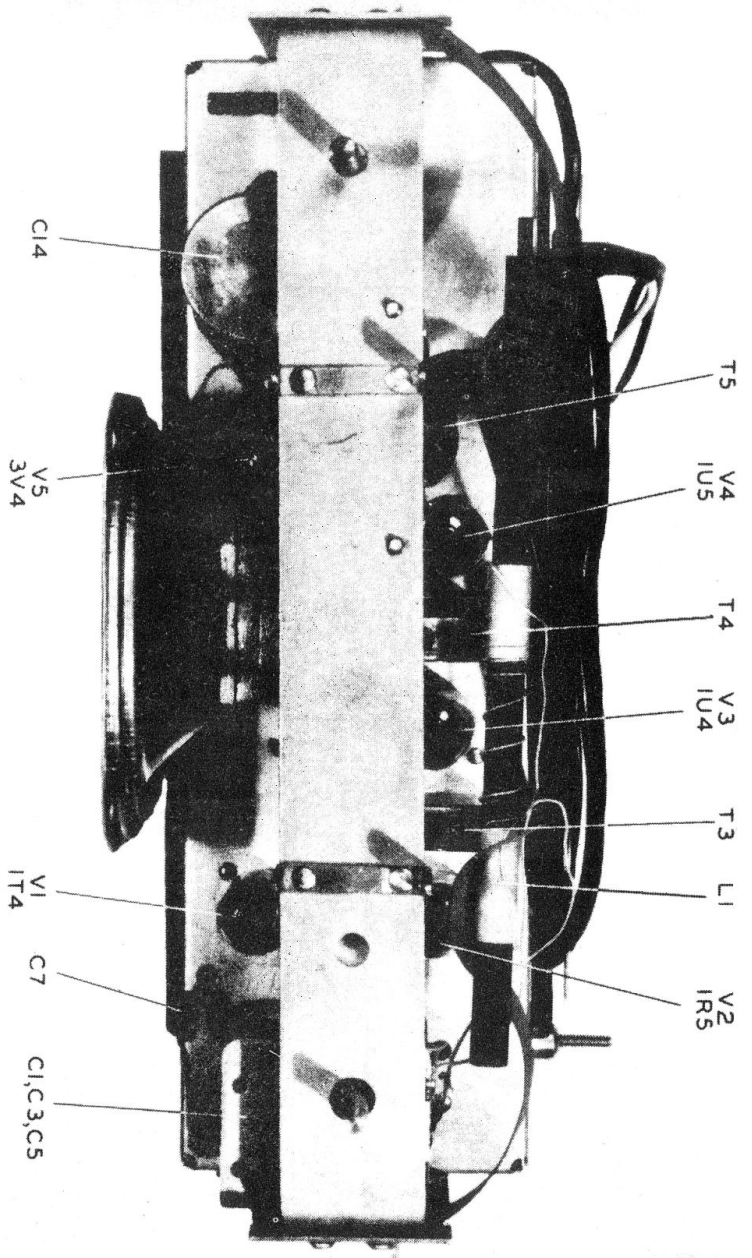
2- ALL RESISTORS ARE 1/2 W UNLESS OTHERWISE SPECIFIED.

| 3- LINE VOLTAGE AC | | DC VOLTS AT JUNCTION OF X1 & R3 | | DC VOLTS ACROSS FILAMENTS AT C14.2 | |
|--------------------|-----|---------------------------------|------|------------------------------------|-----|
| 95 | 105 | 9.5 | 9.5 | 9.5 | 9.5 |
| 105 | 117 | 1.20 | 1.37 | 9 | 9 |
| 125 | 125 | 1.47 | 1.47 | 10 | 10 |



**Northern Electric BP6700
AC/DC & Battery Operated Radio**

Northern Electric BP6700 AC/DC & Battery Operated Radio



ALIGNMENT

The alignment procedure is to be carried out according to the following table and in the order shown:

| Align. Freq. | Dummy Antenna | Receiver Connection |
|--------------|---------------------------------------|---------------------|
| 455 KC | .1 uf | Pin 6 V2 |
| 530 KC | .1 uf | Pin 6 V2 |
| 1620 KC | .1 uf | Pin 6 V2 |
| 1400 KC | .1 uf | Pin 6 V1 |
| 600 KC | .1 uf | Pin 6 V1 |
| 1400 KC) | Loosely couple gen. lead | |
| 600 KC) | to antenna core or used standard loop | |

Items to be adjusted for Maximum Output, and their Location

- Gang open, adjust IF slugs on T4 and T3 with very small screw driver
- Gang closed, adjust T2 osc. coil slug
- Gang open, adjust C6 osc. trimmer
- Rock Gang, adjust C4 mixer trimmer
- Rock Gang, adjust T1 mixer slug
- Adjust C2 Antenna trimmer
- Adjust loose turns on loop core by sliding to right or left. Cement in position. This need not be touched again unless gang or core is replaced.

