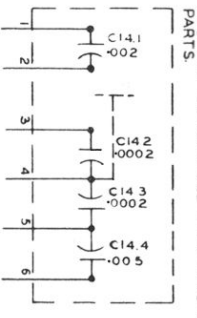
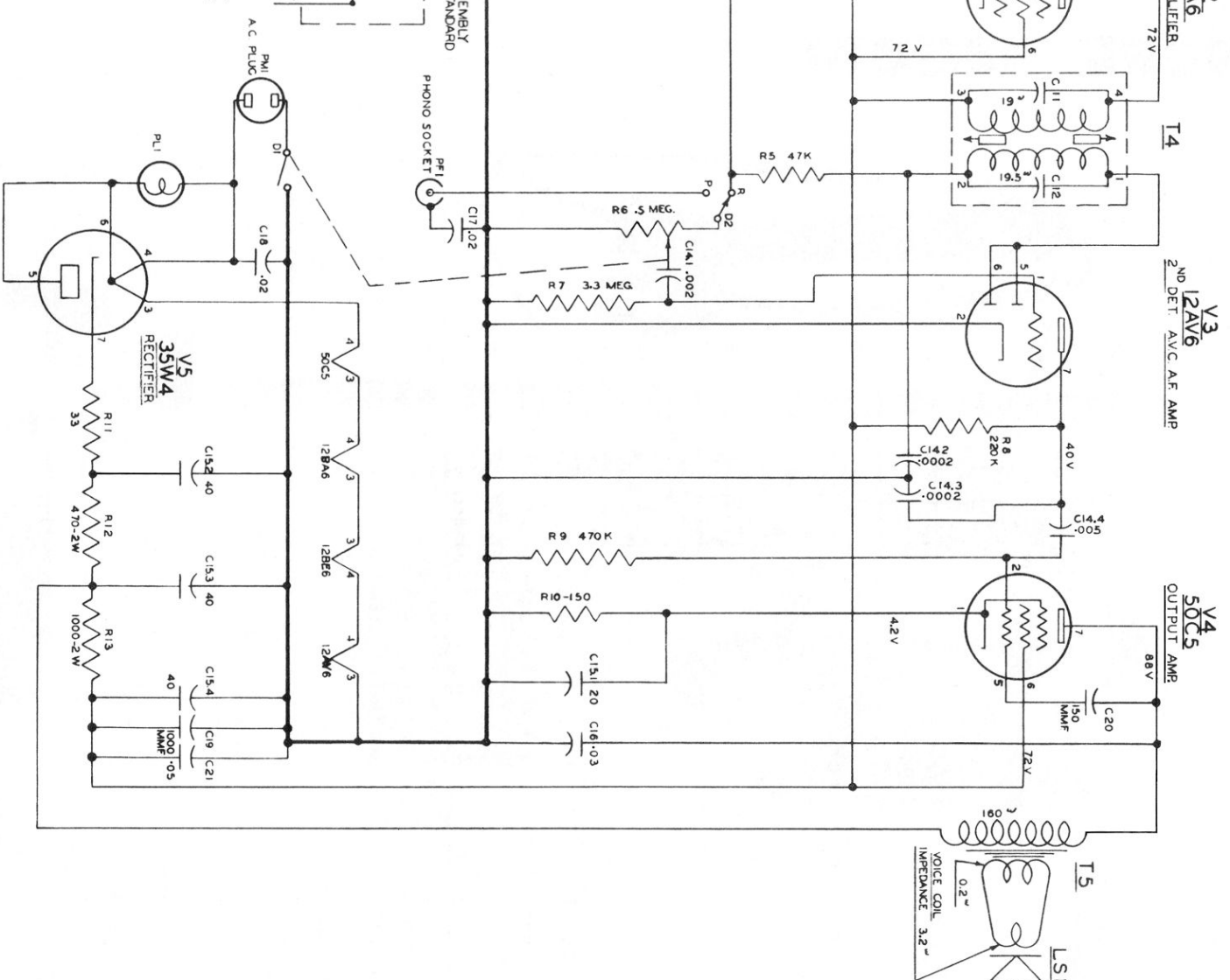
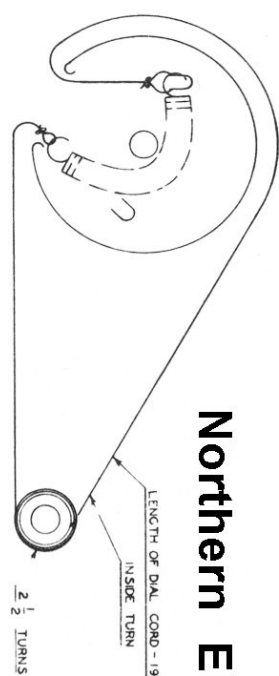
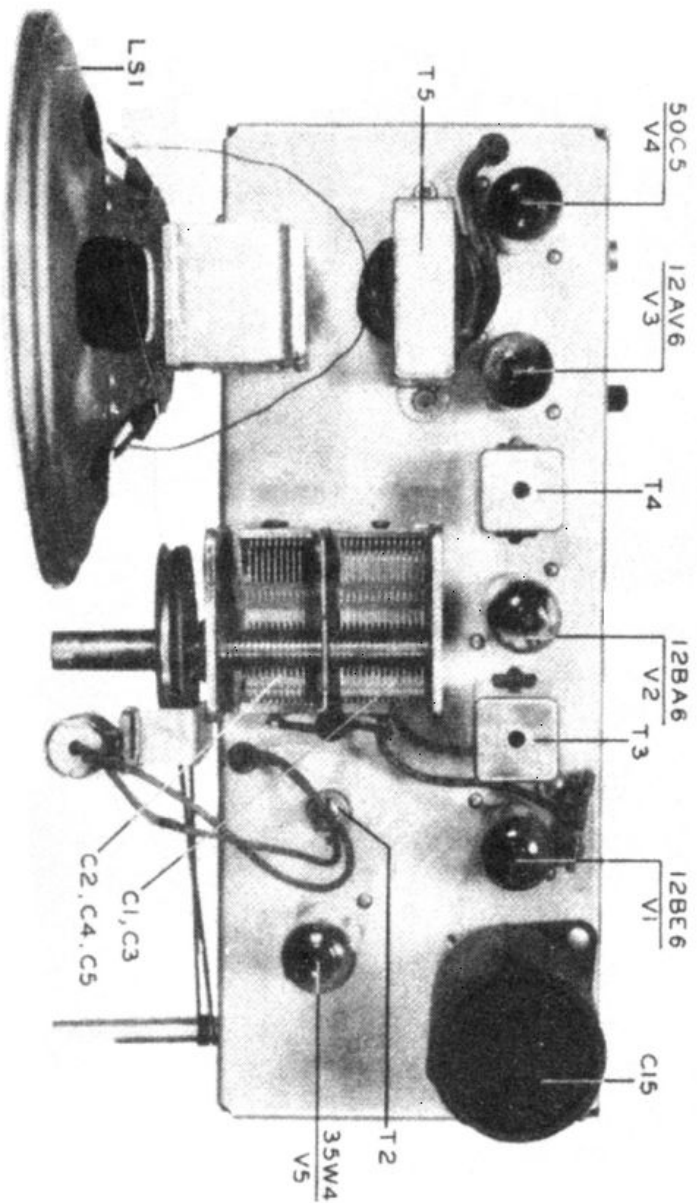


- NOTES -
1. ALL VOLTAGES ARE TAKEN FROM THE COMMON NEGATIVE AND THE ABOVE READINGS ARE TAKEN FOR 117 V INPUT 20,000 PER VOLT METER.
  2. ALL RESISTORS - 5 WATT UNLESS OTHERWISE SPECIFIED
  3. ALL CAPACITOR VALUES ARE SHOWN IN MFD UNLESS OTHERWISE SPECIFIED



# Northern Electric 5500





## Northern Electric 5500

### ALIGNMENT

Alignment procedure should be carried out according to the following table and in the order shown.

Alignment Frequency	Dummy Antenna	Receiver Connection	Items to be adjusted for max. output and their location
I.F. 455 kc	.1 uf	Rear Section of Gang	Tuning slugs in I.F. Transformers T3 and T4 with gang open using a non-metallic alignment tool.
R.F. 535 kc	1000 ohm	Antenna Lead	Adjust tuning slug in oscillator coil T2.
R.F. 1620 kc	1000 ohm	Antenna Lead	Adjust trimmer C5 on front section of gang.
R.F. 535 kc	1000 ohm	Antenna Lead	Readjust tuning slug in oscillator coil T2.
R.F. 1620 kc	1000 ohm	Antenna Lead	Readjust trimmer C5 on front section of gang. Adjust trimmer C2 on rear section of gang.
R.F. 1400 kc	1000 ohm	Antenna Lead	Adjust rear gang trimmer C3.