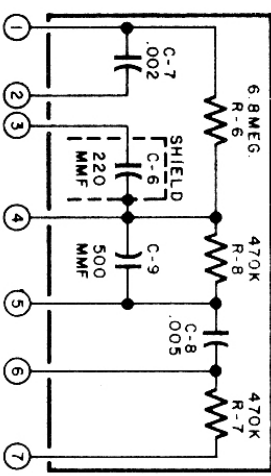


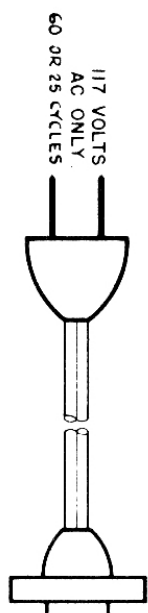
V-1 1st I.F. (513-342) PEAKED AT 455 KC
 V-2 2nd I.F. (513-342) PEAKED AT 455 KC
 V-3 12AV6
 V-4 50C5
 T-3 OUTPUT TRANSFORMER 513-317

COUPLATE PT. NO. 511-977



* INDICATES COMPONENTS ARE PART OF COUPLATE (PART NO. 511-977)
 ① REFERS TO TERMINAL NUMBER ON COUPLATE.

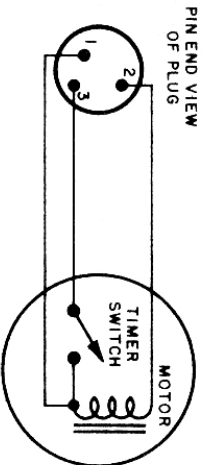
SAFETY INTERLOCK SWITCH



HEATERS



CLOCK TIMER (513-3652)



Marconi Model 442 Emerson Model 826

Marconi Model 442 Alignment Procedure

1. Use isolation transformer if available. If not, connect a .25 Mfd. capacitor in series with low side of signal generator and B neutral. (Low side of volume control.)
2. Volume control should be at maximum position. Output of signal generator should be no higher than necessary to obtain an output reading. Use an insulated screw driver for adjusting.

STEP	DUMMY ANTENNA	SIGNAL GENERATOR COUPLING	SIGNAL GENERATOR FREQUENCY	RADIO DIAL SETTING	OUTPUT METER	ADJUST	REMARKS
1	.005 Mfd.	High side to grid (pin 7) of V1 (12BE6) Low side to B-Neutral	455 Kc.	Variable Condenser fully open	Across Voice Coil Terminals	Top & Bottom Aligners of T2 & T1 in that order	Adjust for Maximum Output
2		Form loop of several turns and radiate signal into receiver	1620 K c.	"		Trimmer C3 (Osc.)	Maximum Output
3			1400 K c.	Tune for maximum output		Trimmer C2	Output

