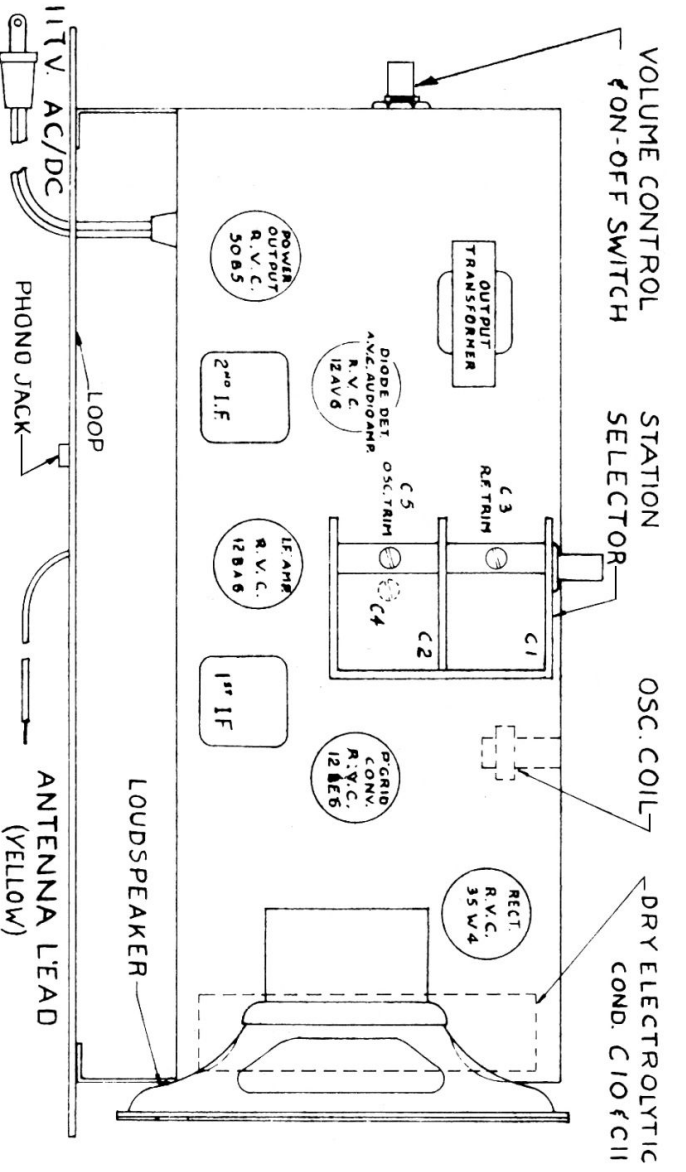
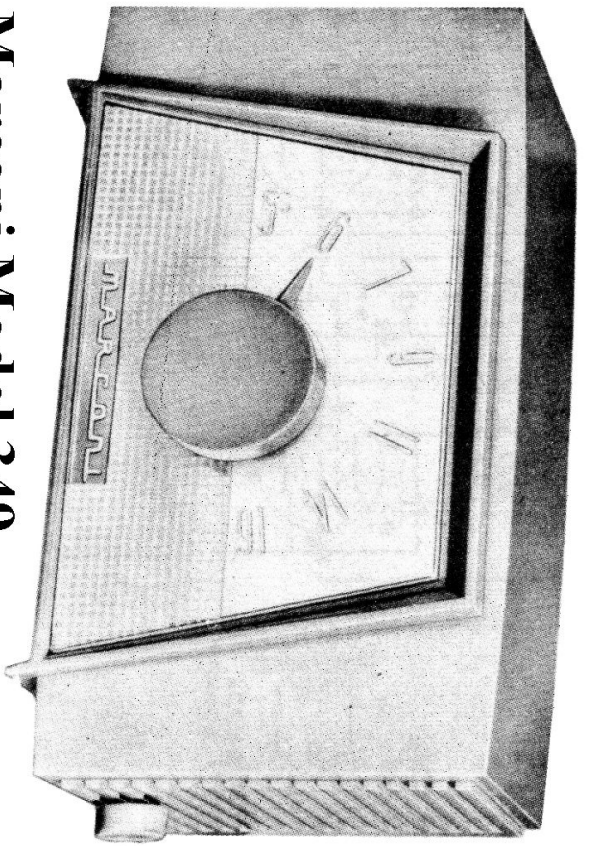


Marconi Model 349

"ON-OFF" SW. ON VOL. CONTROL #509-954



Marconi Model 349

Marconi Model 349 Alignment Procedure

STEP	CONNECT S. G. OUTPUT TO	FREQUENCY	DIAL SETTING	ADJUST	CIRCUITS RESONATED	REMARKS
1	*C. G. 12BE6	455 K. C.	Gang at Maximum	Top & Bottom Aligners	No. 2 I. F.	Adjust
2	*C. G. 12BE6	455 K. C.	Gang at Maximum	Top & Bottom Aligners	No. 1 I. F.	for
3	Antenna Lead And Chassis	1620 K. C.	1620 K. C.	C4 C3	Oscillator R. F. Loop	Maximum Output
4		580 K. C.	580 K. C.	Check tracking and sensitivity Adjust gang plates if necessary		

* Lug on detector section (Centre) of gang forms suitable point of connection. Apply signal through a 400 ohms resistor.