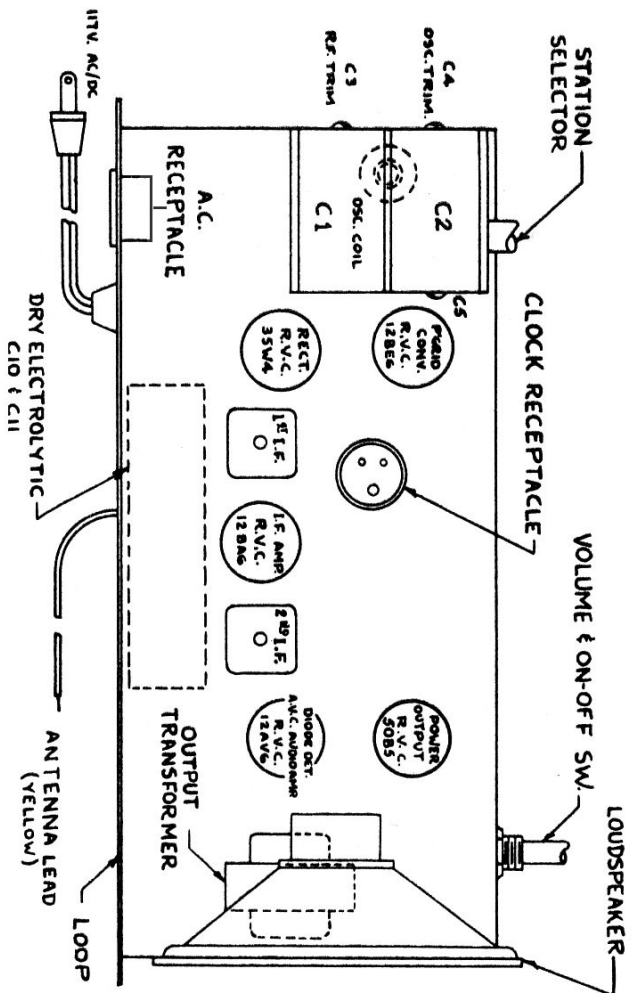
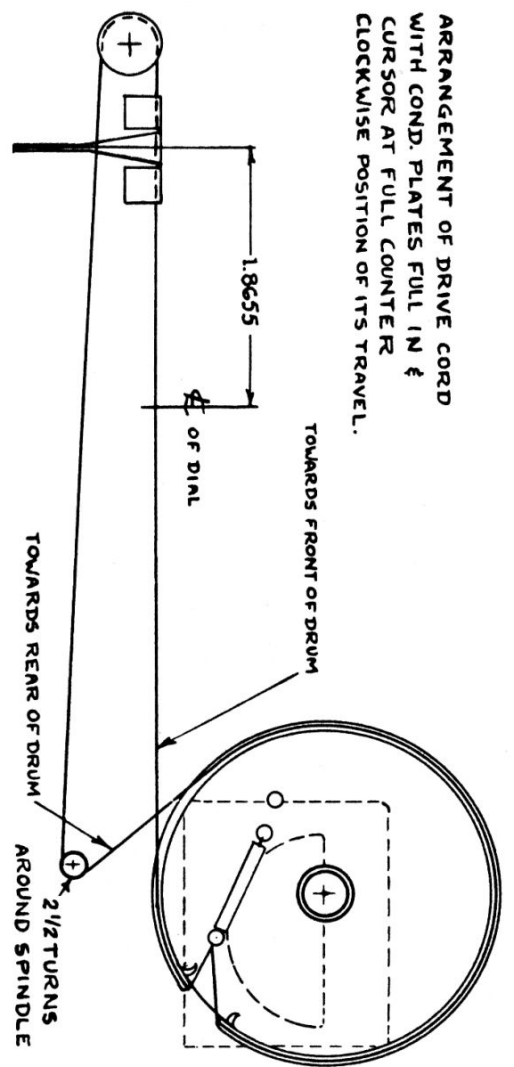


**Marconi Model 342**

"ON-OFF" 3W. ON VOL. CONTROL #509-955



ARRANGEMENT OF DRIVE CORD WITH COND. PLATES FULL IN & CURSOR AT FULL COUNTER CLOCKWISE POSITION OF ITS TRAVEL.



### Marconi Model 342 Alignment Procedure

CONNECT S.G. OUTPUT TO	INPUT FREQUENCY	DIAL SETTING	ADJUST	CIRCUIT RESONATED	REMARKS
# Control Grid 12BE6	455 K. C.	Gang at Minimum	Top & Bottom Aligner	2nd I. F.	Maximum Output
# Control Grid 12BE6	455 K. C.	Gang at Minimum	Top & Bottom Aligner	1st I. F.	Maximum Output
# Radiation Loop	1620 K. C.	Gang at Minimum	C4	Oscillator	Maximum Output
# Radiation Loop	1400 K. C.	1400 K. C.	C3	R. F.	Maximum Output

# Lug on Detector section of gang forms a convenient point of Connection.

## Radiation Loop may consist of 4 turns of #18 wire approximately 6 inches in diameter and spaced 2 to 4 feet from receiver loop.

Note: To prevent possible damage to test instrument when aligning this receiver, an isolating transformer should be used between the line and the receiver.

# Marconi Model

# 342