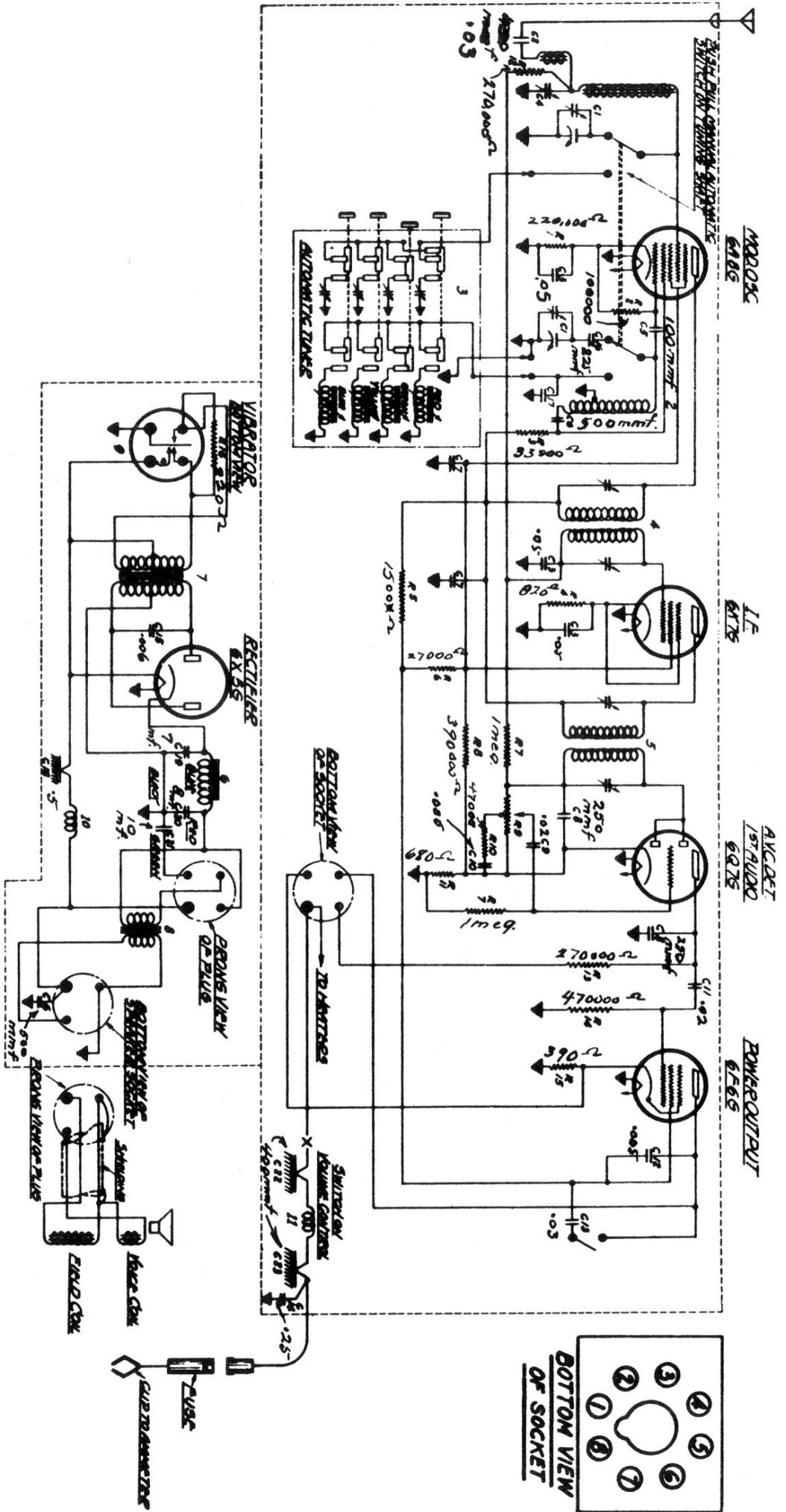
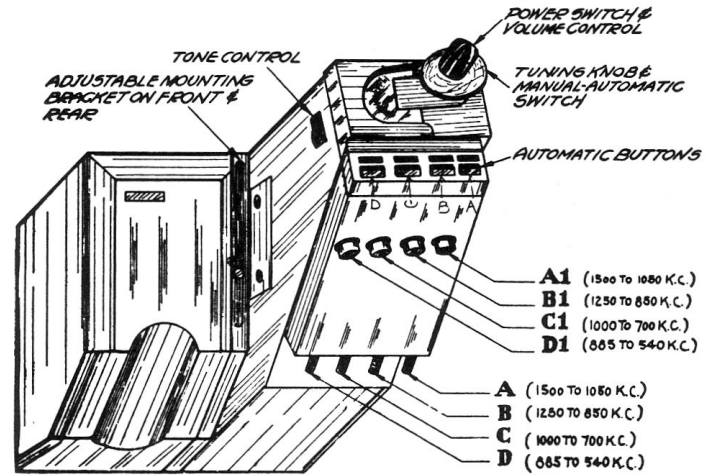
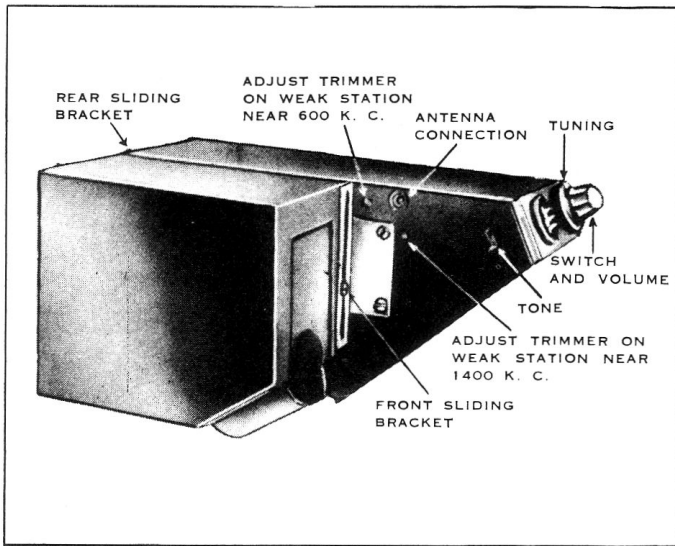


Marconi Model 294 Automobile Radio



Marconi Models 291, 294 Alignment Procedure

CONNECT SIG.GEN.TO	SET SIG. GEN. TO	SET GANG COND. TO	ADJUST TRIMMER	TRIMMER FUNCTION	ADJUSTMENT REMARKS
CG 6A8G	456 K.C.	MAX.CAP.	A B C D IN ORDER	#2 & #1 I.F.s.	MAX. OUTPUT
ANT.LEAD	1530 K.C.	MIN.CAP.	E	OSCILLATOR	TUNE SIGNAL
ANT.LEAD	1400 K.C.	1400 K.C.	F	ANT.STAGE	MAX. OUTPUT
ANT.LEAD	600 K.C.	600 K.C.	G	ANT.PADDER	MAX. OUTPUT



VOLTAGE READINGS

SOCKET PINS TO CHASSIS MODEL 291 & 294

TUBE	FUNCTION	CAP	PIN 1	PIN 2	PIN 3	PIN 4	PIN 5	PIN 6	PIN 7	PIN 8
RVC 6A8G	Mixer Osc.	0	0	0	240	93	*	147	6	**
RVC 6K7G	I.F.Amp.	0	0	0	240	93	***	-	6	***
RVC 6Q7G	DET.AVC & AUDIO	0	0	0	112	0	0	-	6	1.8
RVC 6F6G	Output	-	0	0	235	250	0	-	6	16
RVC 6X5G	Rectifier	-	0	0	-	0	-	-	6	250

* -5.8 V. (Manual) +4.2 V. (Automatic)
 ** +4.4 V. (Manual) +5.0 V. (Automatic)
 *** +5.2 V. (Manual) +4.9 V. (Automatic)

