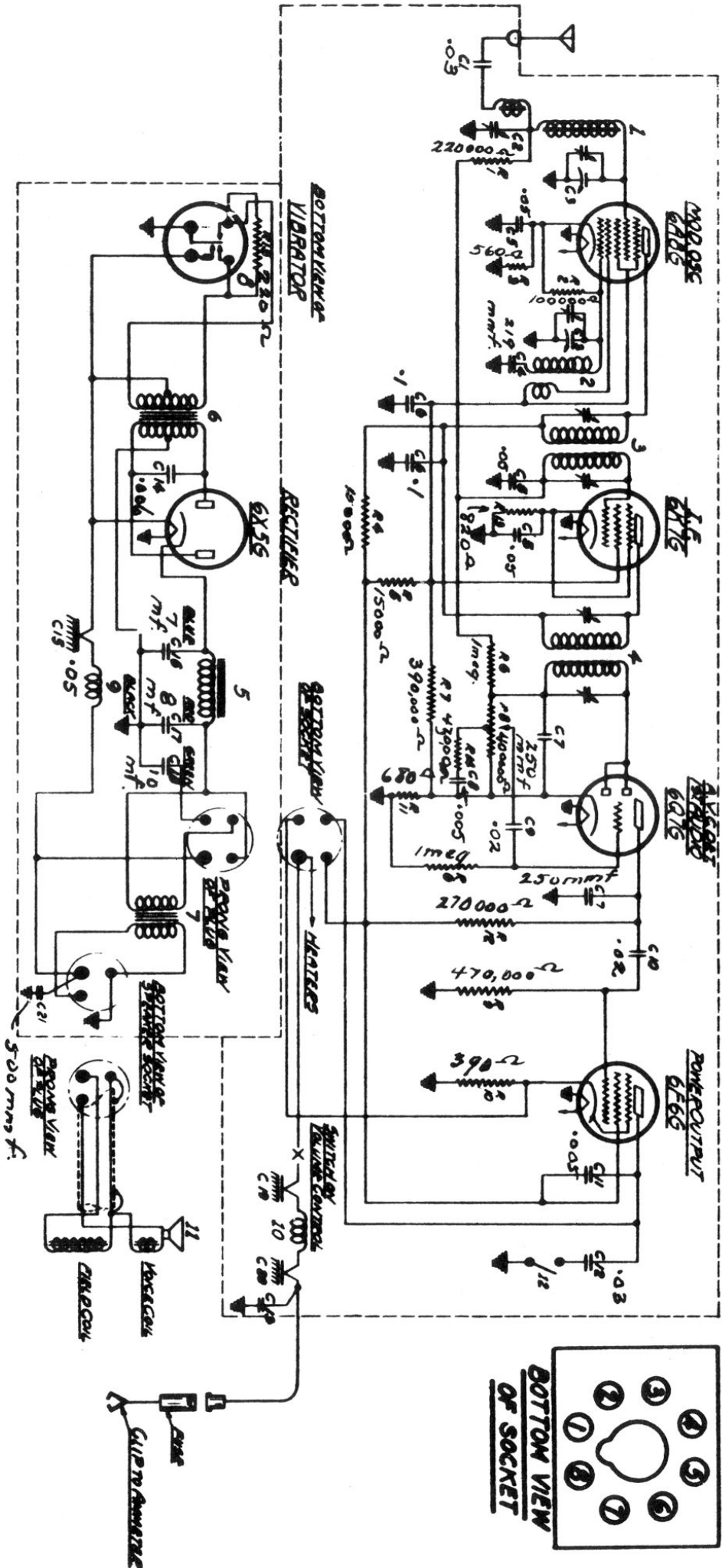
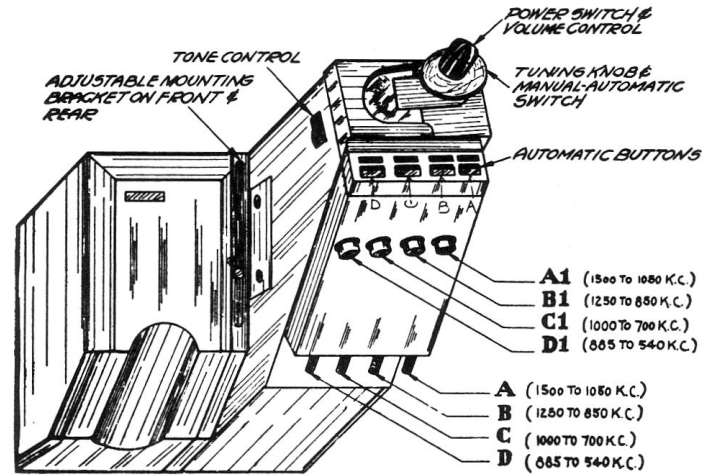
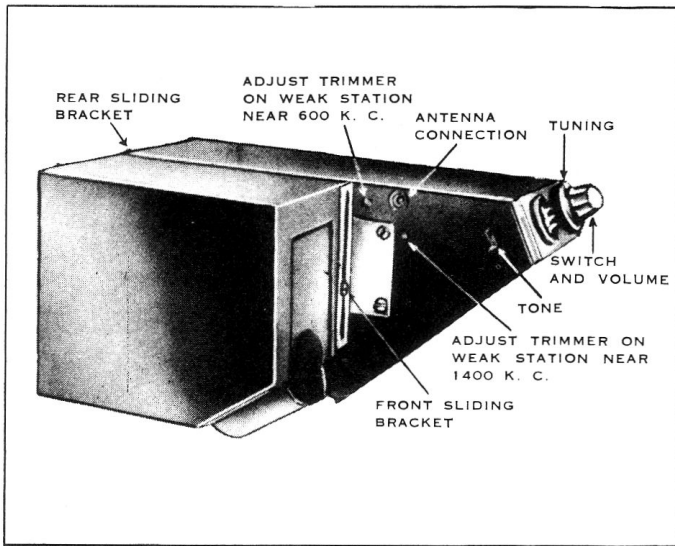


# Marconi Model 291 Automobile Radio



## Marconi Models 291, 294 Alignment Procedure

CONNECT SIG.GEN.TO	SET SIG. GEN. TO	SET GANG COND. TO	ADJUST TRIMMER	TRIMMER FUNCTION	ADJUSTMENT REMARKS
CG 6A8G	456 K.C.	MAX.CAP.	A B C D IN ORDER	#2 & #1 I.F.s.	MAX. OUTPUT
ANT.LEAD	1530 K.C.	MIN.CAP.	E	OSCILLATOR	TUNE SIGNAL
ANT.LEAD	1400 K.C.	1400 K.C.	F	ANT.STAGE	MAX. OUTPUT
ANT.LEAD	600 K.C.	600 K.C.	G	ANT.PADDER	MAX. OUTPUT



### VOLTAGE READINGS

#### SOCKET PINS TO CHASSIS MODEL 291 & 294

TUBE	FUNCTION	CAP	PIN 1	PIN 2	PIN 3	PIN 4	PIN 5	PIN 6	PIN 7	PIN 8
RVC 6A8G	Mixer Osc.	0	0	0	240	93	*	147	6	**
RVC 6K7G	I.F.Amp.	0	0	0	240	93	***	-	6	***
RVC 6Q7G	DET.AVC & AUDIO	0	0	0	112	0	0	-	6	1.8
RVC 6F6G	Output	-	0	0	235	250	0	-	6	16
RVC 6X5G	Rectifier	-	0	0	-	0	-	-	6	250

\* -5.8 V. (Manual) +4.2 V. (Automatic)  
 \*\* +4.4 V. (Manual) +5.0 V. (Automatic)  
 \*\*\* +5.2 V. (Manual) +4.9 V. (Automatic)

