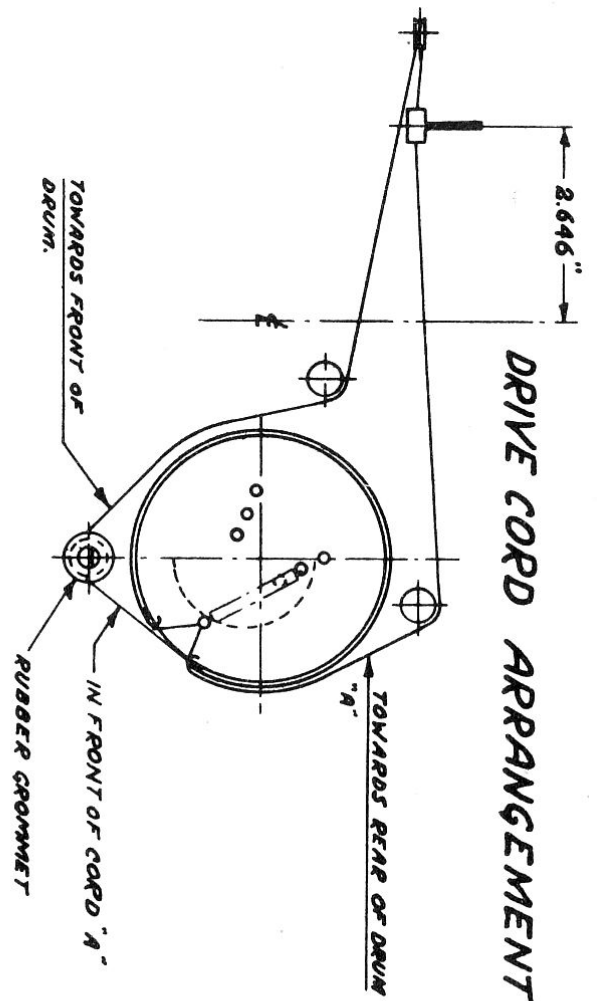


# Marconi Models 236, 236A, 264

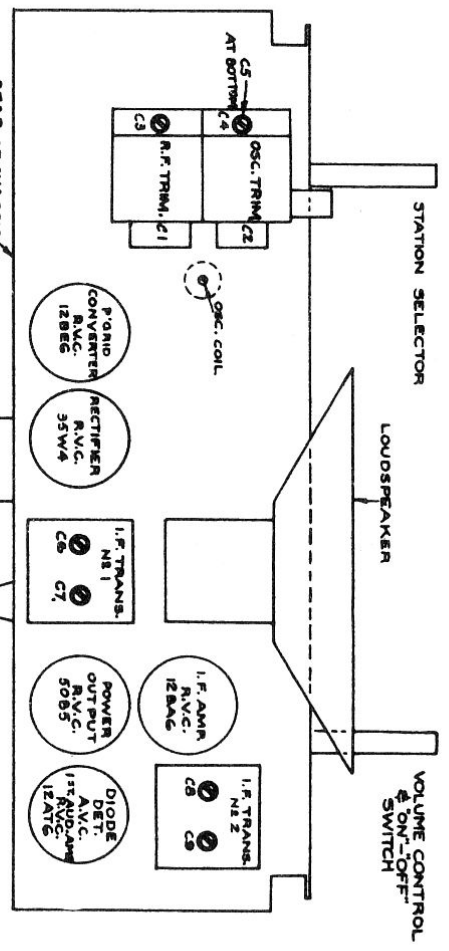
# DRIVE CORD ARRANGEMENT



ARRANGEMENT OF DRIVE CORD WITH COND. PLATES FULL IN & CURSOR AT FULL COUNTERCLOCKWISE POSITION OF ITS TRAVEL.

## Marconi Models 236, 236A, 264 Alignment Procedure

CONNECT S.G. OUTPUT TO	INPUT FREQUENCY	DIAL SETTING	ADJUST	CIRCUIT RESONATED	REMARKS
C.G.12BE6*	462.5	GANG AT MIN.	C9, C8, C7 and C6	I.F. STAGES	MAX. OUTPUT
A & G **	580 K.C.	580 K.C.	***OSCILLATOR CORE	OSCILLATOR	ADJUST FOR BEST COMPROMISE BETWEEN CALIBRATION AND TRACKING
A & G	1720	1720	C4	OSCILLATOR	MAX. OUTPUT
A & G	1600	1600	C3	R.F.	ROCK GANG FOR MAX. OUTPUT



\* Lug on R.F. Section of Gang Condenser Forms a convenient point of connection Apply Signal through a 0.1 Mfd. Condenser.

\*\* Before proceeding with R.F. Alignment, see that dial pointer is set over last graduation mark at low frequency end. (Gang to be at maximum capacity).

\*\*\*Do not undertake this operation, until you ascertain that C3 and C4 are in their approximate operating position.