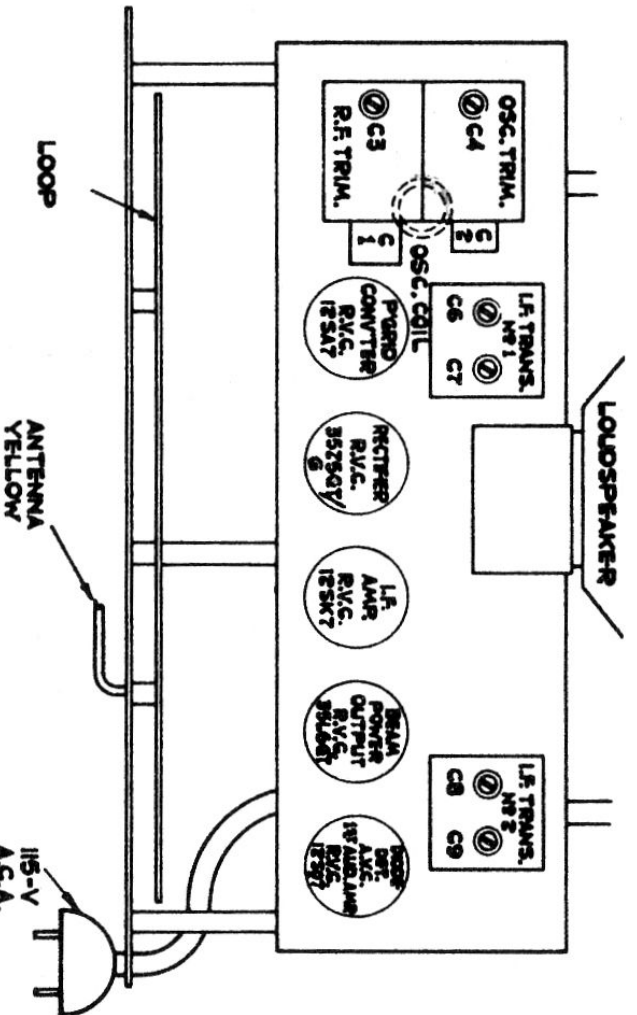
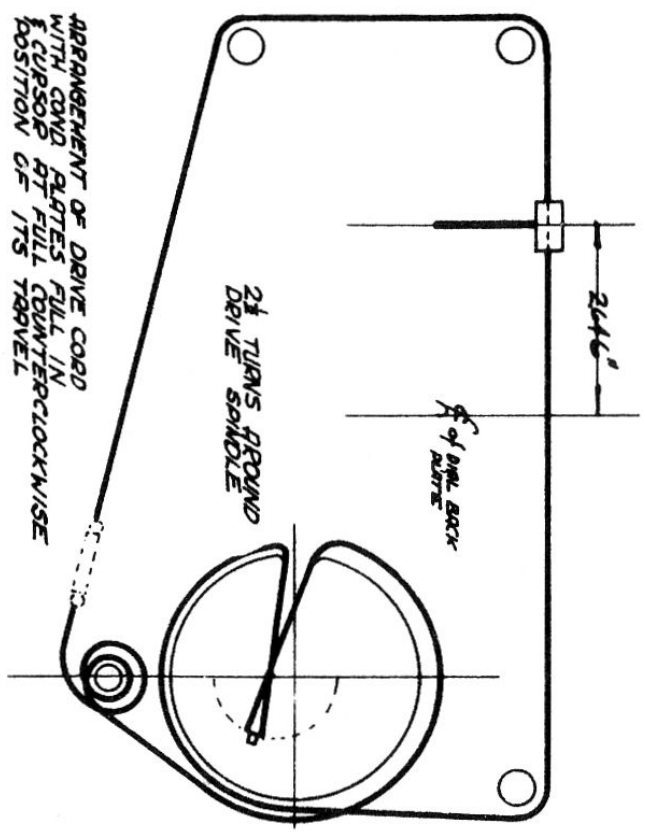


C6, C7, C8, C9 = 25 - 150PF
 (I.F. Transformer)
 M = 1,000,000 OHMS
 K = 1,000 OHMS
 ALL CAPACITORS MFD
 EXCEPT AS MARKED PF
 (PF = MMFD)

Marconi Model 216

Marconi Model 216 Alignment Procedure, Dial Cord & Layout



ALIGNMENT PROCEDURE

| CONNECT S.G. OUTPUT | INPUT FREQUENCY | RECEIVER DIAL SETTING | ADJUST | CIRCUIT RESONATED | REMARKS |
|---------------------|-----------------|-----------------------|-----------------|-----------------------|------------------------|
| # C.G. 12SA7 | 462.5 | Gang at min. | C9, C8, C7, C6, | No. 2 I.F. No. 1 I.F. | Adjust for Max. output |
| ## Ant. Lead | 1717 KC | " " " | C4 | Oscillator | Adjust for Resonance |
| " " | 1600 KC | 160 | C3 | R.F. | Adjust for Max. Output |

NOTE:- Ground lead from signal generator should be connected to chassis through a 0.1 Mfd. capacitor.

This connection to be made through a 0.1 Mfd. capacitor to lug on R.F. section of gang.

Before proceeding with R.F. alignment, see that pointer is set over last division on left hand side of dial scale with gang at maximum.