

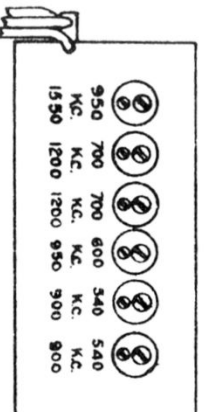
WIRE LEGEND

- "A" TINNED CU. BRAID 3/16 WIDE
- "B" NO.20 BARE TINNED SOLID CU. WIRE
- "C" V.H.R. #6420 FLEX. WIRE
- ALL OTHER WIRE TO BE V.H.R.-6420, SOLID WIRE.

NOTES

- ROTARY SWITCH IN COUNTER-CLOCKWISE POSITION.
- KNOB END VIEW IS SHOWN WITH CHASSIS RIGHT SIDE UP.
- ROTARY SWITCH IN S.W. POSITION.

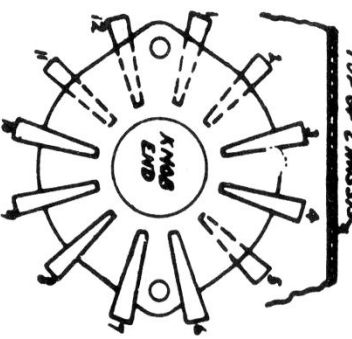
↓ DENOTES CHASSIS



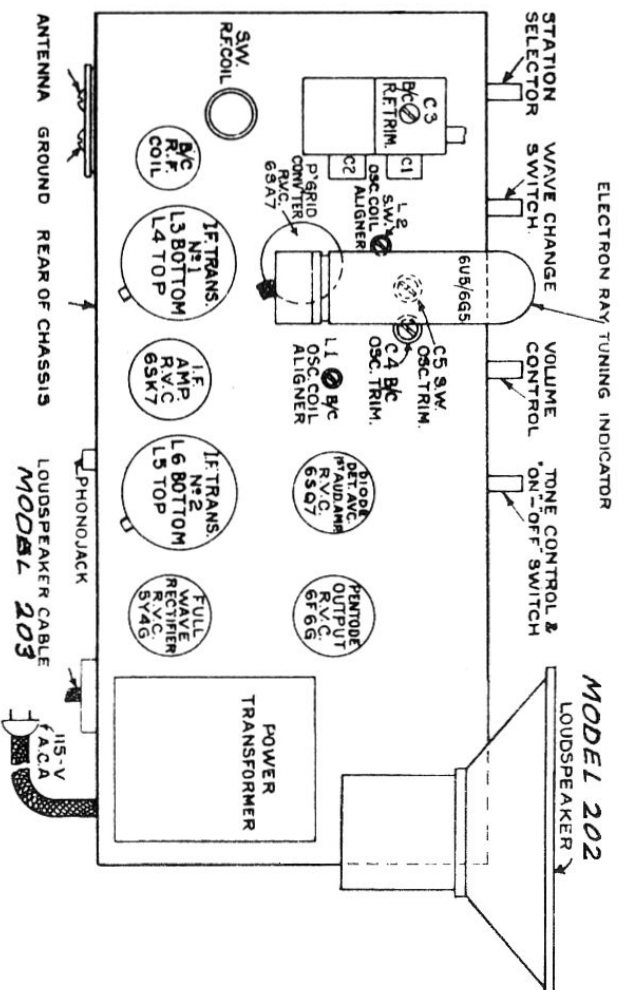
REAR OF AUTOMATIC TUNING UNIT

M = 1,000,000 OHMS
 K = 1,000 OHMS
 ALL CAPACITORS MFD EXCEPT AS MARKED PF (PF = MMFD)

Marconi Models 202, 203



Marconi Models 202, 203



SET BAND SWITCH TO	CONNECT S.G. OUTPUT	INPUT FREQUENCY	DIAL SETTING	DRUM IND.	ADJUST	CIRCUIT RESONATED	REMARKS
B.C.	***C.G.6SA7	462.5 KC	*		L6 & L5 L4 & L3	#2 I.F. #1 "	Max. Output "
** B.C. B.C. B.C.	A & G A & G A & G	1728 KC 1600 KC 580 KC	Gang at min. 160 58	163.5 23.5	C4 C3 L1	B.C.Osc. R.F. B.C.Osc. (Padder)	Resonate Max. Output Rock Gang
S.W. S.W.	A & G A & G	16 MC 6 MC	16 MC 6 MC	155.8 21	C5 L2	S.W.Osc. S.W.Osc. (Padder)	Max. Output Rock Gang

* Short Osc. Section of gang through 0.1 Mfd.
 ** Before proceeding with R.F. Alignment, see that dial pointer is set to last calibration mark at left of dial with gang at maximum capacity.
 *** Lug on R.F. Section of gang forms suitable point of connection. For oscillograph alignment, connect oscillograph input across volume control (R.8) and adjust for overlapping double image of max. amplitude.

If the chassis is realigned in the cabinet, the above dial settings may be followed. If however, the chassis is removed, the dial scale is left attached to the cabinet. In order to guide servicemen working under the latter circumstances, a scale, calibrated in 180 degrees, has been attached to the back of the dial drum. A pointer should be improvised from a piece of stiff wire and with the gang capacitor set at maximum capacity (plates fully meshed) the improvised pointer should be set to "0" degrees. The Drum indicator readings shown in the alignment chart can then be followed. After chassis has been realigned and installed in cabinet set dial pointer to last calibration mark on low frequency end with gang capacitor at maximum.