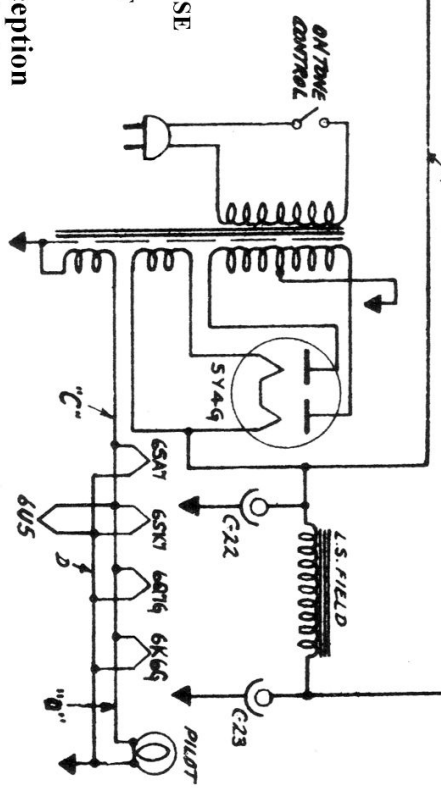
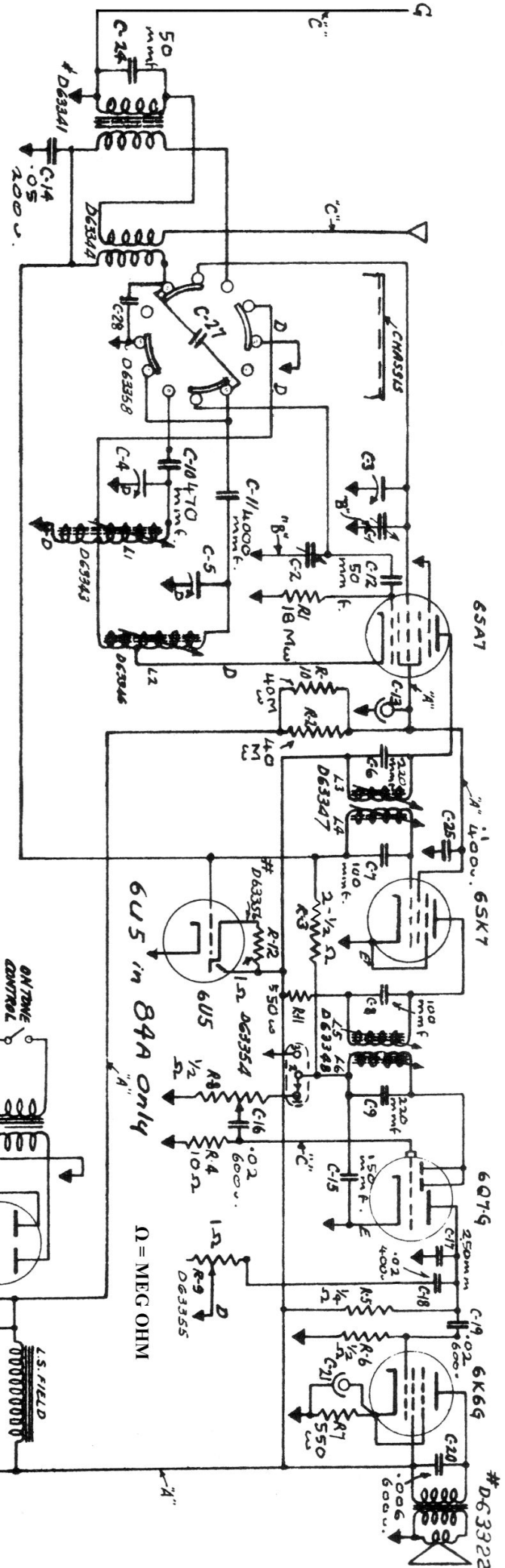


# Marconi Models 184 & 184A

**NOTES**  
 ↓ DENOTES CHASSIS  
 ROTARY SWITCH SHOWN IN COUNTER-CLOCKWISE POSITION.  
 KNOB END VIEW IS SHOWN WITH CHASSIS RIGHT SIDE UP.  
 ROTARY SWITCH IN S.W. POSITION.  
 M.184A is identical to Model 184, with the exception of an additional tube type 6U5 (Tuning Indicator) - and larger loudspeaker.

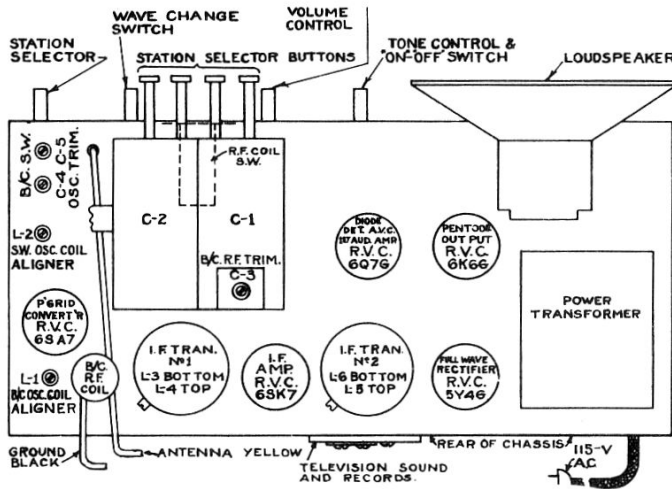


# Marconi Alignment Procedure Models 184, 184A

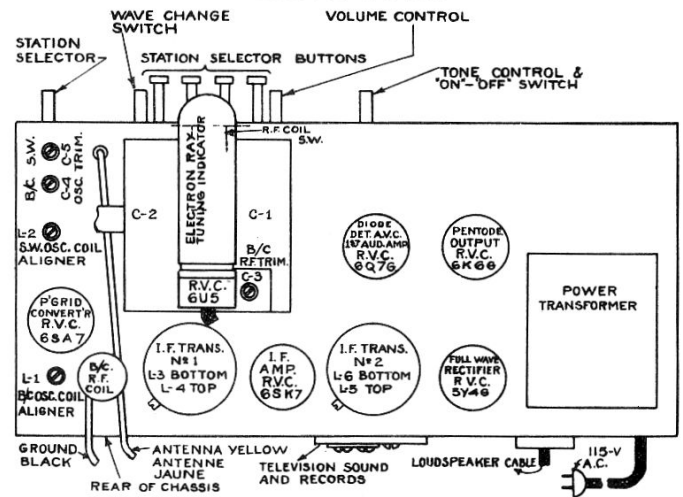
SET BAND SWITCH TO	CONNECT S.G. OUTPUT	INPUT FREQUENCY	DIAL SETTING	ADJUST	CIRCUIT RESONATED	REMARKS
B.C.	***C.G. 6SA7	462.5 KC	*	L6 & L5 L4 & L3	No. 2 I.F. No. 1 I.F.	Max. Output " "
**B.C.	A & G	1600 KC	160	C4	B.C. Osc.	Resonate Max. Output Rock Gang
B.C.	A & G	1600 KC	160	C3	B.C. R.F.	
B.C.	A & G	580 KC	58	L1	B.C. Osc. (Padder)	
S.W.	A & G	16 MC	16 MC	C5	S.W. Osc.	Max. Output (SW Osc.Padder)
S.W.	A & G	6 MC	6 MC	L2	S.W. Osc.	

\* Short Osc. Section of gang through 0.1 Mfd.  
 \*\* Before proceeding with R.F. Alignment, see that dial pointer is set to last calibration mark at left of dial with gang at maximum capacity.  
 \*\*\* Lug on R.F. Section of gang forms suitable point of connection. For oscillograph alignment, connect oscillograph input across volume control (R.8) and adjust for overlapping double image of max. amplitude.

### MODEL 184



### MODEL 184A



## AUTOMATIC TUNING

These receivers incorporate a four-button mechanical tuner. The procedure for adjusting is as follows:-

- (1) Remove knob from shaft to be adjusted.
- (2) Loosen shaft by unscrewing same.
- (3) Tune desired station with dial tuning knob.
- (4) Hold knob firm and depress shaft to fullest extent.
- (5) While still depressed tighten shaft. If the mechanism tends to bind, lubricate all bearings. Should this fail to relieve the stiffness, we recommend placing the drive spindle and bracket with Part Nos. 63337 Drive Spindle and Bracket Assy. and 89975 Bushing. The bushing should be pressed into the eyelet already on the chassis. This will form the rear spindle bearing and render smooth operation.

## VOLTAGE READINGS SOCKET PINS TO CHASSIS

TUBE	1	2	3	4	5	6	7	8
6SA7	0	0	250	90	0	0	6.3 AC	0
6SK7	0	0	0	0	0	90	6.3 AC	250
6Q7G	0	0	80	0	0	0	6.3 AC	0
6K6G	0	0	240	250	0	-	6.3 AC	17
5Y4G	-	-	320 AC	-	320 AC	*	300	300

\* Used as anchoring lug.

# Marconi Models 184, 184A