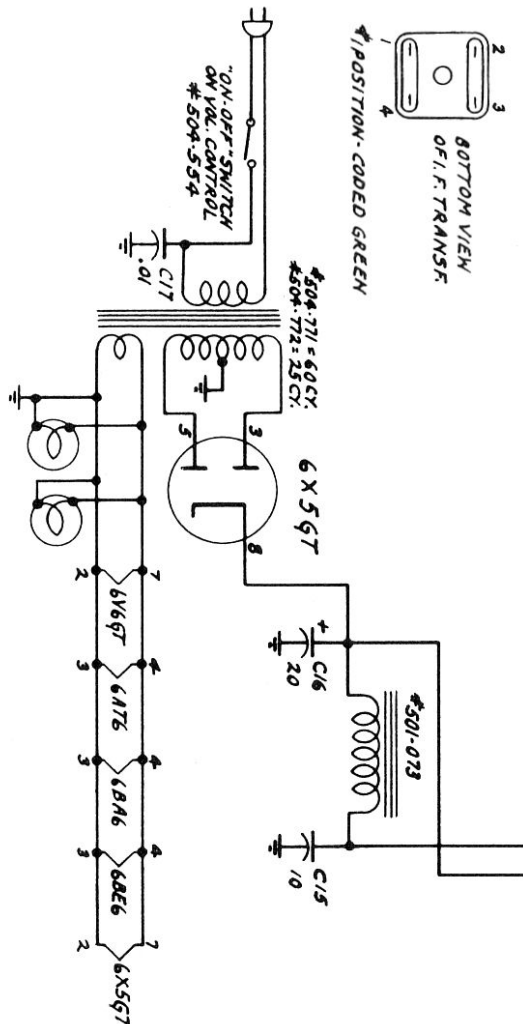
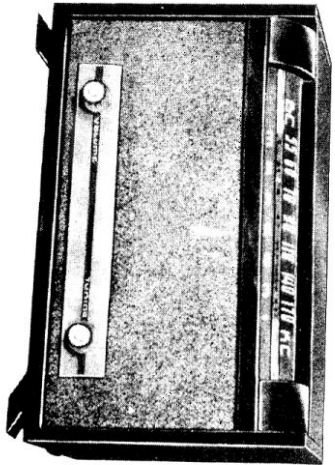


Fig. 1

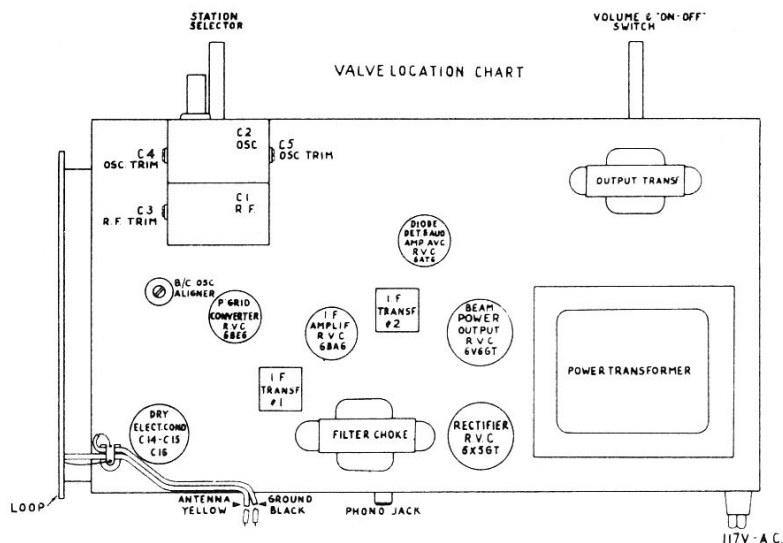
Marconi Model 291 (1950)



BOTTOM VIEW
OF I.F. TRANSF.
POSITION-CODED GREEN

"ON-OFF-SWITCH"
ON VOL. CONTROL
#504-554

Marconi Model 291 (1950)

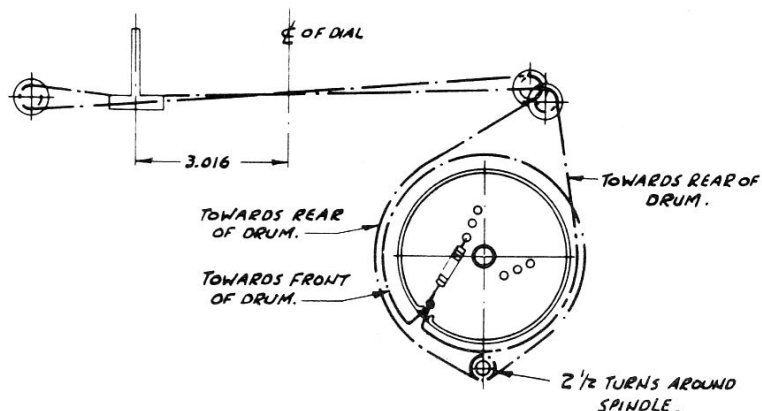


Alignment Procedure Marconi Model 291

Maximum performance depends on accurate alignment of the R.F. and I.F. circuits of the receiver; therefore, follow these instructions and the method outlined in the alignment chart carefully.

- A. Make all alignment adjustments to the receiver with the volume control set at maximum.
- B. Connect the output meter across the voice coil terminals.
- C. Keep the output of the signal generator as low as is consistent with serviceable meter reading.

NOTE: Four index marks are provided on the upper edge of dial backplate to indicate respectively, starting from left end: gang fully meshed, 580, 1000 and 1500 Kc.



DRIVE CORD ARRANGEMENT

ARRANGEMENT OF DRIVE CORD WITH CONDENSER PLATES IN & CURSOR AT FULL COUNTERCLOCKWISE POSITION OF IT'S TRAVEL. ON HOLE AT EXTREME LEFT OF DIAL BACK PLATE.

CONNECT S.G. OUTPUT TO	INPUT FREQUENCY	DIAL SETTING	ADJUST	CIRCUIT RESONATED	REMARKS
# C.G. 6BE6	455 K.C.	GANG AT MIN.	TOP & BOTTOM ALIGNERS	NO. 2 I.F. NO. 1 I.F.	ADJUST FOR MAXIMUM OUTPUT
##A & G LEADS	1720 K.C.	1720 K.C.	C4	OSCILLATOR	ADJUST FOR MAXIMUM OUTPUT
A & G LEADS	1500 K.C.	1500 K.C.	C3	R.F.	ADJUST FOR MAXIMUM OUTPUT
A & G LEADS	580 K.C.	580 K.C.	OSC. CORE	OSC. PADDER	ROCK GANG FOR MAXIMUM OUTPUT

LUG ON R.F. SECTION OF GANG FORMS SUITABLE POINT OF CONNECTION.

BEFORE PROCEEDING WITH R.F. ALIGNMENT, SEE THAT DIAL CURSOR IS SET ON HOLE AT EXTREME LEFT OF DIAL BACKPLATE WITH GANG AT MAXIMUM.