

THE HAMMOND ORGAN

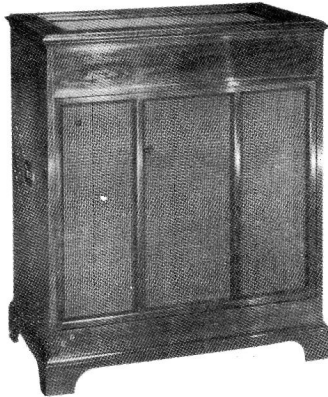
-11-

PR 20 TONE CABINET



H A M M O N D O R G A N C O M P A N Y

4200 WEST DIVERSEY AVENUE • CHICAGO 39, ILLINOIS



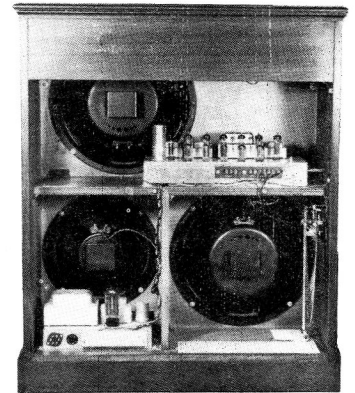
PR 20 FRONT

PR-20 TONE CABINET

20 Watt Output
INPUT WATTAGE 185

Equipped with two 15" speakers for bass tones and two 12" speakers for the treble tones. They provide three dimension amplification which creates a beautiful re-verberation effect in Stereo. These cabinets feature the new and improved Hammond Reverberation control for both bass and treble tones. Convenient outside controls make it easy to change the degree of reverberation for each.

DIMENSIONS: 31-1/2" Wide 37-1/2" High 18" Deep
WEIGHT: 118 Lbs.



PR 20 REAR

tone cabinet instructions

MODELS PR-20 AND PR-40

Refer to card on underside of bench top for console installation and oiling instructions.

CAUTION PACKING FOR MOVING OR SHIPMENT

The Reverberation Unit must be locked before moving cabinet or unit; otherwise, delicate parts will be damaged because of bouncing of the three coil springs when hanging free. To lock the Reverberation Unit, insert screwdriver in slot at end of lock rod "A" shown in Fig. 1 and turn 1/4 turn counterclockwise. If cabinet has rear grille, an opening is provided in grille cloth to allow access to lock rod.

Never remove tubes from their sockets without first turning off power at console.

INSTALLATION

Unlock Reverberation Unit by inserting screwdriver in slot at end of lock rod "A" shown in Fig. 1 and turning 1/4 turn clockwise so that slot is vertical. If cabinet has rear grille, an opening is provided in grille cloth to allow access to lock rod.

Cabinet must be level and must not rock. Floor must be firm to avoid vibration. Connect console-to-cabinet cable as shown in Fig. 1.

Additional tone cabinets may be connected to this unit by using a 5-conductor cabinet-to-cabinet cable connected to socket marked "ADDITIONAL POWER AMPLIFIERS" in Fig. 1. Signal at this point comes directly from console and does not have reverberation. If additional cabinets are not Type PR or QR, inquire of your Hammond dealer or the factory Service Department on use of isolating transformer. If total input wattage of all cabinets exceeds rating on console nameplate, auxiliary power relay must be provided.

THREE CHANNELS

The amplifier in this tone cabinet has three channels. The bass channel drives two 15" speakers and responds only to frequencies below 200 cycles. The treble reverberation channel drives the lower 12" speaker and covers the range above 200 cycles. The treble direct channel, driving the upper 12" speaker, also covers the range above 200 cycles.

REVERBERATION SWITCHES

The relative amount of reverberation for the treble and bass channels can be selected by two recessed switches located on the side of the cabinet. Each switch has four positions. When both switches are in the OFF position, the reverberation effect is completely eliminated and all three channels carry the direct signal from the console.

A Reverberation Switch Kit can be obtained to turn the reverberation effect on and off from the console. Ask any Hammond dealer for details.

ROOM SIZE SWITCH

The room size control switch located on the amplifier, "B" in Fig. 1, is provided with a slot for adjustment of the bass volume to compensate for variations in room size. When used in a small room, it should be adjusted to reduce the bass volume for best tonal balance. Approximate settings for rooms with average furnishings will be as follows:

MODEL PR-40

VOLUME OF ROOM	POSITION OF SWITCH
over 16,000 cu. ft.	fully counterclockwise
8000 to 16,000 cu. ft.	next to counterclockwise
4000 to 8000 cu. ft.	next to clockwise
2000 to 4000 cu. ft.	fully clockwise

MODEL PR-20

VOLUME OF ROOM	POSITION OF SWITCH
over 2000 cu. ft.	counterclockwise
2000 cu. ft. or less	clockwise

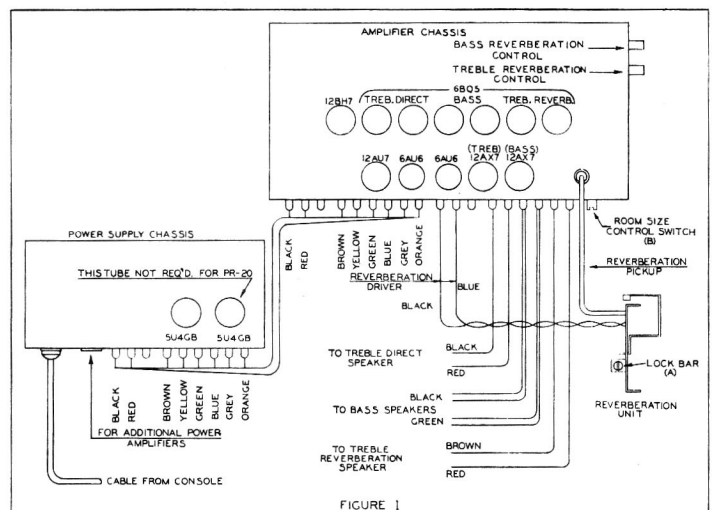
LOCATION OF TONE CABINET

The back of this tone cabinet must be at least 1 1/2" from the wall in order to provide adequate ventilation. The location of the tone cabinet in the room is of great acoustic importance. Consult a Hammond service man for recommendations.

The cabinet must always be placed at some distance from the console, not only for acoustic reasons, but also because the magnetic field from the amplifier may produce a hum in the console circuits if

the two are very close together. In case of hum, make certain that no piece of electrical apparatus having a strong magnetic field is close to the console; for example, an electric clock or a fluorescent light on the console can, in some cases, produce a loud hum in the speakers.

NOTE:—Always supply model designation and serial number when writing the factory regarding the console or the tone cabinet. This information can be obtained from the nameplates.



AO-22763-0

HAMMOND ORGAN COMPANY

4200 W. Diversey Ave.

Chicago 39, Illinois

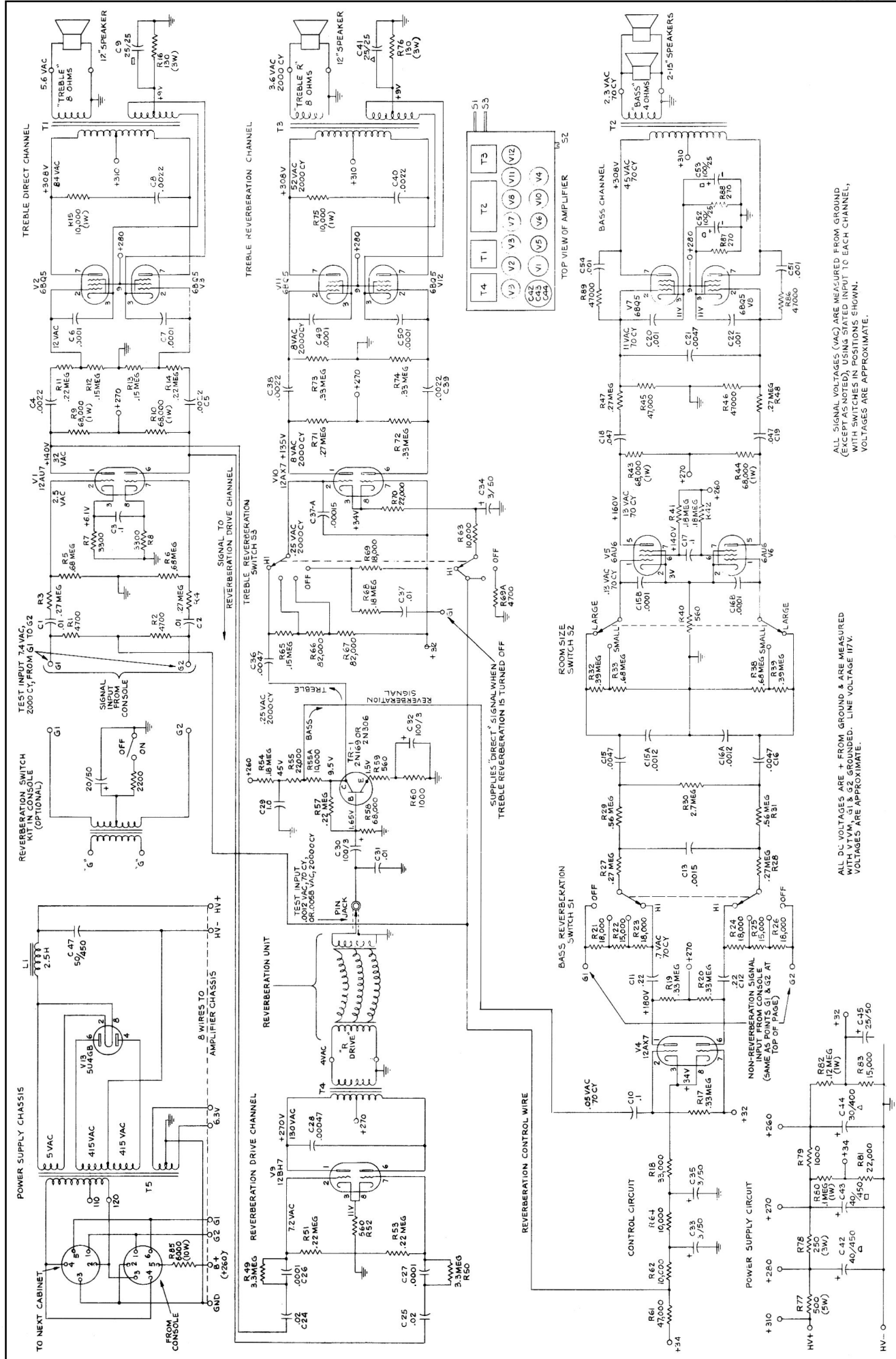


FIG. 28A AO-33-2 AMPLIFIER USED IN PR-20 TONE CABINET