

THE HAMMOND ORGAN

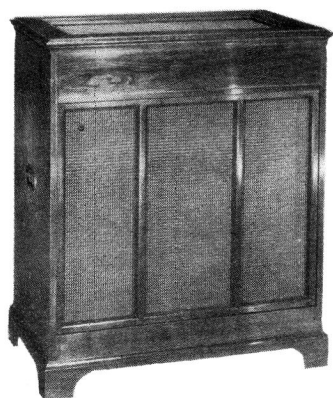
-11-

P40-Q40 TONE CABINET

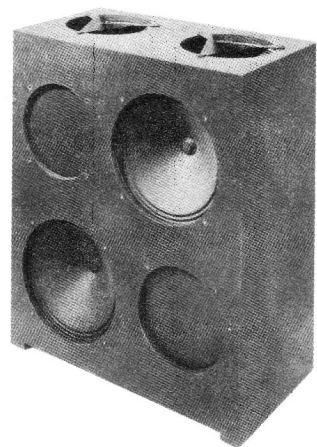


H A M M O N D O R G A N C O M P A N Y

4200 WEST DIVERSEY AVENUE • CHICAGO 39, ILLINOIS



P40 FRONT



Q40 FRONT

P-40, Q-40 TONE CABINET

40 Watt Output
INPUT WATTAGE

Equipped with a two channel amplifier, two 15" speakers and two 12" speakers serving the bass and treble channels respectively. This tone cabinet in conjunction with a Hammond tone cabinet with reverberation can add the additional power required for larger installation at a minimum cost. Can also be used alone where sufficient natural reverberation is evident.

DIMENSIONS: 31-1/2" Wide 37-1/2" High 18" Deep

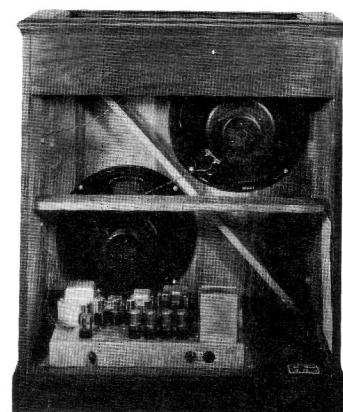
WEIGHT 126 LBS.

The Q40 is electrical similar to the P40 but with utility type cabinet is only used where appearance is not a consideration such as tone and reverberation chambers.

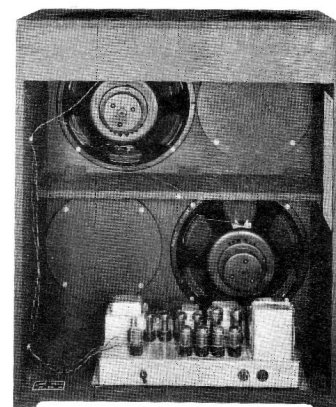
The treble speakers are normally mounted in the top. In unusual installation where the ceiling is very low, or cabinets are stocked or radiation is otherwise restricted, it is possible to move these speakers to the holes provided in the front. The metal diffusers in front of the speakers must also be moved and the wooden covers must be attached under the top to close the holes.

DIMENSIONS: 31" Wide 36-5/8" High 17-1/4" deep

WEIGHT: 110 LBS.



P40 REAR



Q40 REAR

tone cabinet INSTRUCTIONS

MODELS P-40 AND Q-40

IMPORTANT

When cabinet is to be shipped, or moved from room, tighten nuts at each end of spring mounted amplifier to prevent damage.

Never remove tubes from their sockets without first turning off power at console.

Always supply model designation and serial number when writing factory regarding console or tone cabinet. This information can be obtained from nameplates.

INSTALLATION

Set up cabinet for operation as follows:

1. Loosen nut at each end of amplifier until amplifier floats freely on mounting springs. Leave each nut on stud with about 1/16" clearance to chassis. Failure to loosen nuts may cause hum in tone cabinet.

In cases where amplifier is held down with 4 additional screws at corners, these screws and 4 tapped plates underneath shelf should be removed and discarded.

2. Connect console-to-cabinet cable as shown in Figure 1.

3. Model Q-40 is intended for use in reverberation or tone chamber. The two treble speakers are normally mounted in the top. In an unusual installation where ceiling is very low, or cabinets are stacked, or radiation from top is otherwise restricted, it is possible to move these speakers to holes provided in the front. The metal diffusers must

be moved with the speakers, and wooden covers from front holes should then be used to seal top holes.

Additional tone cabinets may be connected to this unit by using 5-conductor cabinet-to-cabinet cable connected to socket marked "Additional Power Amplifiers" in Fig. 1. Signal at this point comes directly from console.

If total input wattage of all cabinets exceeds rating on console nameplate, auxiliary power relay must be provided.

TREBLE AND BASS CHANNELS

The amplifier in this tone cabinet incorporates dividing networks, so that the two 15" bass speakers respond only to frequencies below 200 cycles and the two 12" treble speakers cover the range above 200 cycles.

BASS CORRECTION

"Bass Correction" switch on amplifier is used to compensate for variations in room size. When cabinet is used in a small room, switch should be adjusted to reduce bass volume for best tonal balance. Approximate settings for rooms with average furnishings will be as follows:

(If cabinet is placed in a tone chamber, these figures apply to size of listening room.)

VOLUME OF ROOM	SWITCH POSITION
Over 16,000 cubic feet	0
8,000 to 16,000 cubic feet	-3
4,000 to 8,000 cubic feet	-6
2,000 to 4,000 cubic feet	-10

LOCATION OF TONE CABINET

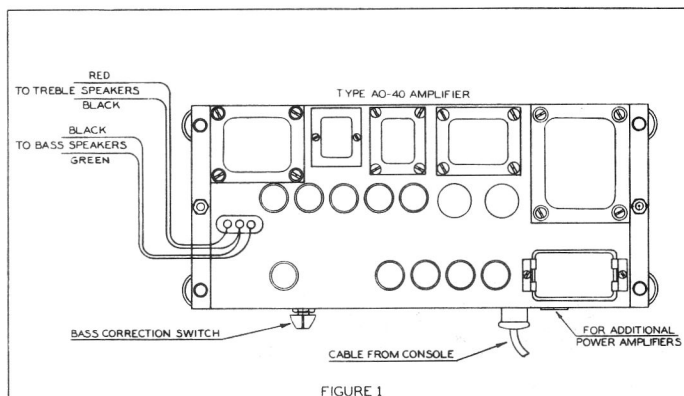
The back of this tone cabinet must be at least 1 1/2 inches from the wall in order to provide adequate ventilation.

The location of the tone cabinet in the room is of great acoustic importance. Consult a Hammond service man for recommendations. The cabinet must always be placed at some distance from the console, not only for acoustic reasons but also because the magnetic field from the amplifier can produce a hum in the console circuits

if the two are very close together.

In case of hum, make certain that no piece of electrical apparatus having a strong magnetic field is close to the console; for example, an electric clock or a fluorescent light on the console can, in some cases, produce a loud hum in the speakers.

Some hum in the bass channel may be caused by unbalanced 6V6 tubes. Four new tubes of same make will generally be satisfactorily balanced. Sometimes hum level can be reduced by interchanging 6V6 tubes.



AO-23445-0

HAMMOND ORGAN COMPANY

4200 W. Diversey Ave.

Chicago 39, Illinois

