

INSTRUCTION LEAFLET & SERVICE INFORMATION

—FOR THE—

Electrohome Custom Built "PA-400"

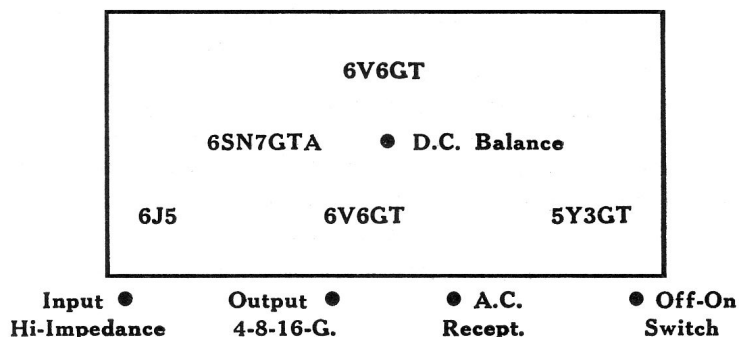
SLAVE TYPE

Hi - Fi

5-TUBE POWER AMPLIFIER

— FEATURING —

- High Impedance Input Jack
- Push-pull Output
- Switched AC Receptacle
- DC Balance Control
- Nominal Output Impedance Taps for 4, 8, 16 ohms
- AC Power Supply 110 - 120 Volts 25 - 60 Cycles



MANUFACTURED BY

**Dominion Electrohome Industries
LIMITED**

KITCHENER — ONTARIO — CANADA

Manufacturers of

Custom Built Cabinets and Hi-Fi Custom Equipment, Radio and Television Receivers,
Car, Radios, Air Conditioners, Fans, Deilcraft Fine Furniture.

SPECIFICATIONS

Power Output — Nominal undistorted at 1000 cps—10 watts., Maximum—15 watts.

Frequency Response — 1W level — ± 1 db., 30 cps. to 15,000 cps.

Harmonic Distortion — 1% at 10 W. level at 1000 cps.

Intermodulation Distortion — Less than 1% at 1W level (60 and 3000 cps. 4:1)

Hum and Noise Level — 80 db. below rated output.

Voltage Input Required for Rated Output — .5 V. A.C. Nominal.

High Impedance Input Jack.

Output Impedance — 4, 8, 16 ohms.

Feedback — 22 db. over 3 loops.

Power Supply — 25-60 cycle A.C. **Power Consumption** — 62 watts.

CHASSIS INSTALLATION (See Cut)

This chassis has been designed for mounting in custom cabinets, bookcases, wall panels, etc. in conjunction with other associated units, such as tuners, phono preamps., etc. It is important that it be located to insure proper ventilation, as the tubes and power transformer give off considerable heat which should be dissipated to insure normal life of the component parts used in the chassis.

The chassis must be mounted on the base plate supplied to meet CSA requirements but the feet may be removed and replaced by 6-32 screws to facilitate mounting of the chassis on a shelf.

NOTE: If the chassis is to be installed in a totally enclosed compartment, the compartment MUST BE AT LEAST 3 CU. FT. to meet CSA requirements.

WARNING — POWER SUPPLY

This amplifier is intended to be operated only on the power supply specified on front page. Before connecting make sure that the voltage and frequency shown on the unit correspond to those of your local power company.

Included in this amplifier are:

(a), An AC receptacle (rear of chassis) switched on or off by the AC switch has been added to provide a switched source of 117V AC voltage for use with tuners, changers, etc., the power requirements of which **DO NOT EXCEED 200 WATTS MAXIMUM.**

(b) Speaker terminals (on rear of chassis) for 4, 8 or 16 ohm output impedance to permit the amplifier to be used with speakers varying from conventional standard single type to coaxial or multiple speakers, with crossover networks to provide proper balance of treble and bass frequencies.

(c) DC Balance Control. A DC balance control has been incorporated in this amplifier to permit proper balance of output circuitry resulting in minimum distortion.

THIS CONTROL SHOULD ONLY BE ADJUSTED BY A QUALIFIED SERVICEMAN.

OFF-ON AC SWITCH

An AC OFF-ON Toggle Switch is located on the chassis. This switch is provided to permit the amplifier to be switched off, separate from other equipment. If the amplifier is used with equipment which has a switched AC receptacle, the amplifier line cord should be plugged into that receptacle and the toggle switch left turned on.

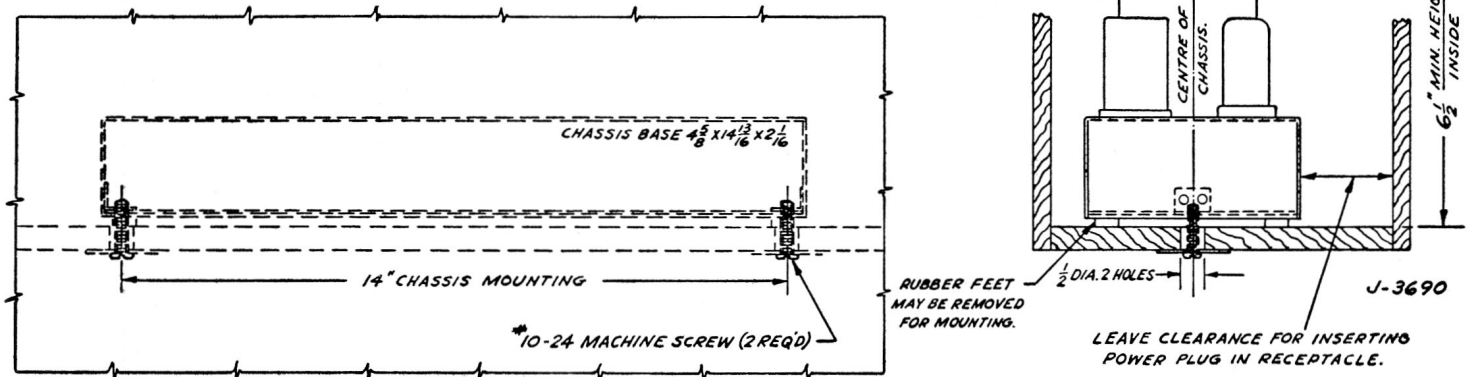
A Word of Caution

No amplifier can give high-fidelity reproduction unless three precautions are taken:

- (1) The input to the amplifier must be of high-fidelity quality.
- (2) The speakers, whether single, dual, coaxial, with or without cross-over networks, must be properly matched and capable of reproducing the distortion-free output of the amplifier.
- (3) The speaker enclosure or enclosures must be properly designed and acoustically treated for true tonal reproduction.

The components in this amplifier have been carefully chosen, as regards values, tolerances and types to give the maximum in the way of ultimate wide frequency response. When servicing is required due consideration must be given to the values originally specified and exact replacements made, if at all possible.

NOTE: IF THIS UNIT IS TO BE INSTALLED IN A TOTALLY ENCLOSED COMPARTMENT, THE VOLUME OF THE COMPARTMENT MUST BE AT LEAST 3 CU. FT. TO MEET CSA REQUIREMENTS.



WARRANTY

The manufacturer warrants each new Custom Built Chassis for a period of ninety (90) days after delivery to the dealer's original customer, to be free from defects in material and workmanship under normal home use and service. This warranty shall apply only to the Custom Built Chasses which have not been repaired or altered in any way so as to effect their reliability. It shall apply only to Custom Built Chassis which have not been subject to misuse, neglect or accident, or which have not been connected or installed otherwise than in accordance with the manufacturer's instructions, and on which the Serial Number has not been altered, defaced or removed.

SERVICE POLICY

Other than the cost of replacement parts, supplied by the manufacturer, the dealer or service technician who sells the Custom Built Chassis will absorb all expense involved in maintaining the Custom Built Chassis in normal operating condition during the warranty period, and on any complete Custom Built Chassis returned to the manufacturer for repairs, a charge will be made for the labour involved in affecting necessary repairs or replacements. All defective parts must be forwarded to the manufacturer, transportation charges prepaid, and should be accompanied with the following information:-

- Name and address of dealer,
- Model and Serial Number of Chassis,
- Date of Sale by the dealer,
- Nature of defect,
- Name and address of dealer's customer.

The manufacturer is not liable for damages incurred during transportation. All claims for said damages must be entered by the recipient of such merchandise with the carrier at its destination.

SERVICE REPLACEMENT PARTS LIST

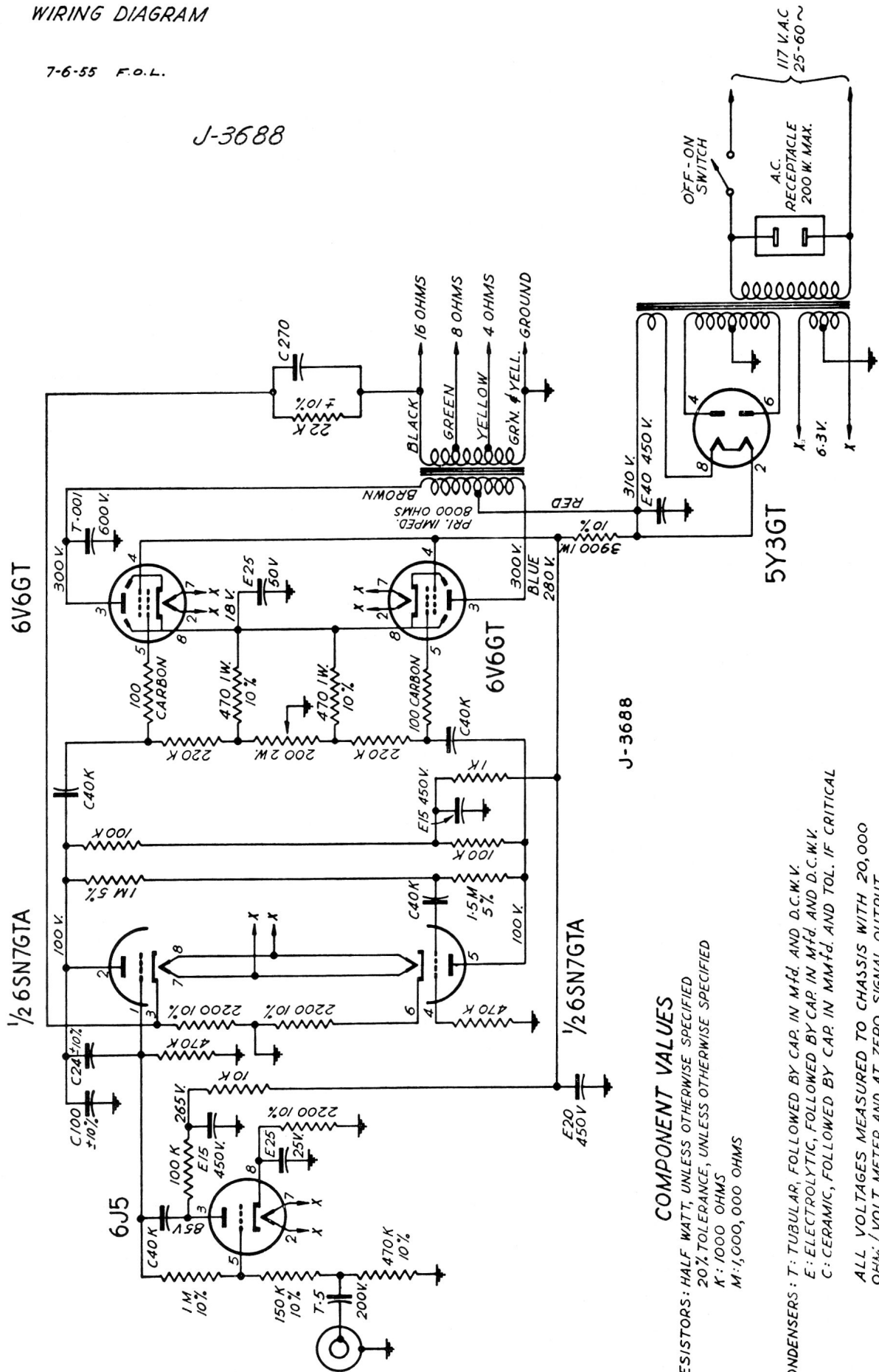
When writing for service information or parts please quote model and serial number.

- G-503.....Triple Electrolytic Cond.
- G-528-1.....Single Electrolytic Cond.
- G-591.....Dual Electrolytic Cond.
- G-611.....04 ufd. 500 V Disc. Ceramic Cond.
- G-613......47 — .5 ufd. 200V Special Tubular Cond.
- LK-586-1.....Power Transformer 25/60 Cycle
- LK-573-1.....Output Transformer
- Q-292.....Toggle Switch S.P.S.T.
- R-391-2.....Potentiometer (DC Balance)

PA-400
WIRING DIAGRAM

7-6-55 F.O.L.

J-3688



COMPONENT VALUES

RESISTORS: HALF WATT, UNLESS OTHERWISE SPECIFIED
20% TOLERANCE, UNLESS OTHERWISE SPECIFIED
K: 1000 OHMS
M: 1,000,000 OHMS

CONDENSERS: T: TUBULAR, FOLLOWED BY CAP. IN MFD. AND D.C.W.V.
E: ELECTROLYTIC, FOLLOWED BY CAP. IN MFD. AND D.C.W.V.
C: CERAMIC, FOLLOWED BY CAP. IN MMFD. AND TOL. IF CRITICAL
ALL VOLTAGES MEASURED TO CHASSIS WITH 20,000 OHM_i / VOLT METER AND AT ZERO SIGNAL OUTPUT.