

INSTRUCTION LEAFLET & SERVICE INFORMATION

—FOR THE—

Electrohome

CUSTOM BUILT - "PA-200"

6-Tube Audio Amplifier

featuring

- Four position Input Selector Switch.
- Three Separate Input Jacks.
- Separate Bass and Treble Tone Controls.
- Master Volume Control.
- Hum Balance Control.
- Preamplifier for low or high level magnetic type cartridges.
- 4, 8 and 16 ohm output impedance taps.
- Push-pull Amplifier output circuit for 10 watts undistorted output.

MODEL	VOLTAGE	FREQUENCY
PA-200	110-120	25-60 Cycles

MANUFACTURED BY

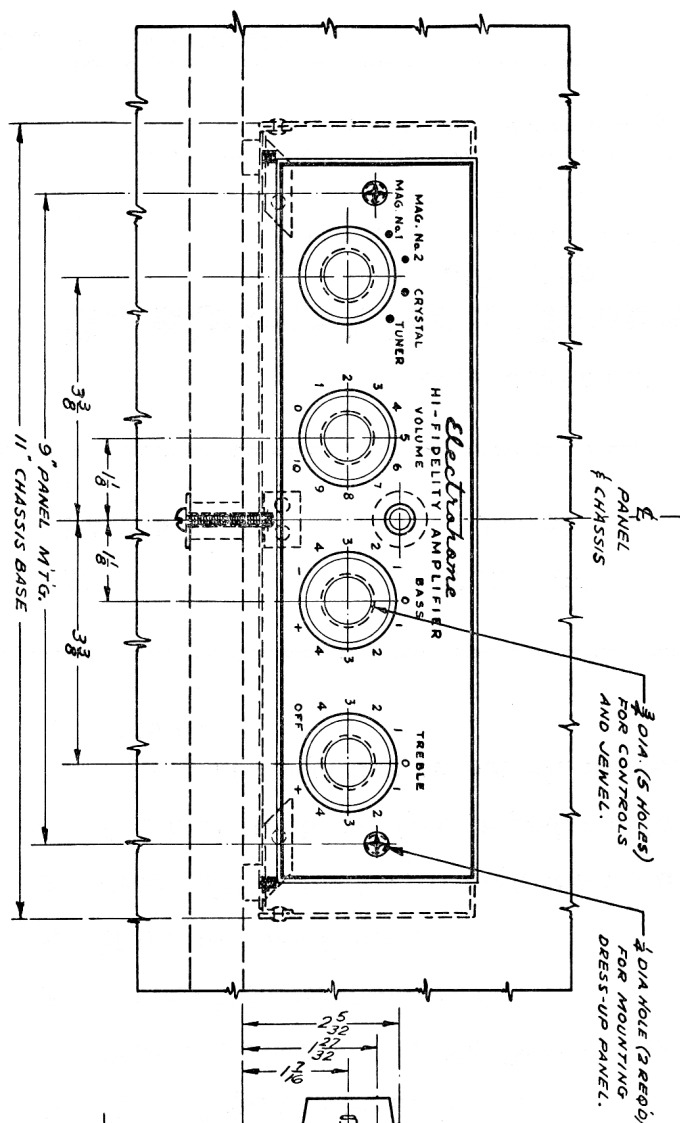
**Dominion Electrohome Industries
LIMITED**

KITCHENER - ONTARIO - CANADA

Manufacturers of

Radio and Television Receivers — Air Conditioners — Fans

Beilcraft Fine Furniture

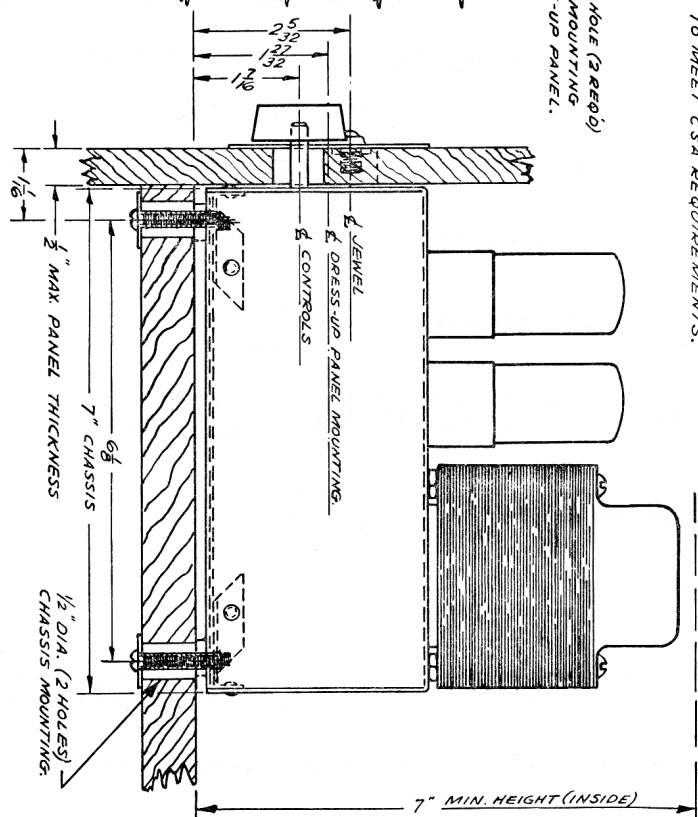


PANEL
CHASSIS

3/4" DIA. (5 HOLES)
FOR CONTROLS
AND JEWEL.

1/2" DIA HOLE (2 REQ'D)
FOR MOUNTING
DRESS-UP PANEL.

IF THIS UNIT IS TO BE INSTALLED IN A TOTALLY
ENCLOSED COMPARTMENT, THE VOLUME OF THE
COMPARTMENT MUST BE AT LEAST 3 CU. FT.
TO MEET CSA REQUIREMENTS.



J-3439

SPECIFICATIONS

Frequency Range	30 to 15000 cycles per second
Output — undistorted	10 Watts
— maximum	15 Watts
Power Consumption	62 Watts

CHASSIS INSTALLATION

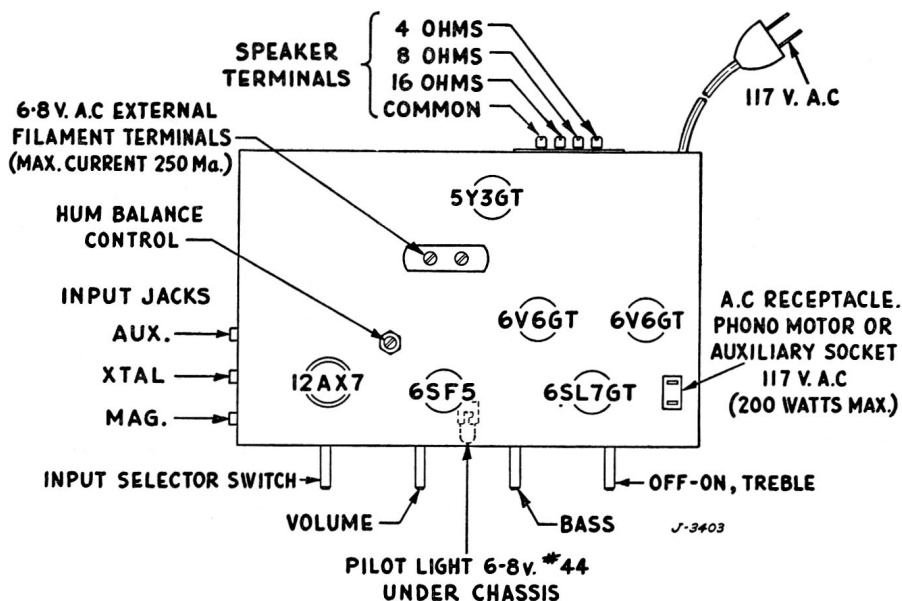
The amplifier has been designed with a removable front panel, to permit its installation in custom cabinets, bookcases, wall panels, etc., and still maintain the usefulness of the control panel. The drawing showing the mounting of the amplifier will assist in the proper location of the chassis, in relationship to the panel being used, to provide adequate shaft protrusion for knobs. It is important that the amplifier be located to insure proper ventilation, as the tubes and power transformer give off considerable heat which should be dissipated to insure normal life of the component parts used in the chassis.

The Chassis must be mounted on the base plate supplied to meet CSA requirements — but the rubber feet may be removed and replaced by 6-32 screws to facilitate mounting of the chassis on a shelf.

NOTE: If the chassis is to be installed in a totally enclosed compartment, compartment MUST BE AT LEAST 3 CU. FT. to meet CSA requirements.

WARNING — POWER SUPPLY

This amplifier is intended to be operated only on the power supply specified on front page. Before connecting make sure that the voltage and frequency shown on the serials name plate correspond to those of your power company.



INPUT JACKS

MAG. — For low or high level magnetic type phono pickup cartridge or other equipment using a magnetic unit as a voltage producing source. (This input is fed into preamp.)

XTAL. — For crystal type phono pickup cartridge or other equipment using a crystal unit as a voltage producing source.

AUX. — To permit the connection of a radio tuner, TV set, etc. for improved audio reproduction.

NOTE: Any coupling to this jack must be of the capacitive type.

INPUT SELECTOR SWITCH

MAG. No. 1 — Input equalized for G.E. or any low level output magnetic pickup.

MAG. No. 2 — Input equalized for Pickering, Clarkstan or any high level output magnetic pickup.

CRYSTAL — For changers using a crystal cartridge or other equipment using a crystal unit as a voltage producing source.

TUNER — For use of the amplifier in conjunction with a Tuner or TV set for Hi-fi audio reproduction.

VOLUME CONTROL

The volume control on this unit operates in the normal manner to control volume. Turn to the right to increase and left to decrease loudness.

TONE CONTROLS

By using the dual tone controls the high and low tones can be increased to suit your listening pleasure. To bring out the full richness of the bass instruments turn the bass control to the 4+ position. For the full brilliance of the cymbals and for overtones of all instruments, turn the treble control to the 4+ position. In the normal or centre positions, that is with the Bass and Tone Controls set at zero, the frequency response of the amplifier is similar to that of a radio receiver with its conventional type of tone control set in normal position.

If the Bass or Treble frequencies are too accentuated at normal or above normal setting (+ side setting) of the controls either can be reduced by turning the controls towards the (4 —) left position.

Proper adjustment of the controls for the most pleasing performances with various types of recordings or programs will be found by experiment.

OFF-ON AC SWITCH

The AC OFF-ON Switch is located on the rear of the treble tone control. Turn this control from its extreme counterclockwise position to the right (→) to turn the receiver on. The Jewel on the panel will light up when the set is turned on.

OTHER FEATURES

Included on this amplifier are:

- (a) A 6.3V AC source (terminals on top of chassis) which may be utilized to connect an additional pilot light, etc., providing that the maximum current load of the connected part does not exceed 250 Milliampères.
- (b) An AC receptacle (on top of chassis), switched on or off by AC switch on treble tone control, has been added to provide a switched source of 117V AC voltage for use with tuners, changers, etc., the power requirements of which do not exceed 200 watts maximum.
- (c) A Hum-Balancer control (on top of chassis). It may be found necessary to adjust the hum-balancer for minimum hum reproduction when the 12AX7 tube is replaced. Set the Bass and Treble tone controls in their extreme right hand positions (positions of maximum boost), make sure that Input Selector Switch is turned to extreme counterclockwise position, turn volume control full on and adjust the hum balancer for minimum hum level.
- (d) Speaker terminals (on rear of chassis) for 4, 8 or 16 ohm. output impedance, to permit the amplifier to be used with speakers varying from conventional standard single type to coaxial or multiple speakers, with crossover networks to provide proper balance of treble and bass frequencies.

SERVICE REPLACEMENT PARTS LIST

When writing for service information or parts please quote model and serial number.

A-2660.....Rubber Feet with Mounting Screws
G-528-1.....Single Electrolytic (25 ufd at 25V).
G-591.....Dual Electrolytic (15 & 15 ufd at
450V)
G-503.....Triple Electrolytic (40 & 20 ufd at
450V) (25 ufd at 50V)
K-771A.....Pilot Lamp 6.8 V. .25 amp. No. 44
K-923.....AC Outlet
K-875-1.....Input Jack
K-1602.....Jewel
LK-537-1.....Power Transformer 25 cycle
LK-538-1.....Output Transformer
N-356-2.....Knob
Q-819-1.....Input Selector Switch
R-371-2.....Volume Control
R-375-1.....Bass Tone Control
R-376-1.....Treble Tone Control and AC Off-On
Switch
R-372.....Hum Balancer Control