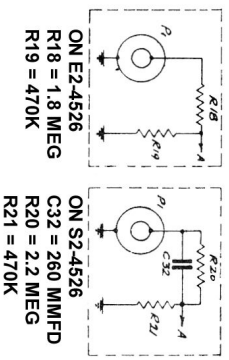


NOTE: ALL MEASUREMENTS TAKEN WITH 20,000 OHM / VOLT VOLTMETER.
 NOTE: SWITCH S1 IS SHOWN IN PHONO POSITION. EXTREME COUNTER-CLOCKWISE POSITION.
 *C8 = 1700 MMFD 5% FOR E1, E2, E3, E4.
 C8 = 2700 MMFD 5% FOR S1, S2, S3.
 C8 = 2200 MMFD 5% FOR L1, L2, L3.

WINDING POLARITY
 "S" DESIGNATES START OF WINDING
 "F" DESIGNATES FINISH OF WINDING



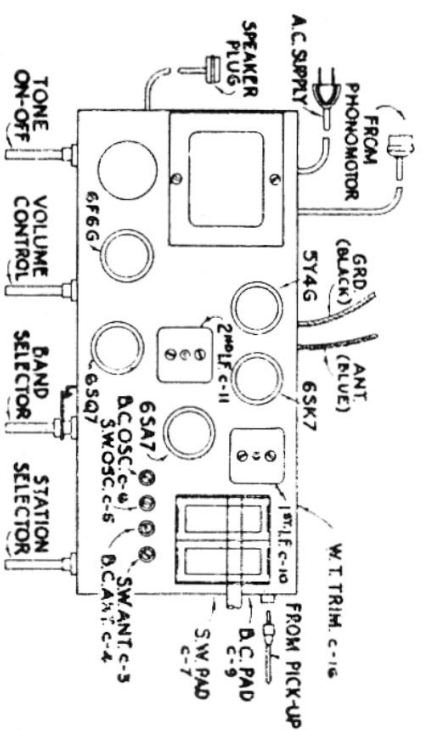
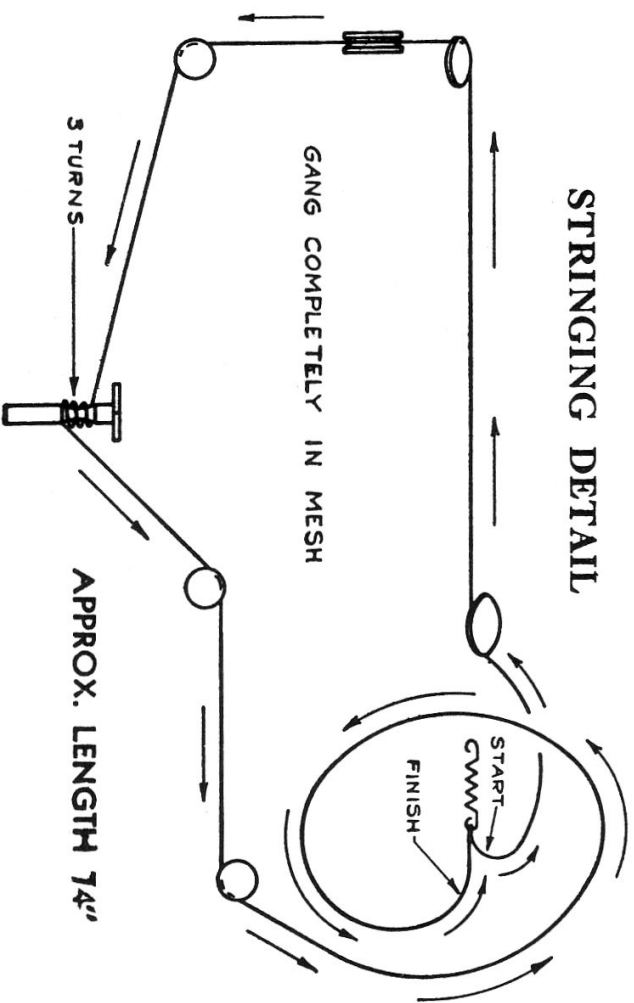
Serenader 506, 508 Viking 46-61, 46-71, 46-91

SERENADER	VIKING	CHASSIS
506	46-61	2-4526
506	46-61	2-4526Z
508	46-91	3-4526
508	46-91	3-4526Z
	46-71	4-4526
	46-71	4-4526Z

Dictator 625M, 635MC, 645ETC, 655CC Lindsay 83A, 110, 111, 233

DICTIONATOR	CHASSIS
625M	D2-4526Z
635MC	D2-4526Z
645ETC	D2-4526Z
655CC	D4-4526Z
LINDSAY	
83A	L1-4526Z
110	L2-4526Z
111	L2-4526Z
233	L4-4526Z

STRINGING DETAIL



TUBE LAYOUT CHART

ALIGNMENT—PROCEED IN SEQUENCE LISTED.

SERENADER 506 & 508 VIKING 46-61, 46-71, 46-91

SERENADER	VIKING	CHASSIS
506	46-61	2-4526
506	46-61	2-4526Z
508	46-91	3-4526
508	46-91	3-4526Z
	46-71	4-4526
	46-71	4-4526Z

Dictator 625M, 635MC

645ETC, 655CC

Lindsay 83A, 110, 111 233

Band	Band Switch Setting	Dummy Antenna	Connect To	Radio Dial Setting	Generator Frequency	Trimmer Adjusted	Adjustment	Note
2nd I.F.	B.C.	.05 Blocking Condenser	Grid of 6SK7	1650 K.C.	455 K.C.	C-11	Maximum Output	
1st I.F.	B.C.	.05 Blocking Condenser	Grid of 6SA7 Converter	1650 K.C.	455 K.C.	C-10	Maximum Output	
455 K.C.	B.C.	200 mmfd.	Antenna	1650 K.C.	455 K.C.	C-16	Minimum Output	
1460 K.C.	B.C.	200 mmfd.	Antenna	1460 K.C.	1460 K.C.	C-6	Maximum Output	
600 K.C.	B.C.	200 mmfd.	Antenna	600 K.C.	600 K.C.	C-9	Maximum Output	Rock Gang Slightly
16 M.C.	S.W.	400 ohm	Antenna	16 M.C.	16 M.C.	G-5	Maximum Output	
9 M.C.	S.W.	400 ohm	Antenna	9 M.C.	9 M.C.	G-7	Maximum Output	

SENSITIVITIES.

Sensitivity in microvolts for 500 milliwatts output (voice coil impedance 3.2 ohms) carrier modulated 30% at 400 cycles

1st I.F. Grid	5200	455 K.C.	1460 K.C.	900 K.C.	600 K.C.	16 M.C.	10 M.C.	6 M.C.
Converter Grid	88	90	90	90	90	92	92	94
Antenna	—	30	25	20	40	45	60	—