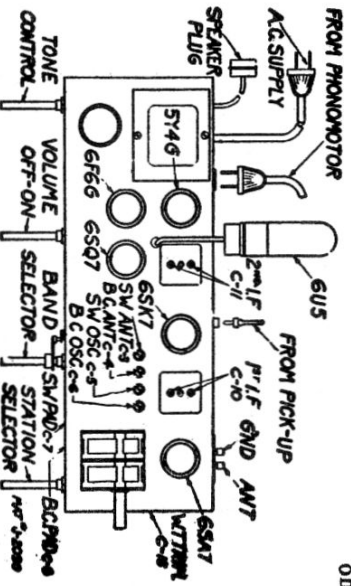


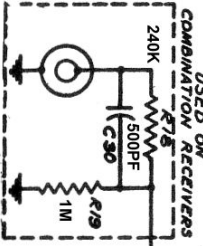
TUBE LAYOUT CHART



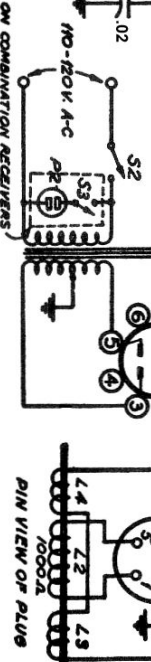
- ERRATA**
- R-18 changed to 100,000 ohm \pm 20% $\frac{1}{4}$ W.
 - R-19 changed to 270,000 ohm \pm 10% $\frac{1}{4}$ W.
 - C-30 deleted.

NOTE:
All measurements taken with 60,000 ohm/volt potentiometer. Switch S1 is shown in Phono position - airframe counter - black - white.

WINDING POLARITY
"S" DESIGNATES START OF WINDING
"F" DESIGNATES FINISH OF WINDING



WEBSTER MODEL 50 RECORD CHANGER



Electrohome

Airline L 319

(LCC62-417Z)

Baycrest B 319

(DCC62-417Z)

Electrohome

Airline L 319

(LCC62-417Z)

Baycrest B 319

(DCC62-417Z)

SENSITIVITIES

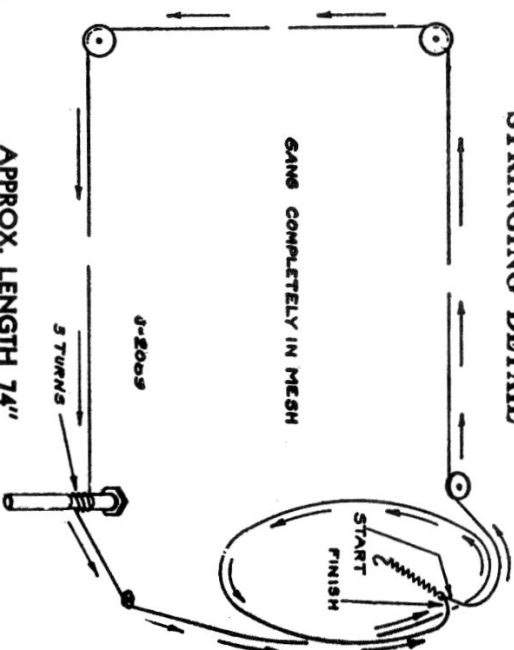
Sensitivity in microvolts for 500 milliwatts output (voice coil impedance 3.2 ohms) carrier modulated 30% at 400 cycles.

1st I.F. Grid	5000	455 K.C.	1460 K.C.	900 K.C.	600 K.C.	16 M.C.	10 M.C.	6 M.C.	—
Converter Grid	100	140	140	140	140	50	60	80	—
Antenna	—	16	16	16	12	16	20	24	—

ALIGNMENT—PROCEED IN SEQUENCE LISTED.

Band	Band Switch Setting	Dummy Antenna	Connect Generator To	Radio Dial Setting	Generator Frequency	Trimmer Adjusted	Adjustment	Note
2nd I.F.	B.C.	Blocking Condenser .05 mfd.	Grid of 6SK7	1660 K.C.	445 K.C.	C-11	Maximum Output	
1st I.F.	B.C.	Blocking Condenser .05 mfd.	Grid of 6SA7 Converter	1660 K.C.	445 K.C.	C-10	Maximum Output	
445 K.C.	B.C.	300 mmfd.	Antenna	1660 K.C.	445 K.C.	C-15	Minimum Output	
1460 K.C.	B.C.	300 mmfd.	Antenna	1460 K.C.	1460 K.C.	C-5	Maximum Output	
900 K.C.	B.C.	300 mmfd.	Antenna	900 K.C.	900 K.C.	C-9	Maximum Output	Rock Gang Slightly
16 M.C.	S.W.	400 ohm	Antenna	16 M.C.	16 M.C.	C-3	Maximum Output	
6 M.C.	S.W.	400 ohm	Antenna	6 M.C.	6 M.C.	C-7	Maximum Output	

STRINGING DETAIL



ALIGNMENT AND CALIBRATION

These receivers are carefully aligned and calibrated at the factory with precision instruments. If realignment is necessary, the following equipment is required:

(1) A signal generator to supply with accuracy the frequencies:

- (a) 455 K.C., (b) 1460 K.C., (c) 600 K.C.
- (d) 16 M.C., (e) 6 M.C.

(2) A dependable Output meter.

Note 1—When aligning oscillator section at high frequencies, care should be taken that the receiver is not adjusted to an image frequency in place of the fundamental. At 16 M.C., fundamental will be obtained at minimum trimmer capacity.

Note 2—When aligning antenna trimmer at high frequencies, rock gang condenser back and forth to obtain maximum peak.