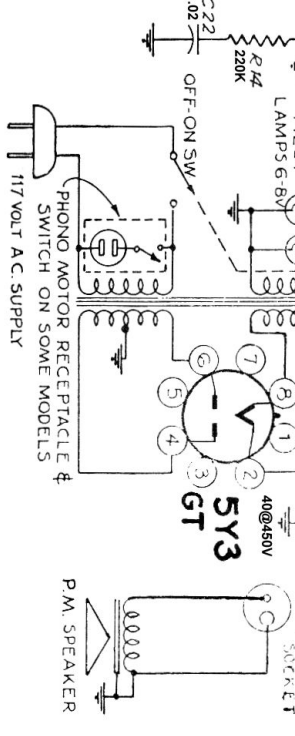
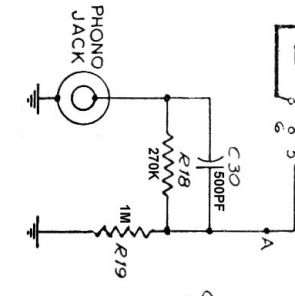
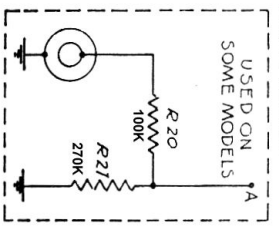


WINDING POLARITY
 "S" DESIGNATES START OF WINDING
 "F" DESIGNATES FINISH OF WINDING



Electrohome

Airline

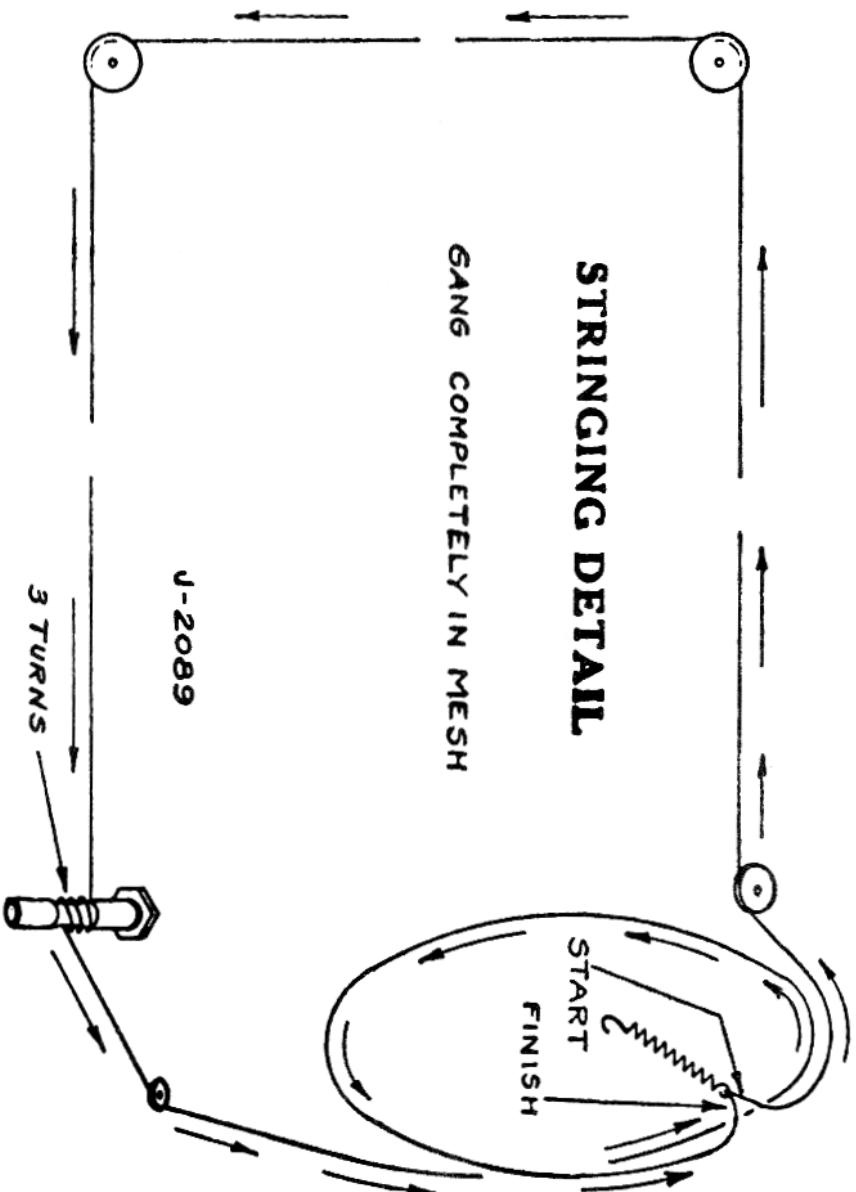
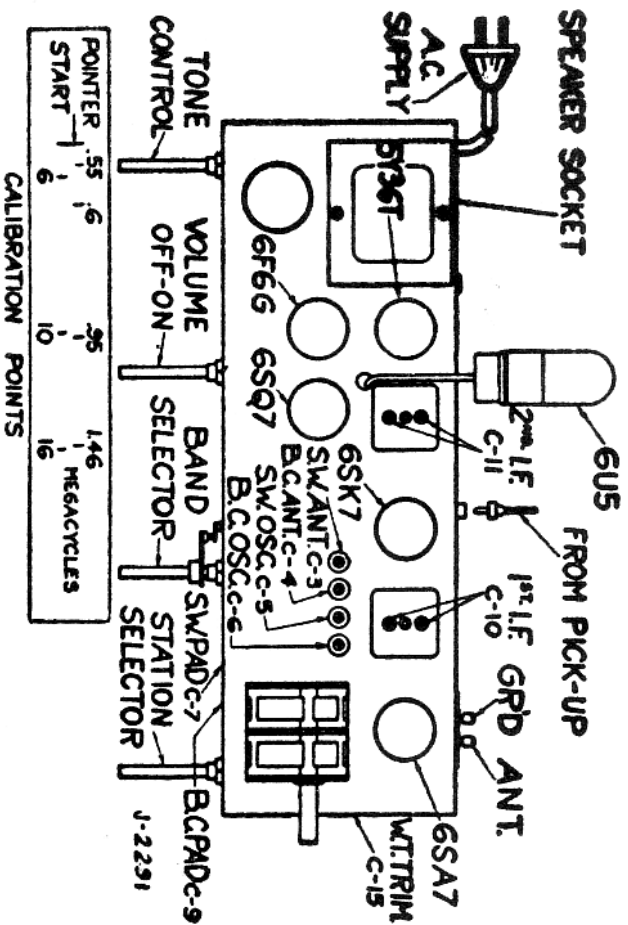
- L-108A & L-319A & L-379
- (LC62-418, 428Z LCC62-418Z LCR62-418Z)

Baycrest

- B-108A & B-319A & B-379
- (DC62-418Z DCC62-418Z DCR62-418Z)

All voltages measured to chassis with 20,000 ohm per volt meter

Band selector switch shown in Phono position (extreme counter clockwise). Numeral indicates wafer back from front chassis skirt and letter designates front or rear of indicated wafer.



Standard Broadcast 535 Kc. - 1650 Kc.
 Short Wave Range5.7Mc. - 17.5Mc.
 Intermediate Frequency 455 Kc.
 Power Consumption 68 Watts
 Undistorted Output 2.0 Watts
 Maximum Power Output 3.2 Watts

NOMINAL SENSITIVITY IN MICROVOLTS					
FOR 500 MILLIWATTS OUTPUT					
CARRIER MODULATED 30% AT 400 C.P.S.					
SIGNAL APPLIED AT	SERIES DUMMY	FREQ	455 KC	1000 KC	10 MC
ANTENNA	200 μ F	12000		20	25
ANTENNA	400 Ω				
6SA7 MIXER GRID	.05 μ F	140		200	140
6SK7 I.F. GRID	.05 μ F	5600			