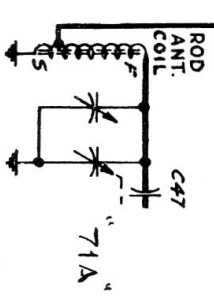


* FASHION LOOP OF SEVERAL TURNS OF WIRE AND RADIATE SIGNAL INTO LOOP OF RECEIVER, ADJUST FOR MAXIMUM OUTPUT. FOR STEPS 4 AND 5, LOOP ON CABINET MUST BE CONNECTED OR DUPLICATED.

ALL VOLTAGES ± 10% MEASURED TO B- WITH 20,000 OHM/VOLT METER, 117 VOLT, 60 CYCLE LINE AND ZERO SIGNAL INPUT. PHONO-RADIO SWITCH SHOWN IN PHONO (COUNTERCLOCKWISE) POSITION.



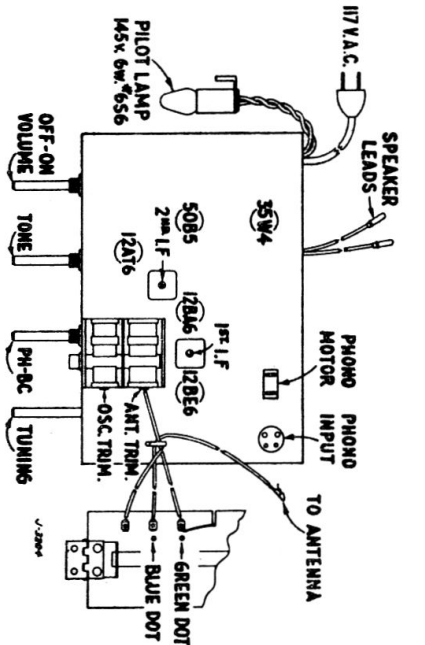
COMPONENT VALUES

RESISTORS: HALF WATT UNLESS OTHERWISE SPECIFIED, 20% TOLERANCE UNLESS OTHERWISE SPECIFIED.
 K = 1000 OHMS.
 M = 1000,000 OHMS.
 CONDENSERS: T = TUBULAR, FOLLOWED BY CAP. IN MFD. AND D.C.W.V.
 E = ELECTROLYTIC, FOLLOWED BY CAP. IN MFD. AND D.C.W.V.
 C = CERAMIC, FOLLOWED BY CAP. IN MMFD, f TOL. IF CRITICAL.
 M = MICA, FOLLOWED BY CAP. IN MMFD. AND TOL. IF CRITICAL.

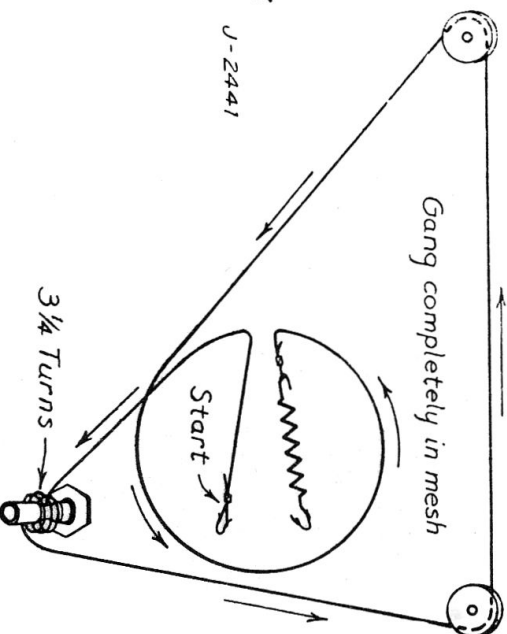
ALIGNMENT AND SENSITIVITY

SIGNAL GENERATOR MODULATED 30% AT 400 CY.

STEP	APPLY SIGNAL AT KC.	THRU SERIES TO DUMMY	SET GANG AT	ADJUST FOR MAX. OUTPUT FOR 50 MILLIWATTS OUTPUT.	NOMINAL SENSITIVITY
1	455	12BA6 #1 P/M	.05	1600	1600
2	455	12BE6 #1 P/M	.05	45	45
3	1460	#7 P/M	.05	—	—
4	1460	ANT.	*	100	100
5	600	ANT.	*	160	160



CHASSIS LAYOUT CHART



Electrohome 71 & 71A AM Radio/Phonograph

STRINGING DETAIL