

SPECIAL CAPACITORS SUCH AS TEMPERATURE COMPENSATING TYPES ARE IDENTIFIED BY A
 eg. OF = OIL FILLED
 M = MICA
 NP = NON POLARIZED
 TEMP COEFF. (NPO, N-P, -)

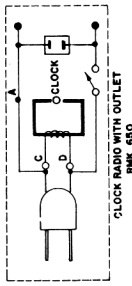
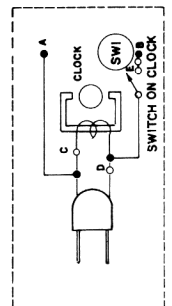
SIGNAL GENERATOR MODULATED 30% AT 400 CPS.

STEP	APPLY SIGNAL TO DUMMY	ALIGNMENT & SENSITIVITY		NOM. SENS. FOR 50mV OUTPUT AT DIODE LEAD
		THROUGH SERIES	ADJUST FOR MAX OUTPUT	
1	485 FN107	.05 u/d	MAX. "C"	1700 uV
2	485 FN107	.05 u/d	MAX. "C"	48 uV
3	1460 -	RADIATE	1460 KCS	350 uV/M
4	600 -	"	600 KCS	225 uV/M
5	535 -	"	MAX. "C"	"
6	1650 -	"	MIN. "C"	"

FASHION LOOP CONSISTING OF SEVERAL TURNS OF WIRE AND RADIATE SIGNAL, FROM GENERATOR TO LOOP OF RECEIVER.

LEGEND
 RESISTORS
 HALF WATT UNLESS OTHERWISE NOTED.
 20% TOLERANCE " "
 K=1,000 OHMS
 M=1,000,000 OHMS

CAPACITORS
 TUBULAR CAPACITY IN u/F, AND D.C.W.V.
 CURVED LINE OUTSIDE FOIL
 ELECTROLYTIC CAPACITY IN u/F, AND D.C.W.V.
 CERAMIC, MICA OR OTHER TYPES WITH NO CURVED LINE OUTSIDE OF GROUPING
 CAPACITY IN u/F, TOLERANCE IF CRITICAL AND D.C.W.V.



TUBE LAYOUT (5PR404, 5PC404)

