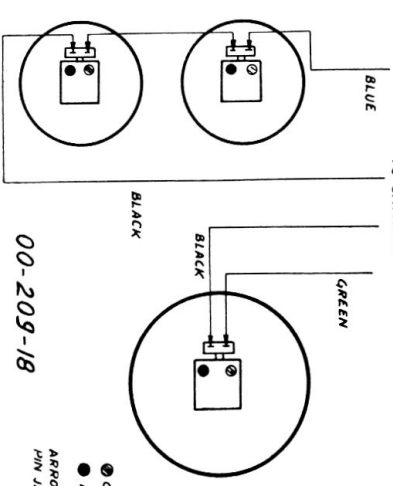
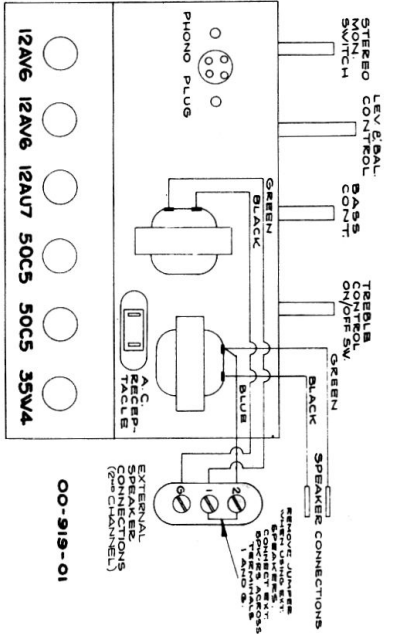


CONDENSERS: T, TUBULAR, FOLLOWED BY CAP IN MPD AND DCV;  
 E, ELECTROLYTIC; C, CERAMIC; FOLLOWED BY CAPACITY IN MPD AND TOLERANCE IF CRITICAL.

RESISTORS: HALF WATT, UNLESS OTHERWISE NOTED.  
 20% TOLERANCE, UNLESS OTHERWISE NOTED.  
 M = 1,000,000 OHMS.  
 K = 1,000 OHMS.

03-160019-01 ..... BSR UA8 Changer Assembly 60 Cycle Wired  
 For Stereo With TC8S Stereo Cartridge

Electrohome 4B-35S



● GREEN DOT  
 ● BLACK DOT  
 ARROWS INDICATE  
 PIN JACK TIPS

00-209-18

00-525-01