

DIAL-CORD INSTALLATION

When replacement of the dial cord in a control unit is necessary, refer to the illustration (figure 1, 2, 3, or 4) which most nearly resembles the control unit, and install the dial cord as shown. Figures 1 through 4 show typical control units. Pass the dial cord under the center tab of the pointer, and wrap 1 turn around each outside tab, and 3 1/2 turns around the tuning shaft. The length of the dial cord (figure 5) for each control unit is given in the following list

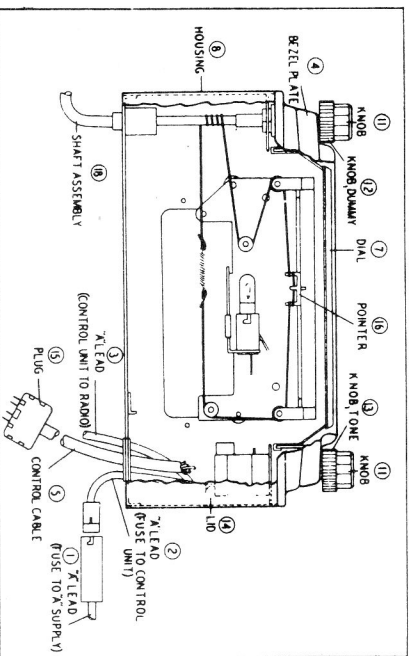


Figure 1. Control Unit C600M (Under Dash), Showing Location of Parts and Dial-Cord Installation Details

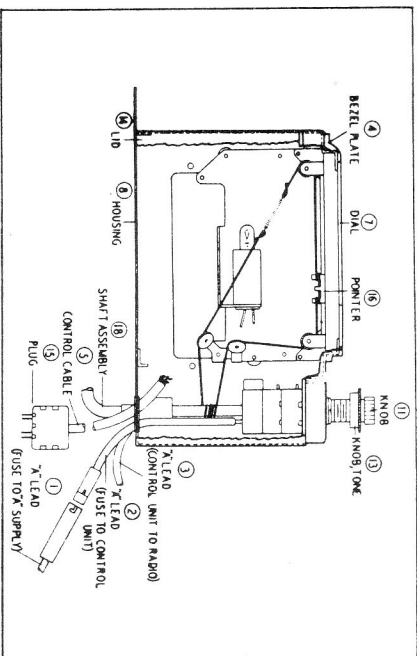


Figure 2 Control Unit C623M (Chrysler), Showing Location of Parts and Dial-Cord Installation Details

Car	Control-Unit Model No	Dial-Cord Length
Buick (Special)	C720A, M	19 5/8"
Buick (Super)	C620A, M	18 5/8"
Chevrolet	C622A, M	19 5/8"
Chrysler	C623A, M	15 7/8"
Ford	C627A, M	21 3/8"
Nash	C631A, M	19"
Oldsmobile	C632A, M	18 1/8"
Pontiac	C634A, M	18 1/8"
Studebaker	C635A, M	20 3/8"
Under Dash	C600A, M	16 1/8"

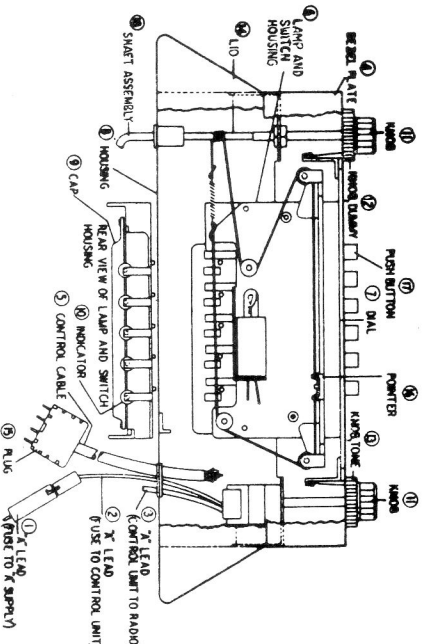


Figure 3 Control Unit C627M (Ford), Showing Location of Parts and Dial-Cord Installation Details

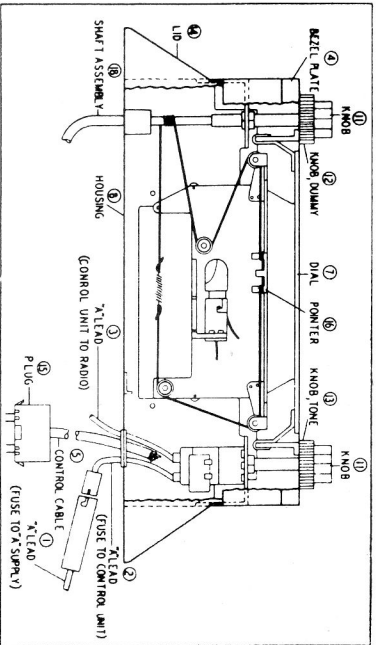


Figure 4 Control Unit C627A (Ford), Showing Location of Parts and Dial-Cord Installation Details

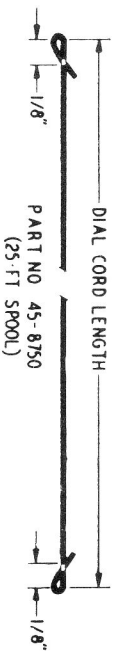


Figure 5 Dial-Cord Dimensional Drawing

DIAL CORD INSTALLATION FOR CR MODELS

FOR CR MODELS SEE SHEETS 178-186

TP-5282