

# Plug-In Ballast Resistor Data

Plug-in ballast resistors which are numbered in accordance with RMA standards, are coded as follows:

**First:** A prefix *K*, *L*, or *M*, where

*K* denotes #40 6.3 v. 0.15 a. pilot lamp,

*L* denotes #46 6.3 v. 0.25 a. pilot lamp,

*M* denotes #51 6.3 v. 0.2 a. pilot lamp.

A letter *B* prefixing *K*, *L*, or *M*, indicates ballast action on pilot light section.

A letter *X* following *K*, *L*, or *M*, denotes a 4-prong base type mounting.

**Second:** A number, which indicates the voltage drop across the entire resistor unit, including pilot lamp section, at the standard current of 0.3 ampere.

**Third:** A letter A, B, C, D . . . etc., representing

the circuit arrangement as designated by the lettered diagrams shown below.

**Fourth:** A suffix *G*, *MG*, or *J*, where

*G* indicates a glass type envelope,

*MG* indicates a metal-glass type envelope,

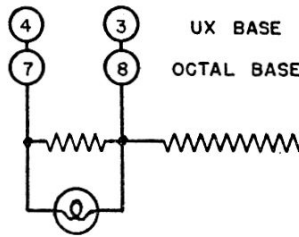
*J* indicates a direct zero resistance connection between #3 and #4, or #6 and #7, or #5 and #3 prongs of the base.

Voltage drop values and tube complements most commonly used with plug-in ballast resistors, are as follows:

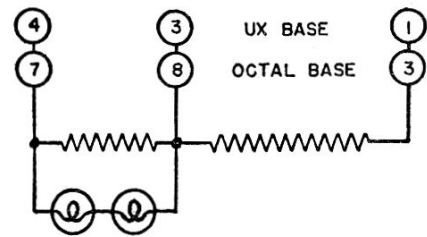
80 V. drop for 2-6.3 V., and 1-25 V., tubes,  
 55 V. drop for 2-6.3 V., and 2-25 V., tubes,  
 49 V. drop for 3-6.3 V., and 2-25 V., tubes,  
 42 V. drop for 4-6.3 V., and 2-25 V., tubes,  
 36 V. drop for 5-6.3 V., and 2-25 V., tubes,  
 23 V. drop for 3-6.3 V., and 3-25 V., tubes.



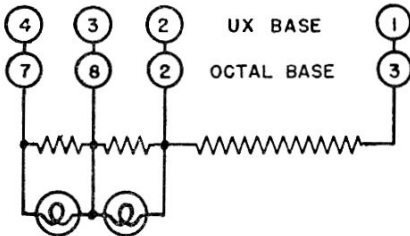
A



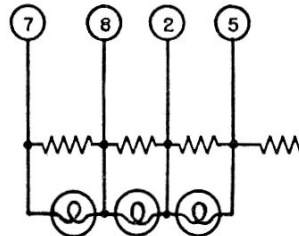
B



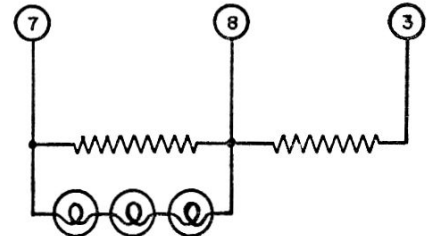
C



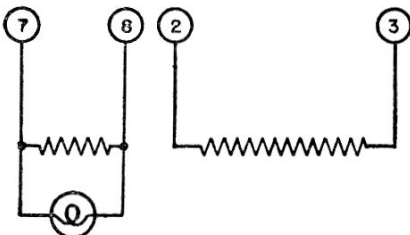
D



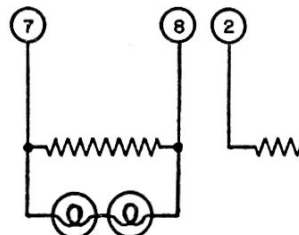
E



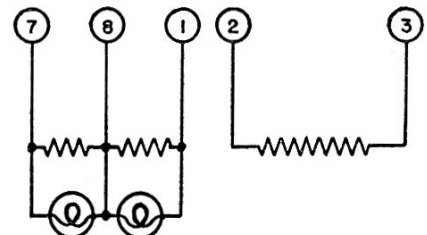
E1



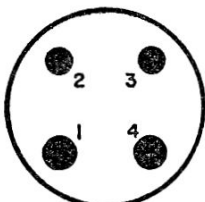
F



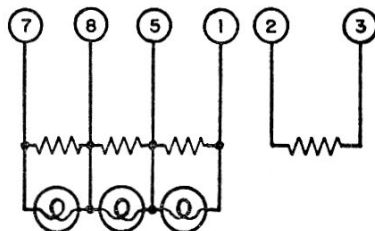
G



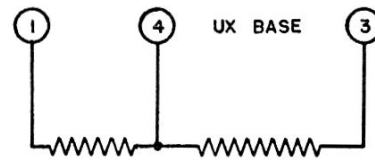
H



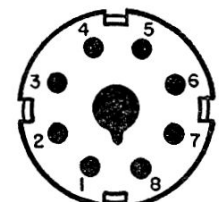
BOTTOM VIEW  
OF UX SOCKET



J



R



BOTTOM VIEW  
OF OCTAL SOCKET