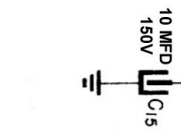
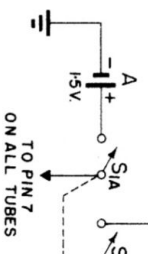
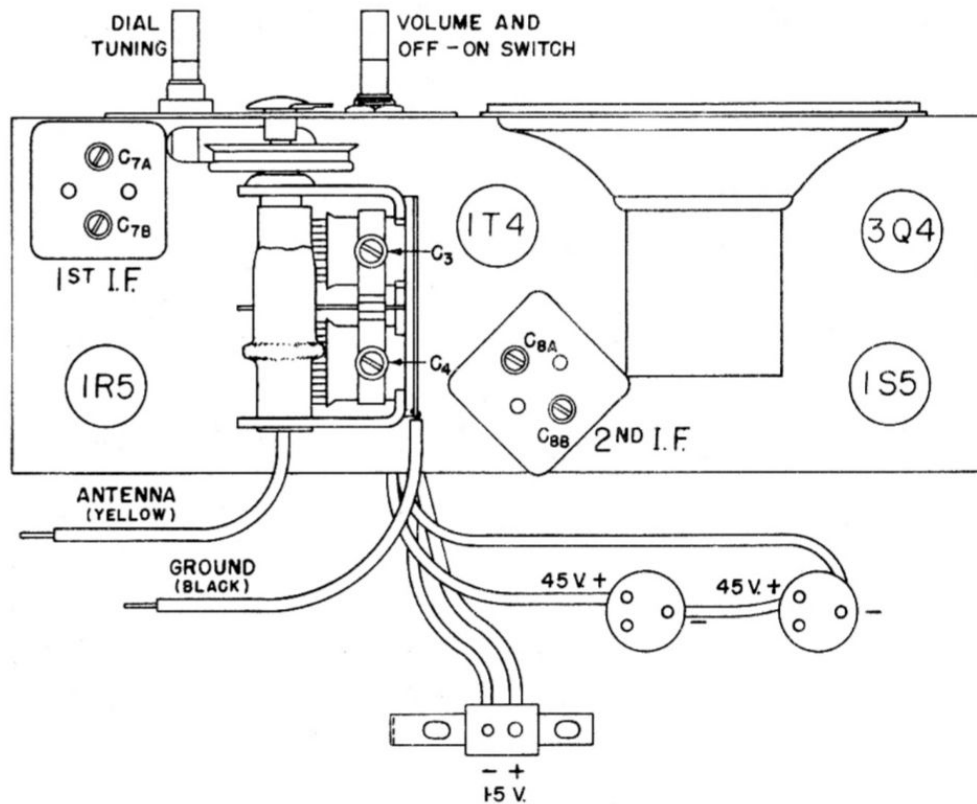


ADDISON 19





Output Meter - Connect Meter leads to the voice coil terminals of the speaker and turn the receiver volume control to maximum.

Test Oscillator or Signal Generator - For all alignment operations connect the ground side of the test apparatus to the receiver chassis, and keep the signal input to the circuit being tuned as low as possible to avoid A.V.C. action.

CHART OF ALIGNMENT PROCEDURE

Steps in Alignment	Test Oscillator			Receiver Dial Setting	Circuit to Adjust	Symbol on Schematic
	Connection to Receiver	Dummy Antenna	Frequency Setting			
1.	Control Grid IT4 Pin No.6	.05 MFD	456 Kc.	No Signal 540-700 Kc.	2nd I.F. Transformer	C8A C8B
2.	Control Grid IR5 Pin No.6	.05 MFD	456 Kc.	No Signal 540-700 Kc.	1st I.F. Transformer	C7A C7B
3.	Antenna Lead (Yellow)	200 MMF	1500 Kc.	1500 Kc.	Oscillator Trimmer	C3
4.	Antenna Lead (Yellow)	200 MMF	1500 Kc.	1500 Kc.	Antenna Trimmer	C4